

A NEW SPECIES OF *CORTODERA* MULSANT, 1863 FROM TURKEY (COLEOPTERA: CERAMBYCIDAE)

Hüseyin Özdikmen* and Hüseyin Özbek*

* Gazi Üniversitesi, Fen-Edebiyat Fakültesi, Biyoloji Bölümü, 06500 Ankara / TÜRKİYE. E-mail: ozdikmen@gazi.edu.tr

[Özdikmen, H. & Özbek, H. 2012. A new species of *Cortodera* Mulsant, 1863 from Turkey (Coleoptera: Cerambycidae). *Munis Entomology & Zoology*, 7 (2): 931-934]

ABSTRACT: The following new taxon is described: *Cortodera aksarayensis* sp. n. from Turkey, close to *C. colchica* Reitter, 1890 and *C. discolor* Fairmaire, 1866. A short key to the identification of these species is proposed.

KEY WORDS: Cerambycidae, Lepturinae, *Cortodera*, new species, Turkey.

During the study of the old collected Cerambycidae specimens, we have identified a male specimen belonging to a new species that collected from Aksaray province in Central Anatolian Region of Turkey, of *Cortodera* Mulsant, 1863 which will be described in this paper.

***Cortodera aksarayensis* sp. n.**

(Fig. 1)

Type serie. Holotype ♂: Turkey, Aksaray prov.: Entry of Nevşehir-Aksaray, 20.V.1997.

Female unknown.

Description:

Body length: 8.5 mm.

Coloration: Maxillary palps, labrum, half of clypeus, the first four antennal segments, elytra, pygidium reddish-brown. The remaining parts of head and antennae, pronotum, scutellum quite black. Front legs except tarsi, apex of femora and claws of middle and hind legs black. The remaining parts of legs reddish-brown. In ventral view, the last three abdominal segment quite reddish-brown and the first two visible segments black only on the basal parts, the remaining parts of them reddish-brown.

Pubescence: Body quite with rather distinct yellowish hairs. Head and pronotum closed with rather long erect hairs. The remaining parts of the body closed semi-recumbent hairs. Scutellum naked.

Punctuation: Head and pronotum with rather dense, distinct punctuation. Elytra with rather regular, deeply punctuate. The punctuation of head and pronotum denser but smaller than that of elytra. Scutellum distinctly punctuate.

Differential diagnosis. The new species is closely related to *C. colchica* that described from Caucasus and *C. discolor* that described from Bozdağ (Turkey: W Anatolia: İzmir) (Özdikmen & Turgut, 2008) (Fig. 2). It is easily distinguished from them by the characters that were stated in the following key.

The original description of *C. colchica* Reitter, 1890

Schläfen hinter den Augen sehr kurz und klein, nach hinten verengt. Schwarz, Flügeldecken braunroth, einfarbig oder mit langem dreieckigen schwarzen Basalfleck an der Naht, bald schwarz, bald schwarz und gelb behaart, die Vorderschienen an der Basis und gewöhnlich auch die vorderen Tarsen gelbbraun. Flügeldecken in beiden Geschlechtern stark verschmälert. Von der sehr ähnlichen *alpina* schon durch die ganz anderen Schläfen sehr verschieden. Kaukasus, Araxesthal.

The original description of *C. discolor* Fairmaire, 1866

CORTODERA DISCOLOR. — Long. 10 mill. — Oblonga, nigra, griseopubescens, capite prothoraceque dissimile ruguloso-punctatis; hoc subgloboso, medio sulcato. elytris tenuiter dense aspero-punctatis, tibiis anticis obscure testaceis, dense pubescentibus»

Var. B. Elytris obscure rufis,

Oblongue, épaisse, convexe, entièrement d'un noir assez brillant, recouvert d'une pubescence grisâtre, soyeuse sur le dessous du corps. Tête presque aussi large que le corselet, couverte comme lui d'une ponctuation fine, très-serrée, rugueuse; un fort sillon transversal au-dessous des antennes, un plus fin entre elles. Antennes atteignant les deux tiers de la longueur du corps; quatrième article beaucoup plus court que le troisième et le cinquième. Corselet presque globuleux, rétréci assez brusquement en avant; au milieu, un sillon bien marqué, très-lisse. Écusson en triangle arrondi, très-finement ponctué. Élytres larges, convexes, légèrement atténuées en arrière après le milieu, brusquement arrondies à l'extrémité, couvertes d'une ponctuation grosse, assez serrée, assez profonde à la base, s'effaçant peu à peu vers l'extrémité. Tibias antérieurs roussâtres, très-pubescents, tarsi d'un roussâtre obscur. Bosz-Dagh.

Identification Key for males

1. Abdomen quite black.....**2**
- . Abdomen mostly reddish-yellow; 3rd antennal segment smaller than 5th segment; Elytra quite brownish-red without black spot in the suture.....
.....***C. aksarayensis* sp. n.**
2. 3rd antennal segment as long as 5th segment; Elytra brownish-red with more or less distinct long triangular black basal spot in the suture, pubescence black.....
.....***C. colchica* Reitter, 1890**
- . 3rd antennal segment as long as 5th segment; Elytra yellowish without black spot in the suture, pubescence grayish-white.....***C. discolor* Fairmaire, 1866**

Etymology. From the type locality “Aksaray” (Turkey).

LITERATURE CITED

Fairmaire, L. 1866. Notice sur les Coléoptères récoltés par M. J. Lédérer sur le Bosz-Dagh (Asie Mineure). Annales de la Société Entomologique de France, 6 (4): 249-280.

Özdikmen, H. & Turgut, S. 2008. A new *Cortodera* species for Turkey (Coleoptera: Cerambycidae: Lepturinae). Munis Entomology & Zoology, 3 (2): 596-605.

Reitter, E. 1890. Uebersicht der mir bekannten *Cartodera*-Arten aus Europa und den angrenzenden Ländern. Wiener Entomologische Zeitung, 9: 243-246.



A



B

Figure 1. *Cortodera aksarayensis* sp. n. (Holotype ♂), A. Dorsal view, B. Ventral view.

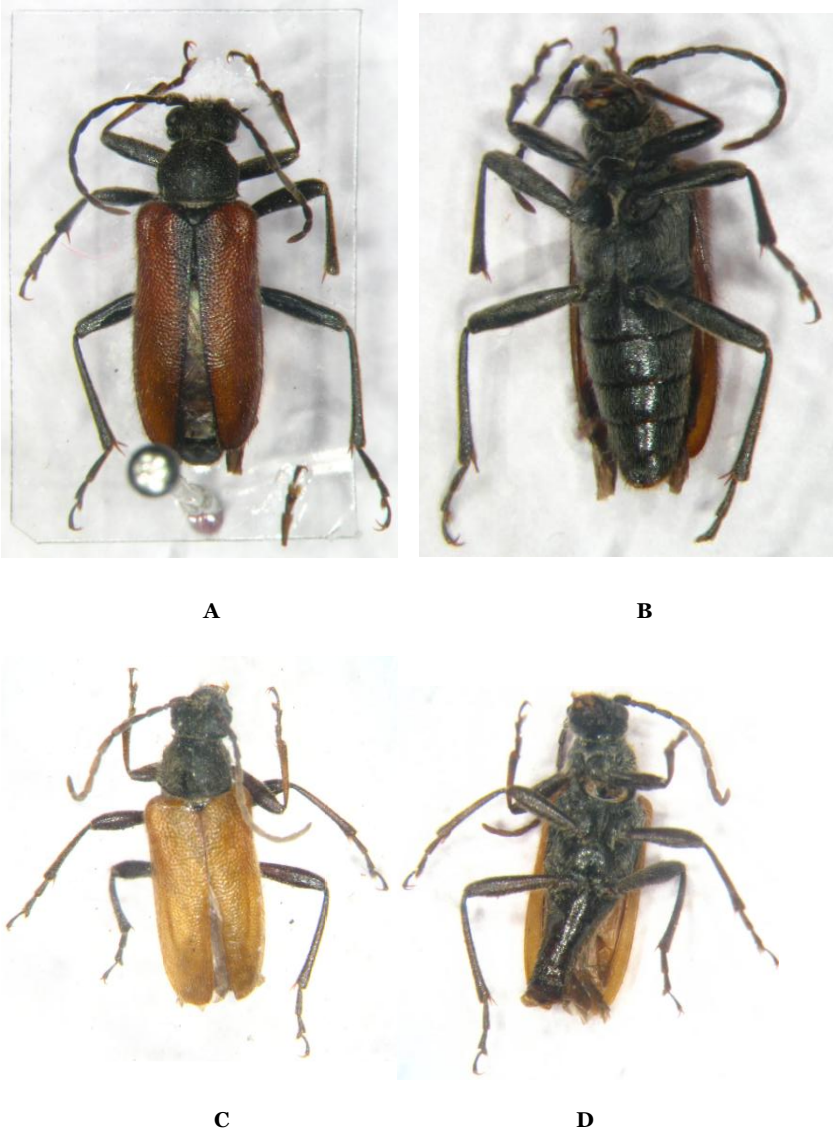


Figure 2. *Cortodera colchica* Reitter, 1890, A. Dorsal view, B. Ventral view; *Cortodera discolor* Fairmaire, 1866, A. Dorsal view, B. Ventral view.