

NEW DATA FOR TURKISH LONGHORNED BEETLES FAUNA FROM SOUTHERN TURKEY (COLEOPTERA: CERAMBYCIDAE)

Semra Turgut * and Hüseyin Özdikmen *

* Gazi Üniversitesi, Fen-Edebiyat Fakültesi, Biyoloji Bölümü, 06500 Ankara / Türkiye. E-mails: semraturgut@gmail.com and ozdikmen@gazi.edu.tr

[Turgut, S. & Özdikmen, H. 2010. New data for Turkish longhorned beetles fauna from Southern Turkey (Coleoptera: Cerambycidae). Munis Entomology & Zoology, 5, suppl.: 859-889]

ABSTRACT: It includes results of an investigation on the longhorned beetles fauna of Gevne Valley and Geyik Mountains (Southern Turkey: Antalya-Konya provinces).

KEY WORDS: Cerambycidae, Coleoptera, Gevne Valley, Geyik Mountains, Turkey.

Research area is Gevne Valley and Geyik Mountains (Geyik Mountain range) in the present work. Gevne Valley that is a deep valley about 25 km in length and 0.5-1 km in width, is in Hadim and Alanya Counties between Konya and Antalya provinces. It is a transition area between Mediterranean and Central Anatolian Regions of Turkey. Altitude of Gevne valley is 1100 m in the base of valley. Then suddenly rise up to 2200 m. A village (Beyreli) and many plateau present in the valley. These are Tosmur, Çayarası, İshaklı and Elikesik plateau. Gevne stream starts at the beginning of the valley and run along a long distance. It merges to Göksu River at the end [Duman et al., 2000].

Geyik Mountain range that creates a border separating Mediterranean Region and Central Anatolian Region of Turkey, includes Geyik Mountain, Ak Mountain, Yıldız Mountain and Şeytan Mountain. Geyik Mountains is a branch of Western Taurus Mountains. Geyik Mountain is in N, NE and E of Gündoğmuş country. Şeytan Mountain is in N of İbradı. Yıldız Mountain is in S of Suğla Lake. Ak Mountain is in NE of Akseki County.

MATERIAL AND METHOD

For the present work, 2288 cerambycid specimens were collected by the authors from various parts of Gevne Valley and Geyik Mountains between March-September in 2006-2008 (Map 1). These specimens were deposited in Gazi University (Ankara, Turkey). The data were evaluated under the titles "Material examined", "Chorotype" and "Remarks" in the text. Chorotype classification was based on Taglianti et al. (1999).

RESULTS

FAMILY CERAMBYCIDAE

SUBFAMILY PRIONINAE

TRIBE ERGATINI

Callergates gaillardoti (Chevrolat, 1854)

Material examined: **Antalya prov.**: Çayarası-Alanya Sarımut bridge env., 1114 m, N 36 38 E 32 23, 24.VIII.2006, 1 specimen; **Konya prov.**: Beyreli, 1467 m, N 36 50 E 32 23, 17.VII.2006, 1 specimen.

Chorotype: E-Mediterranean.

Remarks: The species is distributed only in Mediterranean Region for Turkey. It is the first record to Konya province and thereby Central Anatolian Region of Turkey.

TRIBE AEGOSOMATINI

Aegosoma scabricorne (Scopoli, 1763)

Material examined: **Antalya prov.:** Taşkent-Alanya road: Exit of Karapınar, 1210 m, N 36 35 E 32 22, 18-20.VII.2006, 1 specimen; **Konya prov.:** Taşkent-Alanya road: 80 km to Alanya, 1482 m, N 36 46 E 32 27, 19-28.VII.2006, 2 specimens; Taşkent: Afşar town: Kayadibi Akçapınar district, 1680 m, N 37 28 E 31 38, 23.VII.2006, 1 specimen.

Chorotype: Turano-European.

Remarks: The species is distributed rather widely in Turkey.

TRIBE PRIONINI

Prionus coriarius (Linnaeus, 1758)

Material examined: **Antalya prov.:** Akseki: Yarpuz env., 1615 m, N 37 13 E 31 55, 10.VII.2007, 4 specimens; **Konya prov.:** Çayarası-Alanya: Kozarası district, 1133 m, N 36 39 E 32 25, 18.VII.2006, 1 specimen.

Chorotype: W-Palaeartic

Remarks: The species is distributed rather widely in Turkey. It is the first record to Konya province.

Mesoprionus besikanus (Fairmaire, 1855)

Material examined: **Antalya prov.:** Alanya: Sarımut env., 1113 m, N 36 37 E 32 23, 09.VII.2007, 3 specimens; **Konya prov.:** Taşkent: Afşar town: Kayadibi Akçapınar district, 1680 m, N 37 28 E 31 38, 23.VII.2006, 1 specimen;

Chorotype: Turano-Mediterranean (Balkano-Anatolian).

Remarks: The species is distributed mostly in Western half of Turkey.

SUBFAMILY LEPTURINAE

TRIBE RHAGIINI

Dinoptera collaris (Linnaeus, 1758)

Material examined: **Antalya prov.:** Alanya: Karapınar village, 1154 m, N 36 36 E 32 25, 14.VI.2007, 1 specimen; Akseki: Bademlibeli-Tekebeli, 1180 m, N 37 15 E 31 44, 10.VI.2008, 1 specimen; **Konya prov.:** Derebucak: Tekebeli pass env., 1224 m, N 37 14 E 31 45, 12.VI.2007, 6 specimens; Bozkır: Dere town, 1252 m, N 37 10 E 32 09, 13.VI.2007, 1 specimen; Hadim: Beyreli, 1536 m, 36 50 N 32 23 E, 15.VI.2007, 1 specimen.

Chorotype: Sibero-European.

Remarks: The species is distributed rather widely in Turkey. It is the first record to Antalya and Konya provinces, and thereby the research area.

Cortodera cirsii Holzschuh, 1975

Material examined: **Konya prov.:** Gencek- Derebucak, 1212 m, N 37 25 E 31 29, 20.V.2008, 8 specimens.

Chorotype: Anatolian.

Remarks: The species is endemic to Turkey. It occurs only in Southern parts of Turkey.

Cortodera colchica Reitter, 1890

Cortodera colchica colchica Reitter, 1890

Material examined: **Konya prov.:** Hadim-Beyreli road 3rd km, 1866 m, N 36 56 E 32 23, 13.VI.2007, 1 specimen.

Chorotype: SW-Asiatic (Anatolo-Caucasian).

Remarks: The species is distributed rather widely in Turkey.

Cortodera differens Pic, 1898

Material examined: **Antalya prov.:** Gevne valley (Karapınar), 1704 m, 36 41 N 32 27 E, 13.V.2007, 1 specimen; **Konya prov.:** Hadim: Korualan town env., 1648 m, N 36 58 E 32 24, 12.VI.2008, 1 specimen.

Chorotype: Turano-Mediterranean (Balkano-Anatolian).

Remarks: The species probably is distributed only in Western half of Turkey. It is the first record to Turkey. This status was published by Özdikmen & Turgut (2008c). In addition to this, *C. steineri* Sama, 1997 that was described from Greece, was regarded by Özdikmen & Turgut (2008c) as a synonym of *C. differens* Pic, 1898.

***Cortodera discolor* Fairmaire, 1866**

Material examined: **Antalya prov.**: Teke pass, 1237 m, N 37 14 E 31 46, 14.V.2006, 2 specimens; Alanya-Taşkent: Exit of Karapınar village, 1100 m, N 36 36 E 32 24, 16.V.2006, 3 specimens; Akseki: Mahmutlu village env., 1054 m, N 36 55 E 31 47, 19.V.2008, 1 specimen; Akseki: Güzelsu village, 1154 m, N 36 53 E 31 50, 09.VI.2008, 7 specimens; **Konya prov.**: Seydişehir: Çavuş village, 1186 m, N 37 37 E 31 55, 13.V.2006, 4 specimens.

Chorotype: Turano-Mediterranean (Balkano-Anatolian).

Remarks: The species is distributed especially in Western half of Turkey. It is the first record to Antalya province.

***Cortodera flavimana* (Waltl, 1838)**

Material examined: **Antalya prov.**: Bademli pass, 1432 m, N 37 22 E 31 43, 14.V.2006, 19 specimens; Teke pass, 1237 m, N 37 14 E 31 46, 14.V.2006, 70 specimens; Alanya-Taşkent: Exit of Karapınar village, 1100 m, N 36 36 E 32 24, 16.V.2006, 26 specimens; Bademli-Bakaran, 1431 m, N 37 22 E 31 43, 19.V.2008, 24 specimens; Alanya: Karapınar village, 1154 m, N 36 36 E 32 25, 14.VI.2007, 5 specimens; **Konya prov.**: Taşkent: Faşikan plateau, 1229 m, N 36 51 E 32 31, 16.V.2006, 99 specimens; Hadim, 1569 m, N 36 58 E 32 26, 14.V.2007, 1 specimen; Hadim-Bozkır road, Yazdamı village env., 1434 m, N 37 07 E 32 17, 14.V.2007, 12 specimens; Bozkır, 1143 m, N 37 11 E 32 14, 15.V.2007, 1 specimen; Bozkır: Sorkun town, 1281 m, N 37 09 E 32 08, 15.V.2007, 100 specimens; İbradı-Derebucak road: 12 km to Derebucak, 1388 m, N 37 28 E 31 37, 12.VI.2007, 1 specimen; Hadim: Beyreli village env., 1322 m, N 36 47 E 32 26, 13.VI.2007, 6 specimens; Bozkır: Yazdamı village env., 1447 m, N 37 07 E 32 17, 21.V.2008, 8 specimens; Bozkır-Hadim road: 22 km to Hadim, 1344 m, N 37 02 E 32 19, 21.V.2008, 1 specimen; Hadim-Beyreli road: Beyreli return env., 1894 m, N 36 55 E 32 24, 21.V.2008, 13 specimens.

Chorotype: Turano-Mediterranean (Balkano-Anatolian).

Remarks: The species is widely distributed in Turkey.

***Cortodera rubripennis* Pic, 1891**

Material examined: **Konya prov.**: Gencek-Derebucak, 1212 m, N 37 25 E 31 29, 20.V.2008, 9 specimens.

Chorotype: Anatolian.

Remarks: The species is endemic to Turkey. It is distributed only in Southern parts of Turkey. It is the first record to Konya province and thereby the research area and Central Anatolian Region of Turkey.

TRIBE LEPTURINI

***Grammoptera merkli* Frivaldsky, 1884**

Material examined: **Antalya prov.**: Akseki: Cemerler village env., 717 m, N 36 57 E 31 45, 16.IV.2007, 1 specimen.

Chorotype: Anatolian.

Remarks: The species is endemic to Turkey. It is distributed only in Southern parts of Turkey.

***Vadonia bitlisiensis* Chevrolat, 1882**

Material examined: **Antalya prov.**: Akseki-Güzelsu, 903 m, N 36 57 E 31 47 E, 11.VI.2007, 4 specimens.

Chorotype: SW-Asiatic (Anatolo-Caucasian).

Remarks: The species is distributed mostly in Eastern half of Turkey. It is the first record to Antalya province and thereby the research area and Mediterranean Region of Turkey.

Vadonia unipunctata* (Fabricius, 1787)**Vadonia unipunctata unipunctata* (Fabricius, 1787)**

Material examined: **Konya prov.:** Seydişehir-Antalya road, 5th km, 1224 m, N 37 22 E 31 52, 10.VI.2007, 5 specimens; Derebucak: Tekebeli pass env., 1224 m, N 37 14 E 31 45, 12.VI.2007, 7 specimens; Bozkır: Yalnızca, 1460 m, N 37 08 E 32 15, 13.VI.2007, 5 specimens; Bozkır: Kozçağaç and Bayboğan villages env., 1439 m, N 37 09 E 32 15, 21.V.2008, 1 specimen.

Chorotype: Turano-European or Turano-Europeo-Mediterranean.

Remarks: The species is widely distributed in Turkey. It is the first record to Konya province.

Pseudovadonia livida* (Fabricius, 1777)**Pseudovadonia livida livida* (Fabricius, 1777)**

Material examined: **Antalya prov.:** Gündoğmuş, 1002 m, N 36 48 E 31 51, 16.V.2007, 2 specimens; Seydişehir-Antalya road: 6-7 km to Akseki, 1274 m, N 37 07 E 31 47, 10.VI.2007, 1 specimen; Akseki: Murtiçi-Güzelsu, 970 m, N 36 54 E 31 49, 11.VI.2007, 2 specimens; Akseki-Güzelsu, 903 m, N 36 57 E 31 47, 11.VI.2007, 49 specimens; Antalya: İbradı, 908 m, N 37 04 E 31 36, 11.VI.2007, 25 specimens; Exit of İbradı 5th km, Gevenli pass env., 1288 m, N 36 09 E 31 32, 11.VI.2007, 144 specimens; Akseki: Irmasan, 1473 m, N 37 06 E 31 48, 12.VI.2007, 2 specimens; Karapınar, 1154 m, N 36 36 E 32 25, 14.VI.2007, 1 specimen; Alanya: Keşbelen plateau, 1750 m, N 36 37 E 32 22, 14.VI.2007, 1 specimen; Alanya: Gökbel plateau, 1758 m, N 36 41 E 32 19, 14.VI.2007, 3 specimens; Alanya: Entry of Gökbel plateau, 1494 m, N 36 39 E 32 22, 09.VII.2007, 1 specimen; Akseki: Mahmutlu village env., 1054 m, N 36 55 E 31 47, 19.V.2008, 3 specimens; Akseki: Güçlüköy env., 473 m, N 36 47 E 31 45, 19.V.2008, 1 specimen; Akseki: Murtiçi-Güzelsu, 977 m, N 36 54 E 31 49, 09.VI.2008, 1 specimen; Akseki: Güzelsu village, 1154 m, N 36 53 E 31 50, 09.VI.2008, 1 specimen; İbradı, 1008 m, N 37 05 E 31 36, 09.VI.2008, 4 specimens; İbradı: Başlar village env., 1190 m, N 37 07 E 31 34, 10.VI.2008, 1 specimen; İbradı-Derebucak road, 1319 m, N 37 08 E 31 33, 10.VI.2008, 9 specimens; **Konya prov.:** Taşkent: Ilıcınar town, 1147 m, N 36 55 E 32 32, 19.VII.2006, 3 specimens; Beyşehir-Akseki road: Huğlu env., 1410 m, N 37 28 E 31 37, 11.VI.2007, 2 specimens; İbradı-Derebucak road: 12 km to Derebucak, 1388 m, N 37 28 E 31 37, 12.VI.2007, 4 specimens; Beyşehir-Akseki road: 65 km to Akseki, Uğurlu env., 1434 m, N 37 24 E 31 40, 12.VI.2007, 5 specimens; Derebucak: Tekebeli pass env., 1224 m, N 37 14 E 31 45, 12.VI.2007, 1 specimen; Hadim: Beyreli, 1524 m, N 36 49 E 32 23, 15.VI.2007, 1 specimen; Hadim: Korualan town env., 1648 m, N 36 58 E 32 24, 12.VI.2008, 2 specimens.

Chorotype: Sibero-European + E-Mediterranean (Palaestino-Taurian).

Remarks: The species is widely distributed in Turkey. It is the first record to Konya province.

Stictoleptura cordigera* (Fuessly, 1775)**Stictoleptura cordigera cordigera* (Fuessly, 1775)**

Material examined: **Antalya prov.:** İbradı, 908 m, N 37 04 E 31 36, 11.VI.2007, 1 specimen; Exit of İbradı 5th km, Gevenli pass env., 1288 m, N 36 09 E 31 32, 11.VI.2007, 1 specimen; Akseki: Ceceler village, 1175 m, N 37 09 E 31 48, 12.VI.2007, 1 specimen; Alanya: Karapınar village, 1154 m, N 36 36 E 32 25, 14.VI.2007, 1 specimen; Alanya: Dikmetaş plateau, 1142 m, N 36 35 E 32 26, 14.VI.2007, 1 specimen; **Konya prov.:** Beyşehir-Akseki road: Tepearası return, 1390 m, N 37 28 E 31 38, 20.07.2006, 2 specimens.

Chorotype: Turano-European.

Remarks: The species is widely distributed in Turkey.

***Stictoleptura excisipes* (Daniel, 1891)**

Material examined: **Antalya prov.:** Akseki-Manavgat road, Gündoğmuş return 5th km, 396 m, N 36 46 E 31 45, 15.V.2007, 1 specimen; Gündoğmuş, 1002 m, N 36 48 E 31 51, 16.V.2007, 47 specimens; Akseki-Manavgat road, Gündoğmuş return, 215 m, N 36 46 E 31 44, 10.VI.2007, 1 specimen; Gündoğmuş: Senir town env., 1024 m, N 36 49 E 31 57, 11.VI.2007, 1 specimen; Murtiçi-Güzelsu, 970 m, N 36 54 E 31 49, 11.VI.2007, 1 specimen; Akseki-Güzelsu, 720 m, N 36 57 E 31 45, 11.VI.2007, 10 specimens; İbradı, 908 m, N 37 04 E 31 36, 11.VI.2007, 3 specimens; Akseki: Irmasan, 1473 m, N 37 06 E 31 48, 12.VI.2007, 2

specimens; Alanya: Karapınar village, 1154 m, N 36 36 E 32 25, 14.VI.2007, 2 specimens; Akseki: Mahmutlu village env., 1054 m, N 36 55 E 31 47, 19.V.2008, 1 specimen; Akseki: Güçlüköy env., 473 m, N 36 47 E 31 45, 19.V.2008, 1 specimen; Akseki: Murtiçi-Güzelsu, 977 m, N 36 54 E 31 49, 09.VI.2008, 1 specimen; Akseki: Güzelsu village, 1154 m, N 36 53 E 31 50, 09.VI.2008, 1 specimen; **Konya prov.:** Derebucak: Tekebeli pass env., 1224 m, N 37 14 E 31 45, 12.VI.2007, 8 specimens.

Chorotype: SW-Asiatic (Syro-Anatolian).

Remarks: The species is distributed only in Southern parts of Turkey. It is the first record to Konya province.

***Stictoleptura fulva* (DeGeer, 1775)**

Material examined: **Antalya prov.:** Alanya / Mahmutlar: Gödre plateau, 1533 m, N 36 39 E 32 22, 18.VII.2006, 4 specimens; Alanya: Entry of Gökbel plateau, 1494 m, N 36 39 E 32 22, 09.VII.2007, 19 specimens; Akseki: Yarpuz env., 1615 m, N 37 13 E 31 55, 11.VII.2007, 13 specimens; Akseki: Çukurköy-Mahmutlu, 830 m, N 36 54 E 31 48, 19.V.2008, 5 specimens; Akseki: Murtiçi-Güzelsu, 977 m, N 36 54 E 31 49, 09.VI.2008, 5 specimens; İbradı-Derebucak road, 10 km pass to İbradı, 1319 m, N 37 08 E 31 33, 10.VI.2008, 2 specimens; **Konya prov.:** Taşkent: Ilıcınar town, 1147 m, N 36 55 E 32 32, 19.VII.2006, 1 specimen; Bozkır: Dereköy-Sorkun, 1272 m, N 37 10 E 32 09, 19.VII.2006, 14 specimens; Beyşehir-Akseki road: Tepearası return, 1390 m, N 37 28 E 31 38, 20.VII.2006, 2 specimens; Yalhöyük: Gölçük plateau, 1736 m, N 37 13 E 32 00, 10.VII.2007, 12 specimens; Bozkır: Çağlayan town, 1210 m, N 37 10 E 32 11, 11.VI.2008, 8 specimens.

Chorotype: European.

Remarks: The species probably is rather widely distributed in Turkey.

***Stictoleptura gevneensis* Özdikmen & Turgut, 2008**

Material examined: Holotip male: **Antalya prov.:** Alanya, Gevne valley (Sarımüt-Çayarası), 1108 m., N 36 38 E 32 23, 14.VI.2007.

Chorotype: Anatolian.

Remarks: The species is endemic to Turkey.

***Stictoleptura rufa* (Brullé, 1832)**

***Stictoleptura rufa rufa* (Brullé, 1832)**

Material examined: **Antalya prov.:** Akseki-Manavgat road, Gündoğmuş return 5th km, 396 m, N 36 46 E 31 45, 15.V.2007, 1 specimen.

Chorotype: Turano-Mediterranean (Turano-Apenninian).

Remarks: The species probably is rather widely distributed in Turkey.

***Anastrangalia dubia* (Scopoli, 1763)**

***Anastrangalia dubia dubia* (Scopoli, 1763)**

Material examined: **Konya prov.:** Derebucak: Tekebeli geçidine 1 km env., 1224 m, N 37 14 E 31 45, 12.VI.2007, 7 specimens.

Chorotype: Turano-European-Mediterranean.

Remarks: The species is rather widely distributed in Turkey. It is the first record to Antalya, Konya provinces and thereby the research area.

***Anastrangalia sanguinolenta* (Linnaeus, 1760)**

Material examined: **Konya prov.:** Derebucak: Tekebeli pass env., 1224 m, N 37 14 E 31 45, 12.VI.2007, 4 specimens.

Chorotype: Sibero-European or European. The records of Siberia was not confirmed by Sama (2002).

Remarks: In general, the species is distributed especially in Northern parts of Turkey. It is the first record to Konya province and thereby the research area. The present record is the top point in South of distribution area of the species.

Anastrangalia montana* (Mulsant &Rey, 1863)**Anastrangalia montana montana* (Mulsant &Rey, 1863)**

Material examined: **Antalya prov.:** Gündoğmuş, 1002 m, N 36 48 E 31 51, 16.V.2007, 1 specimen; Seydişehir-Antalya road: 6-7 km to Akseki, 1274 m, N 37 07 E 31 47, 10.VI.2007, 2 specimens; Akseki: Bademli beli-Tekebeli, 1180 m, N 37 15 E 31 44, 10.VI.2008, 30 specimens; **Konya prov.:** Derebucak: Tekebeli pass env., 1224 m, N 37 14 E 31 45, 12.VI.2007, 71 specimens; Hadim: Beyreli, 1524 m, N 36 49 E 32 23, 15.VI.2007, 1 specimen.

Chorotype: E-Mediterranean (Palaestino-Cyprioto-Taurian + Aegean).

Remarks: The species is distributed Western and Southern parts of Turkey. It is the first record to Konya province and thereby Central Anatolian Region of Turkey.

***Pedostrangalia (Neosphenalia) emmipoda* (Mulsant, 1863)**

Material examined: **Antalya prov.:** İbradı, 908 m, N 37 04 E 31 36, 11.VI.2007, 4 specimens; Exit of İbradı 5th km, Gevenli pass env., 1288 m, N 36 09 E 31 32, 11.VI.2007, 4 specimens; Alanya: Karapınar village, 1154 m, N 36 36 E 32 25, 14.VI.2007, 6 specimens; Alanya: Dikmetaş plateau, 1142 m, N 36 35 E 32 26, 14.VI.2007, 1 specimen; Alanya: Karapınar-Sarımut, 1097 m, N 36 36 E 32 24, 14.VI.2007, 3 specimens; Akseki: Mahmutlu village env., 1054 m, N 36 55 E 31 47, 19.V.2008, 3 specimens; Akseki: Murtiçi-Güzelsu, 977 m, N 36 54 E 31 49, 09.VI.2008, 1 specimen; Akseki: Güzelsu village, 1154 m, N 36 53 E 31 50, 09.VI.2008, 4 specimens; Akseki: Bademli beli-Tekebeli, 1180 m, N 37 15 E 31 44, 10.VI.2008, 2 specimens; **Konya prov.:** Beyşehir-Akseki road: Tepearası return, 1390 m, N 37 28 E 31 38, 20.VII.2006, 1 specimen; Beyşehir-Akseki road: 65 km to Akseki, Uğurlu env., 1434 m, N 37 24 E 31 40, 12.VI.2007, 5 specimens; Beyşehir-Akseki road: Derebucak: Çamlık town env., 1390 m, N 37 24 E 31 40, 12.VI.2007, 2 specimens; Derebucak: Tekebeli pass env., 1224 m, N 37 14 E 31 45, 12.VI.2007, 3 specimens; Bozkır: Yalnızca env., 1437 m, N 37 09 E 32 15, 13.VI.2007, 1 specimen; Bozkır: Dere town, 1252 m, N 37 10 E 32 09, 13.VI.2007, 1 specimen; Hadim: Beyreli village env., 1322 m, N 36 47 E 32 26, 14.VI.2007, 2 specimens; Bozkır: 1 km to Yalnızca, 1445 m, N 37 09 E 32 15, 12.VI.2007, 1 specimen; Hadim: Beyreli village env., 1340 m, N 36 47 E 32 26, 11.VI.2008, 5 specimens; Hadim: Korualan town env., 1648 m, N 36 58 E 32 24, 12.VI.2008, 3 specimens.

Chorotype: SW-Asiatic.

Remarks: The species is rather widely distributed especially in Western and Southern parts of Turkey.

***Pedostrangalia (Neosphenalia) verticalis* (Germar, 1822)**

Material examined: **Antalya prov.:** Alanya: Karapınar village, 1154 m, N 36 36 E 32 25, 14.VI.2007, 1 specimen.

Chorotype: Turano-Mediterranean (Turano-Apenninian).

Remarks: The species is distributed mostly in Northern Turkey. It is the first record to Antalya province and thereby the research area and Mediterranean Region of Turkey.

Pachytodes erraticus* (Dalman, 1817)**Pachytodes erraticus erraticus* (Dalman, 1817)**

Material examined: **Konya prov.:** Tekebeli pass env., 1224 m, N 37 14 E 31 45, 12.VI.2007, 16 specimens; Bozkır-Hadim road: Söğüt and Dereiçi env., 1372 m, N 37 06 E 32 18, 13.VI.2007, 11 specimens; Bozkır-Hadim road: 22 km to Hadim, 1344 m, N 37 02 E 32 19, 21.V.2008, 7 specimens; Hadim: Korualan town env., 1648 m, N 36 58 E 32 24, 12.VI.2008, 2 specimens; **Antalya prov.:** Alanya: Karapınar village, 1154 m, N 36 36 E 32 25, 14.VI.2007, 1 specimen.

Chorotype: Sibero-European.

Remarks: The species is widely distributed in Turkey.

Rutpela maculata* (Poda, 1761)**Rutpela maculata maculata* (Poda, 1761)**

Material examined: **Konya prov.:** Derebucak: Tekebeli pass env., 1224 m, N 37 14 E 31 45, 12.VI.2007, 3 specimens.

Chorotype: European.

Remarks: The species is widely distributed in Turkey. It is the first record to Konya province.

***Stenurella bifasciata* (Müller, 1776)**

***Stenurella bifasciata nigrosuturalis* (Reitter, 1895)**

Material examined: **Antalya prov.:** Alanya / Mahmutlar: Gödre plateau, 1533 m, N 36 39 E 32 22, 18.VII.2006, 1 specimen; Akseki-Manavgat road, Gündoğmuş return, 215 m, N 36 46 E 31 44, 10.VI.2007, 12 specimens; Gündoğmuş road, 245 m, N 36 49 E 31 57, 11.VI.2007, 1 specimen; İbradı, 908 m, N 37 04 E 31 36, 11.VI.2007, 1 specimen; Alanya: Dikmetaş plateau, 1142 m, N 36 35 E 32 26, 14.VI.2007, 1 specimen; Alanya: Sarımut-Çayarası, 1108 m, N 36 38 E 32 23, 14.VI.2007, 1 specimen; Alanya: Sarımut-Karapınar, 1092 m, N 36 37 E 32 24, 09.VII.2007, 1 specimen; Alanya: Entry of Gökbel plateau, 1494 m, N 36 39 E 32 22, 09.VII.2007, 6 specimens; Alanya: Gökbel plateau, 1850 m, N 36 40 E 32 20, 09.VII.2007, 7 specimens; İbradı-Beyşehir road: Gevenli pass env., 840 m, N 37 10 E 31 32, 11.VII.2007, 9 specimens; Alanya: 6 km to Dikmetaş plateau, 1109 m, N 36 36 E 32 25, 11.VI.2008, 4 specimens; **Konya prov.:** Taşkent-Alanya road: 80 km to Alanya, 1482 m, N 36 46 E 32 27, 18.VII.2006, 1 specimen; Taşkent: Ilıcapınar town, 1147 m, N 36 55 E 32 32, 19.VII.2006, 5 specimens; Derebucak: Tekebeli pass env., 1224 m, N 37 14 E 31 45, 12.VI.2007, 7 specimens; Hadim-Bozkır road, Yazdamı village env., 1434 m, N 37 07 E 32 17, 13.VI.2007, 6 specimens; Bozkır-Hadım road: Söğüt and Dereiçi env., 1372 m, N 37 06 E 32 18, 13.VI.2007, 3 specimens; Hadım: Gevne: Küçükli return env., 1762 m, N 36 59 E 32 27, 09.07.2007, 2 specimens; Yalıhöyük: Gölcük plateau, 1736 m, N 37 13 E 32 00, 10.VII.2007, 5 specimens; Bozkır: Yalnızca env., 1437 m, N 37 09 E 32 15, 13.VI.2007, 1 specimen; Taşkent-Alanya: Çayarası district, 1336 m, N 36 38 E 32 24, 11.VI.2008, 4 specimens.

Chorotype: Sibero-European + SW-Asiatic.

Remarks: The species is widely distributed in Turkey.

***Stenurella melanura* (Linnaeus, 1758)**

Material examined: **Antalya prov.:** Alanya: Dikmetaş plateau, 1142 m, N 36 35 E 32 26, 14.VI.2007, 1 specimen.

Chorotype: Sibero-European.

Remarks: The species is distributed especially in Northern and Western parts of Turkey.

SUBFAMILY CERAMBYCINAE

TRIBE CERAMBYCINI

***Cerambyx (Cerambyx) cerdo* Linnaeus, 1758**

***Cerambyx (Cerambyx) cerdo cerdo* Linnaeus, 1758**

Material examined: **Konya prov.:** Taşkent-Alanya road: 80 km to Alanya, 1482 m, N 36 46 E 32 27, 19-28.VII.2006, 1 specimen; Hadım: Beyreli village env., 1322 m, N 36 47 E 32 26, 14.VI.2007, 1 specimen; Hadım-Alanya road: 70 km to Alanya, 1298 m, N 36 45 E 32 27, 30.VII.2007, 1 specimen.

Chorotype: Turano-European-Mediterranean.

Remarks: The species is rather widely distributed in Turkey. It is the first record to Konya province.

***Cerambyx (Cerambyx) miles* Bonelli, 1812**

Material examined: **Antalya prov.:** Alanya: Sarımut-Karapınar, 1092 m, N 36 37 E 32 24, 09.VII.2007, 1 specimen.

Chorotype: S-European.

Remarks: The species is distributed especially in Western and Southern parts of Turkey. It is the first record to Antalya province.

***Cerambyx (Cerambyx) welensii* (Küster, 1845)**

Material examined: **Antalya prov.:** Alanya: Sarımut env., 1113 m, N 36 37 E 32 23, 09.VII.2007, 2 specimens; Akseki: Yarpuz env., 1615 m, N 37 13 E 31 55, 10.VII.2007, 1 specimen; **Konya prov.:** Beyşehir-Akseki road: Huğlu env., 1398 m, N 37 28 E 31 37,

11.VII.2007, 1 specimen; Taşkent: Avşar town, 1556 m, N 36 54 E 32 30, 09.VII.2007, 1 specimen.

Chorotype: S-European.

Remarks: The species probably is rather widely distributed especially in Western and Southern parts of Turkey. It is the first record to Konya province.

TRIBE TRACHYDERINI

Purpuricenus budensis (Götz, 1783)

Purpuricenus budensis budensis (Götz, 1783)

Material examined: **Antalya prov.**: Akseki-Manavgat road, Gündoğmuş return 5th km, 396 m, N 36 46 E 31 45, 15.V.2007, 4 specimens; Akseki-Manavgat road, Gündoğmuş return, 215 m, N 36 46 E 31 44, 10.VI.2007, 27 specimens; Gündoğmuş: Senir town env., 1024 m, N 36 49 E 31 57, 11.VI.2007, 6 specimens; Akseki-Güzelsu, 903 m, N 36 57 E 31 47, 11.VI.2007, 5 specimens; İbradı, 908 m, N 37 04 E 31 36, 11.VI.2007, 35 specimens; Exit of İbradı 5th km, Gevenli pass env., 1288 m, N 36 09 E 31 32, 11.VI.2007, 2 specimens; Alanya: Karapınar village, 1154 m, N 36 36 E 32 25, 14.VI.2007, 2 specimens; Alanya: Karapınar-Sarımut, 1097 m, N 36 36 E 32 24, 14.VI.2007, 1 specimen; Alanya: Sarımut-Karapınar, 1092 m, N 36 37 E 32 24, 09.VII.2007, 5 specimens; Akseki: Mahmutlu village env., 1054 m, N 36 55 E 31 47, 19.V.2008, 1 specimen; Akseki: Murtiçi-Güzelsu, 977 m, N 36 54 E 31 49, 09.VI.2008, 4 specimens; Seydişehir-Manavgat road: Gündoğmuş return 10th km, 450 m, N 36 46 E 31 46, 09.VI.2008, 3 specimens; Akseki: Güzelsu village, 1154 m, N 36 53 E 31 50, 09.VI.2008, 9 specimens; Akseki: Bademli beli-Tekebeli, 1180 m, N 37 15 E 31 44, 10.VI.2008, 2 specimens; Alanya: 6 km to Dikmetaş plateau, 1109 m, N 36 36 E 32 25, 11.VI.2008, 1 specimen; İbradı, 1008 m, N 37 05 E 31 36, 09.VI.2008, 1 specimen; Akseki: Güçlüköy env., 473 m, N 36 47 E 31 45, 19.V.2008, 1 specimen; **Konya prov.**: Beyşehir-Akseki road: Tepearası return, 1390 m, N 37 28 E 31 38, 20.VII.2006, 1 specimen; Bozkır: Dere town, 1252 m, N 37 10 E 32 09, 13.VI.2007, 2 specimens; Hadim: Beyreli village env., 1322 m, N 36 47 E 32 26, 14.VI.2007, 1 specimen.

Chorotype: Turano-European.

Remarks: The species is widely distributed in Turkey.

Purpuricenus dalmatinus Sturm, 1843

Material examined: **Antalya prov.**: Gündoğmuş, 1002 m, N 36 48 E 31 51, 16.V.2007, 1 specimen; Akseki-Güzelsu, 720 m, N 36 57 E 31 45, 11.VI.2007, 2 specimens.

Chorotype: E-Mediterranean.

Remarks: The species is widely distributed in Western and Southern parts of Turkey.

Purpuricenus desfontainei (Fabricius, 1792)

Purpuricenus desfontainei inhumeralis Pic, 1891

Material examined: **Antalya prov.**: Gündoğmuş, 1002 m, N 36 48 E 31 51, 16.V.2007, 9 specimens; Akseki-Güzelsu, 903 m, N 36 57 E 31 47, 11.VI.2007, 2 specimens; Akseki: Mahmutlu village env., 1054 m, N 36 55 E 31 47, 19.V.2008, 8 specimens.

Chorotype: Turano-Mediterranean.

Remarks: The species is rather widely distributed in South-Western and Southern parts of Turkey.

Purpuricenus interscapillatus Plavilstshikov, 1937

Purpuricenus interscapillatus nudicollis Demelt, 1968

Material examined: **Antalya prov.**: Alanya: Dikmetaş plateau, 1142 m, N 36 35 E 32 26, 14.VI.2007, 1 specimen; **Konya prov.**: Hadim-Alanya road: 70 km to Alanya, 1298 m, N 36 45 E 32 27, 09.VII.2007, 1 specimen.

Chorotype: E-Mediterranean (Palaestino-Cyprioto-Taurian).

Remarks: The species is distributed only in Southern parts for Turkey.

TRIBE CALLICHRMATINI***Aromia moschata* (Linnaeus, 1758)*****Aromia moschata ambrosiaca* (Steven, 1809)**

Material examined: **Konya prov.:** Taşkent: Aşağı town, 1556 m, N 36 54 E 32 30, 09.VI.2007, 1 specimen.

Chorotype: Palearctic.

Remarks: The species is widely distributed in Turkey. It is the first record to Konya province.

TRIBE OBRINI***Anatolobrium eggeri* Adlbauer, 2004**

Material examined: **Antalya prov.:** Alanya: Sarımut env., 1113 m, N 36 37 E 32 23, 22.VIII.2007, 8 specimens.

Chorotype: Anatolian.

Remarks: The species is endemic to Turkey. It has been known only from Antalya province in S Turkey.

TRIBE CERTALLINI***Certallum ebulinum* (Linnaeus, 1767)**

Material examined: **Antalya prov.:** Gündoğmuş-Akseki road, 410 m, N 36 47 E 31 45, 22.IV.2008, 1 specimen; **Konya prov.:** Seydişehir: Çavuş village, 1186 m, N 37 37 E 31 55, 13.V.2006, 1 specimen.

Chorotype: Turano-European-Mediterranean.

Remarks: The species is widely distributed in Turkey.

TRIBE DEILINI***Deilus fugax* (Olivier, 1790)**

Material examined: **Antalya prov.:** İbradı, 1036 m, N 36 05 E 31 36, 16.05.2007, 3 specimens.

Chorotype: Turano-European-Mediterranean.

Remarks: The species is widely distributed especially in Western and Southern parts of Turkey.

TRIBE STENOPTERINI***Stenopterus rufus* (Linnaeus, 1767)*****Stenopterus rufus syriacus* Pic, 1892**

Material examined: **Antalya prov.:** Gündoğmuş: Ümütlü village, 627 m, N 36 46 E 32 00, 15.V.2006, 3 specimens; İbradı, 1036 m, N 36 05 E 31 36, 16.V.2007, 1 specimen; İbradı, 908 m, N 37 04 E 31 36, 11.VI.2007, 1 specimen; Alanya: Karapınar village, 1154 m, N 36 36 E 32 25, 14.VI.2007, 3 specimens; Alanya: Dikmetaş plateau, 1142 m, N 36 35 E 32 26, 14.VI.2007, 1 specimen; Alanya: Karapınar-Sarımut, 1097 m, N 36 36 E 32 24, 14.VI.2007, 1 specimen; Akseki: Çukurköy-Mahmutlu, 830 m, N 36 54 E 31 48, 19.V.2008, 1 specimen; Akseki: Güçlüköy env., 473 m, N 36 47 E 31 45, 19.V.2008, 4 specimens; İbradı, 1008 m, N 37 05 E 31 36, 09.VI.2008, 2 specimens; **Konya prov.:** Taşkent: İlicapınar town, 1147 m, N 36 55 E 32 32, 19.VII.2006, 2 specimens; Between Hadım-Bozkr, 1000 m, N 36 59 E 32 21, 19.VII.2006, 3 specimens; Hadım: Beyreli, 1524 m, N 36 49 E 32 23, 15.VI.2007, 1 specimen.

Chorotype: Turano-European.

Remarks: The species is widely distributed in Turkey.

***Stenopterus atricornis* Pic, 1891**

Material examined: **Antalya prov.:** Alanya: Karapınar village, 1154 m, N 36 36 E 32 25, 14.VI.2007, 1 specimen; Akseki: Çukurköy-Mahmutlu, 830 m, N 36 54 E 31 48, 19.V.2008, 1 specimen; Akseki: Güçlüköy env., 473 m, N 36 47 E 31 45, 19.V.2008, 2 specimens; **Konya prov.:** Hadım-Bozkr road, Yazdamı village env., 1434 m, N 37 07 E 32 17, 13.VI.2007, 1 specimen.

Chorotype: Turano-Mediterranean (Balkano-Anatolian).

Remarks: The species is distributed only in Southern parts of Turkey. It is the first record to Konya province and thereby Central Anatolian Region of Turkey. The present records are interesting. Since the species had been recorded only by Adlbauer (1988) from Turkey before the present work.

TRIBE HYBODERINI

Lampropterus femoratus (Germar, 1824)

Material examined: **Antalya prov.:** Alanya-Taşkent: Exit of Karapınar village, 1100 m, N 36 36 E 32 24, 16.V.2006, 20 specimens; Akseki-Manavgat road, Gündoğmuş return 5th km, 396 m, N 36 46 E 31 45, 15.V.2007, 3 specimens; Seydişehir-Antalya road: 6-7 km to Akseki, 1274 m, N 37 07 E 31 47, 10.VI.2007, 1 specimen; Akseki-Manavgat road, Gündoğmuş return, 215 m, N 36 46 E 31 44, 10.VI.2007, 2 specimens; Akseki: Murtiçi-Güzelsu, 970 m, N 36 54 E 31 49, 11.VI.2007, 4 specimens; Akseki-Güzelsu, 720 m, N 36 57 E 31 45, 11.VI.2007, 4 specimens; İbradı, 908 m, N 37 04 E 31 36, 11.VI.2007, 1 specimen; Exit of İbradı 5th km, Gevenli pass env., 1288 m, N 36 09 E 31 32, 11.VI.2007, 1 specimen; Alanya: Karapınar village, 1154 m, N 36 36 E 32 25, 14.VI.2007, 29 specimens; Alanya: Dikmetaş plateau, 1142 m, N 36 35 E 32 26, 14.VI.2007, 2 specimens; Alanya: Karapınar-Sarımut, 1097 m, N 36 36 E 32 24, 14.VI.2007, 1 specimen; Alanya: Sarımut-Çayarası, 1108 m, N 36 38 E 32 23, 14.VI.2007, 20 specimens; Akseki: Mahmutlu village env., 1054 m, N 36 55 E 31 47, 19.V.2008, 3 specimens; İbradı, 1008 m, N 37 05 E 31 36, 09.VI.2008, 1 specimen; İbradı: Başlar village env., 1190 m, N 37 07 E 31 34, 10.VI.2008, 4 specimens; Akseki: Çukurköy-Mahmutlu, 830 m, N 36 54 E 31 48, 19.V.2008, 1 specimen; İbradı-Derebucak road, 10 km pass to İbradı, 1319 m, N 37 08 E 31 33, 10.VI.2008, 6 specimens; **Konya prov.:** Bozkır: Dere town, 1252 m, N 37 10 E 32 09, 13.VI.2007, 1 specimen; Taşkent-Alanya: Çayarası district, 1336 m, N 36 38 E 32 24, 11.VI.2008, 1 specimen.

Chorotype: Turano-Mediterranean (Turano-E-Mediterranean).

Remarks: The species is rather widely distributed in Turkey.

TRIBE MOLORCHINI

Glaphyra kiesenwetteri (Mulsant & Rey, 1861)

Glaphyra kiesenwetteri hircus (Abeille de Perrin, 1881)

Material examined: **Konya prov.:** İbradı-Derebucak road: 12 km to Derebucak, 1217 m, N 37 22 E 31 29, 20.V.2008, 1 specimen.

Chorotype: Turano-Mediterranean (Turano-E-Mediterranean + Turano-Apenninian)

Remarks: The species is rather widely distributed in Turkey.

TRIBE CLYTINI

Plagionotus (Neoplacionotus) bobelayei (Brullé, 1832)

Material examined: **Antalya prov.:** Alanya: Sarımut-Çayarası, 1108 m, N 36 38 E 32 23, 14.VI.2007, 1 specimen; **Konya prov.:** Seydişehir-Antalya road 5th km, 1224 m, N 37 22 E 31 52, 10.VI.2007, 2 specimens.

Chorotype: Turano-Mediterranean (Turano-E-Mediterranean)

Remarks: The species is rather widely distributed in Turkey. It is the first record to Antalya, Konya provinces and thereby the research area.

Plagionotus (Echinocerus) floralis (Pallas, 1773)

Material examined: **Antalya prov.:** Exit of İbradı 5th km, Gevenli pass env., 1288 m, N 36 09 E 31 32, 11.VI.2007, 2 specimens; Alanya: Dikmetaş plateau, 1142 m, N 36 35 E 32 26, 14.VI.2007, 3 specimens; Alanya: Sarımut-Çayarası, 1108 m, N 36 38 E 32 23, 14.VI.2007, 1 specimen; **Konya prov.:** İbradı-Derebucak road: 12 km to Derebucak, 1213 m, N 37 18 E 31 27, 11.VI.2007, 4 specimens; Bozkır: Yalnızca env., 1445 m, N 37 09 E 32 15, 12.VI.2007, 4 specimens; Bozkır: Yalnızca env., 1437 m, N 37 09 E 32 15, 13.VI.2007, 5 specimens; Bozkır, 1229 m, N 37 10 E 32 14, 10.VII.2007, 1 specimen; Hadim: Korualan town env., 1648 m, N 36 58 E 32 24, 12.VI.2008, 54 specimens; Bozkır: Yalnızca env., 1490 m, N 37 09 E 32 15, 12.VI.2008, 1 specimen; Ahırılı: Aliçerçi village env., 1213 m, N 37 14 E 32 09, 12.VI.2008, 7 specimens.

Chorotype: Sibero-European.

Remarks: The species is widely distributed in Turkey.

***Chlorophorus dinae* Rapuzzi & Sama, 1999**

Material examined: **Antalya prov.:** Akseki-Güzelsu, 720 m, N 36 57 E 31 45, 11.VI.2007, 1 specimen; Alanya: Karapınar village, 1154 m, N 36 36 E 32 25, 14.VI.2007, 2 specimens. Akseki: Murtıçı-Güzelsu, 977 m, N 36 54 E 31 49, 09.VI.2008, 1 specimen; **Konya prov.:** Derebucak: Tekebeli pass env., 1224 m, N 37 14 E 31 45, 12.VI.2007, 1 specimen; Bozkır: Dere town, 1252 m, N 37 10 E 32 09, 13.VI.2007, 1 specimen.

Chorotype: SW-Asiatic (Syro-Anatolian).

Remarks: The species is distributed only in Southern parts of Turkey. It is the first record to Antalya, Konya provinces and thereby the research area and Central Anatolian Region of Turkey.

***Chlorophorus hungaricus* Seidlitz, 1891**

Material examined: **Konya prov.:** Hadim: Beyreli, 1524 m, N 36 49 E 32 23, 15.VI.2007, 1 specimen.

Chorotype: Turano-European (Ponto-Pannonian).

Remarks: The species probably is rather widely distributed in Turkey. It is the first record to Konya province and thereby the research area.

Chlorophorus gratiosus* (Marseul, 1868)**Chlorophorus gratiosus sparsus* (Reitter, 1886)**

Material examined: **Antalya prov.:** Akseki-Manavgat road, Gündoğmuş return 5th km, 396 m, N 36 46 E 31 45, 15.V.2007, 5 specimens; Gündoğmuş, 1002 m, N 36 48 E 31 51, 16.V.2007, 1 specimen; Akseki-Manavgat road, Gündoğmuş return, 215 m, N 36 46 E 31 44, 10.VI.2007, 1 specimen; Akseki: Murtıçı-Güzelsu, 970 m, N 36 54 E 31 49, 11.VI.2007, 1 specimen; Akseki-Güzelsu, 903 m, N 36 57 E 31 47, 11.VI.2007, 4 specimens; Akseki-Güzelsu, 720 m, N 36 57 E 31 45, 11.VI.2007, 4 specimens; İbradı, 908 m, N 37 04 E 31 36, 11.VI.2007, 3 specimens; Exit of İbradı 5th km, Gevenli pass env., 1288 m, N 36 09 E 31 32, 11.VI.2007, 1 specimen; Akseki: Mahmutlu village env., 1054 m, N 36 55 E 31 47, 19.V.2008, 3 specimens; Akseki: Güçlüköy env., 473 m, N 36 47 E 31 45, 19.V.2008, 1 specimen; Akseki: Güzelsu village, 1154 m, N 36 53 E 31 50, 09.VI.2008, 1 specimen; Akseki: Murtıçı-Güzelsu, 977 m, N 36 54 E 31 49, 09.VI.2008, 1 specimen; İbradı, 1008 m, N 37 05 E 31 36, 09.VI.2008, 2 specimens; İbradı: Başlar village env., 1190 m, N 37 07 E 31 34, 10.VI.2008, 2 specimens.

Chorotype: E-Mediterranean (Palaestino-Taurian).

Remarks: The species is distributed only in South-Western and Southern parts of Turkey.

***Chlorophorus nivipictus* (Kraatz, 1879)**

Material examined: **Konya prov.:** Bozkır: Çağlayan town, 1210 m, N 37 10 E 32 11, 11.VI.2008, 1 specimen.

Chorotype: SW-Asiatic.

Remarks: The species is distributed only in Southern parts of Turkey. It is the first record to Konya province.

***Chlorophorus sartor* (Müller, 1766)**

Material examined: **Antalya prov.:** Akseki-Manavgat road, Gündoğmuş return 5th km, 396 m, N 36 46 E 31 45, 15.V.2007, 1 specimen; Akseki-Güzelsu, 720 m, N 36 57 E 31 45, 11.VI.2007, 1 specimen; İbradı, 908 m, N 37 04 E 31 36, 11.VI.2007, 1 specimen; Alanya: Dikmetaş plateau, 1142 m, N 36 35 E 32 26, 14.VI.2007, 1 specimen; Alanya: Sarımut-Karapınar, 1092 m, N 36 37 E 32 24, 09.VII.2007, 22 specimens; Akseki-Manavgat road: Gündoğmuş return: 30 km to Gündoğmuş, 460 m, N 36 46 E 39 46, 11.VII.2007, 1 specimen; **Konya prov.:** Taşkent-Alanya road: 80 km to Alanya, 1482 m, N 36 46 E 32 27, 18.VII.2006, 2 specimens; Taşkent: Ilıcınar town, 1147 m, N 36 55 E 32 32, 19.VII.2006, 66 specimens; Between Hadim-Bozkır, 1000m, N 36 59 E 32 21, 19.VII.2006, 6 specimens; Exit of Bozkır, 1175 m, N 37 10 E 32 12, 19.VII.2006, 3 specimens; Hadim-Alanya road: 70 km to Alanya, 1298 m, N 36 45 E 32 27, 09.07.2007, 1 specimen; Bozkır-Hadim road: Bozkır, 1315 m, 37 01 N 32 19 E, 10.VII.2007, 2 specimens; Bozkır, 1229 m, N 37 10 E 32 14, 10.VII.2007, 1 specimen; Beşşehir: Üstünler env., 1150 m, N 33 35 E 31 34, 12.VII.2007, 2 specimens.

Chorotype: Turano-European.

Remarks: The species is widely distributed in Turkey.

***Chlorophorus trifasciatus* (Fabricius, 1781)**

Material examined: **Konya prov.**: Bozkır: Yalnızca env., 1445 m, N 37 09 E 32 15, 12.VI.2007, 7 specimens; Bozkır: Yalnızca, 1460 m, N 37 08 E 32 15, 13.VI.2007, 5 specimens; Bozkır: Yalnızca env., 1437 m, N 37 09 E 32 15, 13.VI.2007, 12 specimens; Bozkır, 1229 m, N 37 10 E 32 14, 10.VII.2007, 1 specimen; Hadim: Korualan town env., 1648 m, N 36 58 E 32 24, 12.VI.2008, 13 specimens.

Chorotype: Mediterranean.

Remarks: The species probably is widely distributed especially in Western half of Turkey.

***Chlorophorus varius* (Müller, 1766)**

***Chlorophorus varius damascenus* (Chevrolat, 1854)**

Material examined: **Antalya prov.**: Akseki-Manavgat road: Gündoğmuş return: 30 km to Gündoğmuş, 460 m, N 36 46 E 39 46, 11.VII.2007, 1 specimen; **Konya prov.**: Taşkent-Alanya road: 80 km to Alanya, 1482 m, N 36 46 E 32 27, 18.VII.2006, 2 specimens; Between Hadim-Bozkır, 1000 m, N 36 59 E 32 21, 19.VII.2006, 1 specimen; Taşkent: Ilcapınar town, 1147 m, N 36 55 E 32 32, 19.VII.2006, 6 specimens; Hadim-Alanya road: 70 km to Alanya, 1298 m, N 36 45 E 32 27, 09.VII.2007, 1 specimen; Alanya: Sarımut-Karapınar, 1092 m, N 36 37 E 32 24, 09.VII.2007, 2 specimens; Bozkır, 1229 m, N 37 10 E 32 14, 10.VII.2007, 1 specimen.

Chorotype: Palearctic.

Remarks: The species is widely distributed in Turkey.

***Clytus rhamni* Germar, 1817**

Material examined: **Antalya prov.**: Akseki: Murtiçi-Güzelsu, 970 m, N 36 54 E 31 49, 11.VI.2007, 2 specimens; İbradı, 908 m, N 37 04 E 31 36, 11.VI.2007, 5 specimens; İbradı, 1008 m, N 37 05 E 31 36, 09.VI.2008, 3 specimens; **Konya prov.**: Hadim: Korualan town env., 1648 m, N 36 58 E 32 24, 12.VI.2008, 3 specimens.

Chorotype: European.

Remarks: The species is widely distributed in Turkey.

SUBFAMILY LAMIINAE

TRIBE MONOCHAMINI

***Monochamus galloprovincialis* (Olivier, 1795)**

***Monochamus galloprovincialis tauricola* Pic, 1912**

Material examined: **Antalya prov.**: Akseki, Yarpuz env., 1645 m, N 37 13 E 31 55, 13. VIII. 2007, 1 specimen; **Konya prov.**: Taşkent: Avşar town, 1556 m, N 36 54 E 32 30, 24-30.VI.2007, 1 specimen.

Chorotype: Sibero-European.

Remarks: The species is rather widely distributed in Turkey. It is the first record to Konya province.

TRIBE DORCADIINI

***Dorcadion (Cribridorcadion) anatolicum* Pic, 1900**

Material examined: **Konya prov.**: Taşkent: Faşikan plateau, 1229 m, N 36 54 E 32 31, 16.V.2006, 10 specimens; Taşkent: Feslikan plateau, Çukuryurt pass env., 1900 m, N 36 50 E 32 29, 13.V.2007, 18 specimens; Hadim-Beyreli road, 1880 m, N 36 56 E 32 23, 14.V.2007, 14 specimens; Taşkent: Faşikan plateau env., 1730m, N 36 51 E 32 31, 21.IV.2008, 9 specimens.

Chorotype: Anatolian.

Remarks: The species is endemic to Turkey. It is distributed only in Central and Southern parts of Turkey.

***Dorcadion (Cribridorcadion) lohsei* Braun, 1976**

Material examined: **Konya prov.:** Taşkent: Faşıkan plateau, 1229 m, N 36 54 E 32 31, 16.V.2006, 5 specimens.

Chorotype: Anatolian.

Remarks: The species is endemic to Turkey. It is distributed only in Central and Southern parts of Turkey.

Dorcadion (Cribridorcadion) scabricolle* (Dalman, 1817)**Dorcadion (C.) scabricolle caramanicum* Daniel & Daniel, 1903**

Material examined: **Konya prov.:** Bozkır: Kuruçay-Ahırlı, 1270 m, N 37 12 E 32 05, 28.III.2007, 1 specimen.

Chorotype: SW-Asiatic (Anatolo-Caucasian + Irano-Caucasian + Irano-Anatolian).

Remarks: The species is widely distributed in Turkey.

TRIBE TETROPINI***Tetrops praeustus* (Linnaeus, 1758)*****Tetrops praeustus anatolicus* Özdikmen & Turgut, 2008**

Material examined: **Antalya prov.:** Alanya-Taşkent: Exit of Karapınar village, 1100 m, N 36 36 E 32 24, 16.V.2006, 1 specimen; Alanya: Karapınar-Sarımut, 1100 m, N 36 36 E 32 24, 13.V.2007, 1 specimen; **Konya prov.:** Hadım-Alanya road: 70 km to Alanya, 1298 m, N 36 45 E 32 27, 16.V.2006, 8 specimens; Hadım: Küçükli village env., 1298 m, N 36 45 E 32 27, 13.V.2007, 48 specimens; Bozkır: Üçpınar village, 1471 m, N 37 08 E 32 15, 15.V.2007, 10 specimens; Bozkır: Sorkun town, 1281 m, N 37 09 E 32 08, 15.V.2007, 14 specimens; Beyşehir-Akseki road: Huğlu env., 1410 m, N 37 28 E 31 37, 11.VI.2007, 1 specimen; Bozkır: Dere town, 1252 m, N 37 10 E 32 09, 13.VI.2007, 4 specimens.

Chorotype: Palearctic.

Remarks: The species probably is rather widely distributed in Turkey. *T. praeustus anatolicus* was described by Özdikmen & Turgut, 2008 with the present materials. This species is the first record to Konya province.

TRIBE SAPERDINI***Saperda (Compsidia) quercus* Charpentier, 1825*****Saperda (Compsidia) quercus ocellata* Abeille de Perrin, 1895**

Material examined: **Antalya prov.:** Akseki-Manavgat road, Gündoğmuş return 5th km, 396 m, N 36 46 E 31 45, 15.V.2007, 1 specimen.

Chorotype: E-Mediterranean or Turano-Mediterranean (Balkano-Anatolian) + E-Mediterranean (Palaestino-Taurian).

Remarks: The species is distributed only in Southern parts of Turkey. It is the first record to Antalya province and thereby the research area.

TRIBE PHYTOECIINI***Oberea (Amaurostoma) erythrocephala* (Schrank, 1776)*****Oberea (A.) erythrocephala erythrocephala* (Schrank, 1776)**

Material examined: **Konya prov.:** Bozkır: Yalnızca, 1460 m, N 37 08 E 32 15, 13.VI.2007, 1 specimen; Hadım: Beyreli village env., 1322 m, N 36 47 E 32 26, 14.VI.2007, 1 specimen; Taşkent-Alanya: Çayarası district, 1336 m, N 36 38 E 32 24, 11.VI.2008, 1 specimen.

Chorotype: Palearctic.

Remarks: The species is widely distributed in Turkey. It is the first record to Konya province.

Oxyliia argentata* (Ménétriés, 1832)**Oxyliia argentata languida* (Ménétriés, 1839)**

Material examined: **Antalya prov.:** Akseki-Güzelsu, 903 m, N 36 57 E 31 47, 11.VI.2007, 1 specimen; **Konya prov.:** İbradı-Derebucak road: 12 km to Derebucak, 1213 m, N 37 18 E 31 27, 11.VI.2007, 1 specimen; Beyşehir-Akseki road: Huğlu env., 1410 m, N 37 28 E 31 37, 11.VI.2007, 1 specimen; Bozkır: Dere town, 1252 m, N 37 10 E 32 09, 13.VI.2007, 1 specimen.

Chorotype: SW-Asiatic (Anatolo-Caucasian + Irano-Caucasian + Irano-Anatolian) + Turanian (Ponto-Caspian).

Remarks: The species is rather widely distributed in Turkey.

***Oxytia duponcheli* (Brullé, 1832)**

Material examined: **Antalya prov.**: İbradı-Akseki road, 984 m, N 37 05 E 31 36, 20.V.2008, 1 specimen; Akseki: Güzelsu village, 1154 m, N 36 53 E 31 50, 09.VI.2008, 2 specimens; Akseki: Emiraşıkdar village env., 434 m, N 37 03 E 31 41, 09.VI.2008, 1 specimen; İbradı: Başlar village env., 1190 m, N 37 07 E 31 34, 10.VI.2008, 6 specimens; **Konya prov.**: Beyşehir-Akseki road: Huğlu env., 1410 m, N 37 28 E 31 37, 11.VI.2007, 4 specimens; Beyşehir-Akseki road: Derebucak: Çamlık town env., 1390 m, N 37 24 E 31 40, 12.VI.2007, 3 specimens; Bozkır: Yalnızca env., 1437 m, N 37 09 E 32 15, 13.VI.2007, 2 specimens; Bozkır: Dere town, 1252 m, N 37 10 E 32 09, 13.VI.2007, 1 specimen; Derebucak, 1217 m, N 37 22 E 31 29, 20.V.2008, 4 specimens; Gencek-Derebucak, 1212 m, N 37 25 E 31 29, 20.V.2008, 4 specimens; Bozkır-Hadim road: 22 km to Hadim, 1344 m, N 37 02 E 32 19, 21.V.2008, 2 specimens; Derebucak, 1217 m, N 37 22 E 31 29, 10.VI.2008, 2 specimens; Bozkır: Yalnızca village env., 1490 m, N 37 09 E 32 15, 12.VI.2008, 1 specimen.

Chorotype: Turano-Mediterranean (Balkano-Anatolian).

Remarks: The species probably is rather widely distributed in Turkey. It is the first record to Antalya, Konya provinces and thereby the research area.

***Coptosia (Coptosia) bithynensis* (Ganglbauer, 1884)**

Material examined: **Antalya prov.**: İbradı, 908 m, N 37 04 E 31 36, 11.VI.2007, 1 specimen; İbradı-Akseki road, 984 m, N 37 05 E 31 36, 20.V.2008, 1 specimen; **Konya prov.**: Hadim, 1569 m, N 36 58 E 32 26, 14.V.2007, 1 specimen; Bozkır: Yalnızca village env., 1490 m, N 37 09 E 32 15, 12.VI.2008, 1 specimen.

Chorotype: Turano-Mediterranean (Turano-Balkan).

Remarks: The species probably is rather widely distributed in Turkey. It is the first record to Antalya, Konya provinces and thereby the research area and Central Anatolian Region of Turkey.

***Phytoecia (Pilemia) hirsutula* (Frölich, 1793)**

***Phytoecia (Pilemia) hirsutula hirsutula* (Frölich, 1793)**

Material examined: **Antalya prov.**: Alanya: Keşbelen plateau, 1750 m, N 36 37 E 32 22, 14.VI.2007, 1 specimen; Akseki: Mahmutlu village env., 1054 m, N 36 55 E 31 47, 19.V.2008, 15 specimens; Akseki: Çukurköy-Mahmutlu, 830 m, N 36 54 E 31 48, 19.V.2008, 2 specimens; İbradı-Akseki road, 984 m, N 37 05 E 31 36, 20.V.2008, 1 specimen; **Konya prov.**: Gencek- Derebucak, 1212 m, N 37 25 E 31 29, 20.V.2008, 1 specimen.

Chorotype: Turano-Mediterranean (Turano-E-Mediterranean).

Remarks: This species probably is rather widely distributed in Turkey.

***Phytoecia (Pilemia) samii* Özdikmen & Turgut, 2010**

Material examined: Holotype male: Turkey: **Konya prov.**: Derebucak, N 37 22 E 31 29, 1217 m, 20.V.2008. Paratypes: 1 male same with holotype, 1 male **Konya prov.**: İbradı-Derebucak road, 12 km to Derebucak, N 37 28 E 31 37, 1388 m, 12.VI.2007.

Chorotype: Anatolian.

Remarks: This species is endemic to Turkey.

***Phytoecia (Helladia) armeniaca* Frivaldsky, 1878**

***Phytoecia (Helladia) armeniaca armeniaca* Frivaldsky, 1878**

Material examined: **Konya prov.**: Derebucak, 1221 m, N 36 22 E 31 29, 16.V.2007, 3 specimens; Derebucak, 1217 m, N 37 22 E 31 29, 20.V.2008, 3 specimens.

Chorotype: SW-Asiatic (Anatolo-Caucasian + Irano-Caucasian + Irano-Anatolian).

Remarks: The species probably is rather widely distributed in Southern and Eastern parts of Turkey.

Phytoecia (Helladia) humeralis* (Waltl, 1838)**Phytoecia (Helladia) humeralis caneri* Özdikmen & Turgut, 2010**

Material examined: **Antalya prov.:** Akseki-Manavgat road, Gündoğmuş return 5th km, 396 m, N 36 46 E 31 45, 15.V.2007, 1 specimen; Akseki: Güzelsu village, 1154 m, N 36 53 E 31 50, 09.VI.2008, 1 specimen; Akseki: Mahmutlu village env., 1054 m, N 36 55 E 31 47, 19.V.2008, 1 specimen.

Chorotype: Turano-Mediterranean (Turano-Balkan).

Remarks: The species is rather widely distributed in Turkey.

***Phytoecia (Helladia) alziari* Sama, 1992**

Material examined: **Antalya prov.:** Gündoğmuş-Akseki road, 410 m, N 36 47 E 31 45, 22.IV.2008, 1 specimen.

Chorotype: E-Mediterranean (Palaestino-Cyprioto-Taurian + NE-Mediterranean).

Remarks: The species is rather widely distributed only in Southern parts of Turkey. It is the first record to Antalya province and thereby the research area.

Phytoecia (Musaria) astarte* Ganglbauer, 1886**Phytoecia (Musaria) astarte astarte* Ganglbauer, 1886**

Material examined: **Antalya prov.:** Alanya: Karapınar village, 1154 m, N 36 36 E 32 25, 14.06.2007, 1 specimen.

Chorotype: SW-Asiatic (Anatolo-Caucasian + Irano-Caucasian + Irano-Anatolian + Syro-Anatolian)

Remarks: The species probably is rather widely distributed especially in Southern parts of Turkey. It is the first record to Antalya province and thereby the research area.

***Phytoecia (Musaria) wachanrui* Mulsant, 1851**

Material examined: **Antalya prov.:** Alanya-Taşkent: Exit of Karapınar village, 1100 m, N 36 36 E 32 24, 16.V.2006, 1 specimen; **Konya prov.:** Derebucak, 1221 m, N 36 22 E 31 29, 16.V.2007, 1 specimen; Gencek- Derebucak, 1212 m, N 37 25 E 31 29, 20.V.2008, 1 specimen.

Chorotype: SW-Asiatic (Irano-Anatolian).

Remarks: The species probably is rather widely distributed especially in Southern parts of Turkey. It is the first record to Antalya, Konya provinces and thereby the research area.

Phytoecia (s.str.) caerulea* (Scopoli, 1772)**Phytoecia (s.str.) caerulea baccueti* (Brullé, 1832)**

Material examined: **Antalya prov.:** Güzelbağ-Alanya: Exit of Güzelbağ, 794 m, N 36 42 E 31 54, 15.V.2006, 3 specimens; Akseki-Manavgat road, Gündoğmuş return 5th km, 396 m, N 36 46 E 31 45, 15.V.2007, 1 specimen.

Chorotype: Turano-European.

Remarks: The species is widely distributed in Turkey.

***Phytoecia (s.str.) icterica* (Schaller, 1783)**

Material examined: **Antalya prov.:** Akseki-Gündoğmuş, 591 m, N 36 48 E 31 45, 14.V.2006, 1 specimen.

Chorotype: Turano-European.

Remarks: The species probably is widely distributed in Turkey. It is the first record to Antalya province.

***Phytoecia (s.str.) manicata* Reiche & Sauley, 1858**

Material examined: **Konya prov.:** Derebucak, 1221 m, N 36 22 E 31 29, 16.V.2007, 1 specimen.

Chorotype: E-Mediterranean (Palestino-Taurian + NE-Mediterranean).

Remarks: The species is widely distributed in Southern parts of Turkey.

Phytoecia (s.str.) pustulata (Schrank, 1776)***Phytoecia (s.str.) pustulata pustulata (Schrank, 1776)***

Material examined: **Konya prov.:** Hadim, 1569 m, N 36 58 E 32 26, 14.V.2007, 1 specimen; Bozkır: Sorkun town, 1281 m, N 37 09 E 32 08, 15.V.2007, 1 specimen; Gencek-Derebucak, 1212 m, N 37 25 E 31 29, 20.V.2008, 1 specimen.

Chorotype: Turano-European.

Remarks: The species probably is rather widely distributed in Turkey.

Phytoecia (s.str.) virgula (Charpentier, 1825)

Material examined: **Konya prov.:** Gencek- Derebucak, 1212 m, N 37 25 E 31 29, 20.V.2008, 2 specimens; Derebucak, 1217 m, N 37 22 E 31 29, 20.V.2008, 1 specimen.

Chorotype: Turano-European.

Remarks: The species probably is widely distributed in Turkey. It is the first record to Antalya province and thereby the research area.

Phytoecia (Blepsianis) vittipennis Reiche, 1877

Material examined: **Konya prov.:** Şeydişehir, 1108 m, N 37 24 E 31 54, 12.VI.2007, 1 specimen.

Chorotype: Turano-Mediterranean (Turano-Balkan).

Remarks: The species is rather widely distributed in Turkey.

Phytoecia (Opsilia) coerulescens (Scopoli, 1763)

Material examined: **Antalya prov.:** Güzelbağ-Alanya: Exit of Güzelbağ, 794 m, N 36 42 E 31 54, 15.V.2006, 2 specimens; Alanya: Güzelbağ, 860 m, N 36 43 E 31 55, 15.V.2006, 1 specimen; İbradı-Akseki road, 984 m, N 37 05 E 31 36, 20.V.2008, 4 specimens; Akseki: Güzelsu village, 1154 m, N 36 53 E 31 50, 09.VI.2008, 1 specimen; İbradı: Başlar village env., 1190 m, N 37 07 E 31 34, 10.VI.2008, 12 specimens; **Konya prov.:** 10 km to Seydişehir, Akçalar, 1127 m, N 37 30 E 31 52, 13.V.2006, 1 specimen; İbradı-Derebucak road: 12 km to Derebucak, 1213 m, N 37 18 E 31 27, 11.VI.2007, 5 specimens; Beyşehir-Akseki road: Huğlu env., 1410 m, N 37 28 E 31 37, 11.VI.2007, 8 specimens; İbradı-Derebucak road: 12 km to Derebucak, 1388 m, N 37 28 E 31 37, 12.VI.2007, 4 specimens; Bozkır: Yalnızca, 1460 m, N 37 08 E 32 15, 13.VI.2007, 2 specimens; Bozkır: Dere town, 1252 m, N 37 10 E 32 09, 13.VI.2007, 1 specimen; Hadim-Alanya road: 70 km to Alanya, 1298 m, N 36 45 E 32 27, 09.VII.2007, 4 specimens; Bozkır, 1229 m, N 37 10 E 32 14, 10.VII.2007, 3 specimens; Derebucak, 1217 m, N 37 22 E 31 29, 20.V.2008, 3 specimens; Gencek- Derebucak, 1212 m, N 37 25 E 31 29, 20.V.2008, 7 specimens; Bozkır-Hadim road: 22 km to Hadim, 1344 m, N 37 02 E 32 19, 21.V.2008, 3 specimens; Bozkır: Yalnızca village env., 1490 m, N 37 09 E 32 15, 12.VI.2008, 2 specimens; Ahırlı: Aliçerçi village env., 1213 m, N 37 14 E 32 09, 12.VI.2008, 1 specimen.

Chorotype: Palaearctic.

Remarks: The species is widely distributed in Turkey.

TRIBE AGAPANTHIINI***Calamobius filum (Rossi, 1790)***

Material examined: **Antalya prov.:** Alanya-Taşkent: Exit of Karapınar village, 1100 m, N 36 36 E 32 24, 16.V.2006, 103 specimens; Alanya: Şihlar village plateau, 1192 m, N 36 39 E 32 25, 13.V.2007, 16 specimens; Gündoğmuş, 1002 m, N 36 48 E 31 51, 16.V.2007, 7 specimens; Akseki-Manavgat road, Gündoğmuş return, 215 m, N 36 46 E 31 44, 10.VI.2007, 1 specimen; Alanya: Karapınar village, 1154 m, N 36 36 E 32 25, 14.VI.2007, 6 specimens; Alanya: Dikmetaş plateau, 1142 m, N 36 35 E 32 26, 14.VI.2007, 1 specimen; İbradı: 1300 m, N 37 08 E 31 32, 20.V.2008, 4 specimens; İbradı-Akseki road, 984 m, N 37 05 E 31 36, 20.V.2008, 4 specimens; Alanya: Karapınar village, 1154 m, N 36 36 E 32 25, 21.V.2008, 6 specimens; İbradı: Başlar village env., 1190 m, N 37 07 E 31 34, 10.VI.2008, 3 specimens; **Konya prov.:** Hadim-Bozkır road, Yazdamı village env., 1434 m, N 37 07 E 32 17, 13.VI.2007, 1 specimen; Gencek- Derebucak, 1212 m, N 37 25 E 31 29, 20.V.2008, 3 specimens; Derebucak, 1217 m, N 37 22 E 31 29, 20.V.2008, 4 specimens; Taşkent-Alanya: Çayarası district, 1336 m, N 36 38 E 32 24, 11.VI.2008, 1 specimen.

Chorotype: Turano-European-Mediterranean.

Remarks: The species is rather widely distributed especially in Western half of Turkey. It is the first record to Konya province.

***Agapanthia (Synthapsia) kirbyi* (Gyllenhal, 1817)**

Material examined: **Antalya prov.:** Gündoğmuş, 1024 m, N 36 49 E 31 57, 10.VI.2007, 2 specimens; Akseki: Güzelsu village, 1154 m, N 36 53 E 31 50, 09.VI.2008, 2 specimens; İbradı, 1008 m, N 37 05 E 31 36, 09.VI.2008, 1 specimen; İbradı: Başlar village env., 1190 m, N 37 07 E 31 34, 10.VI.2008, 1 specimen; **Konya prov.:** Bozkır: Yalnızca env., 1437 m, N 37 09 E 32 15, 13.VI.2007, 1 specimen; Gencek- Derebucak, 1212 m, N 37 25 E 31 29, 20.V.2008, 9 specimens; Hadim: Korualan town env., 1648 m, N 36 58 E 32 24, 12.VI.2008, 1 specimen.

Chorotype: Turano-European.

Remarks: The species is rather widely distributed in Turkey.

***Agapanthia (Epopetes) cynarae* (Germar, 1817)**

***Agapanthia (Epopetes) cynarae cynarae* (Germar, 1817)**

Material examined: **Konya prov.:** Beyşehir-Akseki road: Huğlu env., 1410 m, N 37 28 E 31 37, 11.VI.2007, 2 specimens; Bozkır: Yalnızca, 1460 m, N 37 08 E 32 15, 13.VI.2007, 5 specimens; Bozkır: Yalnızca env., 1437 m, N 37 09 E 32 15, 13.VI.2007, 2 specimens.

Chorotype: E-Mediterranean (NE-Mediterranean) + Turano-European (Ponto-Pannonian).

Remarks: The species probably is rather widely distributed in Turkey.

***Agapanthia (Epopetes) lateralis* Ganglbauer, 1884**

Material examined: **Antalya prov.:** Güzelbağ-Alanya: Exit of Güzelbağ, 794 m, N 36 42 E 31 54, 15.V.2006, 1 specimen; **Konya prov.:** Derebucak, 1221 m, N 36 22 E 31 29, 16.V.2007, 1 specimen; Bozkır-Hadim road: 22 km to Hadim, 1344 m, N 37 02 E 32 19, 21.V.2008, 1 specimen; Bozkır: Kozağaç, Bayboğan villages env., 1439 m, N 37 09 E 32 15, 21.V.2008, 2 specimens; Akseki: Güzelsu village, 1154 m, N 36 53 E 31 50, 09.VI.2008, 2 specimens; Bozkır: Kuruçay village, 1492 m, N 37 12 E 32 02, 20.V.2008, 3 specimens; Bozkır: Yalnızca village env., 1490 m, N 37 09 E 32 15, 12.VI.2008, 5 specimens.

Chorotype: Anatolian.

Remarks: The species is endemic to Turkey. It is widely distributed especially in Western half of Turkey.

***Agapanthia (s.str.) suturalis* (Fabricius, 1787)**

Material examined: **Antalya prov.:** İbradı-Akseki road, 984 m, N 37 05 E 31 36, 20.V.2008, 1 specimen; İbradı, 1008 m, N 37 05 E 31 36, 09.VI.2008, 1 specimen; **Konya prov.:** Seydişehir-Antalya road, 5th km, 1224 m, N 37 22 E 31 52, 10.VI.2007, 1 specimen.

Chorotype: Mediterranean.

Remarks: The species is widely distributed in Southern parts of Turkey.

DISCUSSIONS

In the research area, 83 species belong to 37 genera of 4 subfamilies are determined with the present work. A list of these taxa is presented as follows:

FAMILY CERAMBYCIDAE

SUBFAMILY PRIONINAE

TRIBE ERGATINI

***Callergates gaillardoti* (Chevrolat, 1854)**

TRIBE AEGOSOMATINI

***Aegosoma scabricorne* (Scopoli, 1763)**

TRIBE PRIONINI

***Prionus coriarius* (Linnaeus, 1758)**

Mesoprionus besikanus* (Fairmaire, 1855)*SUBFAMILY LEPTURINAE****TRIBE RHAGIINI*****Dinoptera collaris* (Linnaeus, 1758)*****Cortodera cirsii* Holzschuh, 1975*****Cortodera colchica* Reitter, 1890*****Cortodera colchica colchica* Reitter, 1890*****Cortodera discolor* Fairmaire, 1866*****Cortodera differens* Pic, 1898*****Cortodera flavimana* (Waltl, 1838)*****Cortodera rubripennis* Pic, 1891****TRIBE LEPTURINI*****Grammoptera merkli* Frivaldsky, 1884*****Vadonia bitlisiensis* Chevrolat, 1882*****Vadonia unipunctata* (Fabricius, 1787)*****Vadonia unipunctata unipunctata* (Fabricius, 1787)*****Pseudovadonia livida* (Fabricius, 1777)*****Pseudovadonia livida livida* (Fabricius, 1777)*****Stictoleptura cordigera* (Fuessly, 1775)*****Stictoleptura cordigera cordigera* (Fuessly, 1775)*****Stictoleptura excisipes* (Daniel, 1891)*****Stictoleptura fulva* (DeGeer, 1775)*****Stictoleptura gevneensis* Özdikmen & Turgut, 2008*****Stictoleptura rufa* (Brullé, 1832)*****Stictoleptura rufa rufa* (Brullé, 1832)*****Anastrangalia dubia* (Scopoli, 1763)*****Anastrangalia dubia dubia* (Scopoli, 1763)*****Anastrangalia sanguinolenta* (Linnaeus, 1760)*****Anastrangalia montana* (Mulsant & Rey, 1863)*****Anastrangalia montana montana* (Mulsant & Rey, 1863)*****Pedostrangalia (Neosphenalia) emmipoda* (Mulsant, 1863)*****Pedostrangalia (Neosphenalia) verticalis* (Germar, 1822)*****Pachytodes erraticus* (Dalman, 1817)*****Pachytodes erraticus erraticus* (Dalman, 1817)*****Rutpela maculata* (Poda, 1761)*****Rutpela maculata maculata* (Poda, 1761)*****Stenurella bifasciata* (Müller, 1776)*****Stenurella bifasciata nigrosuturalis* (Reitter, 1895)*****Stenurella melanura* (Linnaeus, 1758)****SUBFAMILY CERAMBYCINAE****TRIBE CERAMBYCINI*****Cerambyx (Cerambyx) cerdo* Linnaeus, 1758*****Cerambyx (Cerambyx) cerdo cerdo* Linnaeus, 1758*****Cerambyx (Cerambyx) miles* Bonelli, 1812*****Cerambyx (Cerambyx) welensii* (Küster, 1845)****TRIBE TRACHYDERINI*****Purpuricenus budensis* (Götz, 1783)*****Purpuricenus budensis budensis* (Götz, 1783)*****Purpuricenus dalmatinus* Sturm, 1843*****Purpuricenus desfontainei* (Fabricius, 1792)*****Purpuricenus desfontainei inhumeralis* Pic, 1891*****Purpuricenus interscapillatus* Plavilstshikov, 1937*****Purpuricenus interscapillatus nudicollis* Demelt, 1968**

TRIBE CALLICHRMATINI*Aromia moschata* (Linnaeus, 1758)*Aromia moschata ambrosiaca* (Steven, 1809)**TRIBE OBRINI***Anatolobrium eggeri* Adlbauer, 2004**TRIBE CERTALLINI***Certallum ebulinum* (Linnaeus, 1767)**TRIBE DEILINI***Deilus fugax* (Olivier, 1790)**TRIBE STENOPTERINI***Stenopterus rufus* (Linnaeus, 1767)*Stenopterus rufus syriacus* Pic, 1892*Stenopterus atricornis* Pic, 1891**TRIBE HYBODERINI***Lampropterus femoratus* (Germar, 1824)**TRIBE MOLORCHINI***Glaphyra kiesewetteri* (Mulsant & Rey, 1861)*Glaphyra kiesewetteri hircus* (Abeille de Perrin, 1881)**TRIBE CLYTINI***Plagionotus (Neoplacionotus) bobelayei* (Brullé, 1832)*Plagionotus (Echinocerus) floralis* (Pallas, 1773)*Cholorophorus dinae* Rapuzzi & Sama, 1999*Cholorophorus hungaricus* Seidlitz, 1891*Cholorophorus gratiosus* (Marseul, 1868)*Cholorophorus gratiosus sparsus* (Reitter, 1886)*Cholorophorus nivipictus* (Kraatz, 1879)*Cholorophorus sartor* (Müller, 1766)*Cholorophorus trifasciatus* (Fabricius, 1781)*Cholorophorus varius* (Müller, 1766)*Cholorophorus varius damascenus* (Chevrolat, 1854)*Clytus rhamni* Germar, 1817**SUBFAMILY LAMIINAE****TRIBE MONOCHAMINI***Monochamus galloprovincialis* (Olivier, 1795)*Monochamus galloprovincialis tauricola* Pic, 1912**TRIBE DORCADIINI***Dorcadion (Cribridorcadion) anatolicum* Pic, 1900*Dorcadion (Cribridorcadion) lohsei* Braun, 1976*Dorcadion (Cribridorcadion) scabricolle* (Dalman, 1817)*Dorcadion (C.) scabricolle caramanicum* Daniel & Daniel, 1903**TRIBE TETROPINI***Tetrops praeustus* (Linnaeus, 1758)*Tetrops praeustus anatolicus* Özdikmen & Turgut, 2008**TRIBE SAPERDINI***Saperda (Compsidia) quercus* Charpentier, 1825*Saperda (Compsidia) quercus ocellata* Abeille de Perrin, 1895

TRIBE PHYTOECIINI

- Oberea (Amaurostoma) erythrocephala* (Schrank, 1776)
Oberea (Amaurostoma) erythrocephala erythrocephala (Schrank, 1776)
Oxyliia argentata (Ménétriés, 1832)
Oxyliia argentata languida (Ménétriés, 1839)
Oxyliia duponcheli (Brullé, 1832)
Coptosia (Coptosia) bithynensis (Ganglbauer, 1884)
Phytoecia (Pilemia) hirsutula (Frölich, 1793)
Phytoecia (Pilemia) hirsutula hirsutula (Frölich, 1793)
Phytoecia (Pilemia) samii Özdikmen & Turgut, 2010
Phytoecia (Helladia) armeniaca Frivaldsky, 1878
Phytoecia (Helladia) armeniaca armeniaca Frivaldsky, 1878
Phytoecia (Helladia) humeralis (Waltl, 1838)
Phytoecia (Helladia) humeralis caneri Özdikmen & Turgut, 2010
Phytoecia (Helladia) alziari Sama, 1992
Phytoecia (Musaria) astarte Ganglbauer, 1886
Phytoecia (Musaria) astarte astarte Ganglbauer, 1886
Phytoecia (Musaria) wachanrui Mulsant, 1851
Phytoecia (s.str.) caerulea (Scopoli, 1772)
Phytoecia (s.str.) caerulea baccueti (Brullé, 1832)
Phytoecia (s.str.) icterica (Schaller, 1783)
Phytoecia (s.str.) manicata Reiche & Saulcy, 1858
Phytoecia (s.str.) pustulata (Schrank, 1776)
Phytoecia (s.str.) pustulata pustulata (Schrank, 1776)
Phytoecia (s.str.) virgula (Charpentier, 1825)
Phytoecia (Blepisanis) vittipennis Reiche, 1877
Phytoecia (Opsilia) coerulea (Scopoli, 1763)

TRIBE AGAPANTHIINI

- Calamobius filum* (Rossi, 1790)
Agapanthia (Synthapsia) kirbyi (Gyllenhal, 1817)
Agapanthia (Epopetes) cynarae (Germar, 1817)
Agapanthia (Epopetes) cynarae cynarae (Germar, 1817)
Agapanthia (Epopetes) lateralis Ganglbauer, 1884
Agapanthia (s.str.) suturalis (Fabricius, 1787)

According to the references, 65 species have been recorded from the research area. In this status, among determined species from the research area with this present work, 26 species are the first record for Konya province [*Callergates gaillardoti*; *Prionus coriarius*; *Dinoptera collaris*; *Cortodera rubripennis*; *Vadonia unipunctata*; *Pseudovadonia livida*; *Stictoleptura excisipes*; *Anastrangalia dubia*; *Anastrangalia sanguinolenta*; *Anastrangalia montana*; *Rutpela maculata*; *Cerambyx cerdo*; *Cerambyx welensii*; *Aromia moschata*; *Stenopterus atricornis*; *Neoplagonotus bobelayei*; *Cholorophorus dinae*; *Chlorophorus hungaricus*; *Cholorophorus nivipictus*; *Monochamus galloprovincialis*; *Tetrops praeustus*; *Oberea erythrocephala*; *Oxyliia duponcheli*; *Coptosia bithynensis*; *Phytoecia wachanrui*; *Calamobius filum*], 16 species are the first record for Antalya province [*Dinoptera collaris*; *Cortodera discolor*; *Vadonia bitlisiensis*; *Anastrangalia dubia*; *Pedostrangalia verticalis*; *Cerambyx miles*; *Plagionotus bobelayei*; *Cholorophorus dinae*; *Saperda quercus*; *Oxyliia duponcheli*; *Coptosia bithynensis*; *Phytoecia millefolii*; *Phytoecia astarte*; *Phytoecia wachanrui*; *Phytoecia icterica*; *Phytoecia virgula*], 6 species are the first record for Central Anatolian Region of Turkey [*Callergates gaillardoti*; *Cortodera rubripennis*; *Anastrangalia montana*; *Stenopterus atricornis*; *Cholorophorus dinae*; *Coptosia bithynensis*], 2 species are the first record for Mediterranean Region of Turkey [*Vadonia bitlisiensis*; *Pedostrangalia verticalis*]

and 40 species are the first record for the research area [*Dinoptera collaris*; *Cortodera rubripennis*; *Vadonia bitlisiensis*; *Anastrangalia dubia*; *Anastrangalia sanguinolenta*; *Pedostrangalia verticalis*; *Plagionotus bobelayei*; *Chlorophorus dinae*; *Chlorophorus hungaricus*; *Saperda quercus*; *Oxyilia duponcheli*; *Coptosia bithynensis*; *Phytoecia millefolii*; *Phytoecia astarte*; *Phytoecia wachanrui*; *Phytoecia virgula*]. 1 species, (*Cortodera differens* Pic, 1898), is the first record for Turkey. In addition to this, 2 new species (*Stictoleptura gevneensis* Özdikmen & Turgut, 2008 and *Pilemia samii* Özdikmen & Turgut, 2010) and 1 subspecies (*Tetrops praeustus anatolicus* Özdikmen & Turgut, 2008) were described from the research area. Thus, longhorned beetles fauna of the research area raised from 65 to 105.

Phenologically, the adults specimens of subfamily Prioninae were collected in July (more than August) and August of each year (Fig. 1).

The adults specimens of subfamily Lepturinae were collected in April-July (May and June more than other months) (Fig. 2).

The adults specimens of subfamily Cerambycinae were collected in April-July (May and June more than other months) (Fig. 3).

The adults specimens of subfamily Lamiinae were collected in March-August (May and June more than other months) (Fig. 4).

The all adults specimens of family Cerambycidae were collected in March-August (May and June more than other months) (Fig. 5).

According to **vertical distribution** of all species, 17 species were collected between 0-500 m, 21 species were collected between 500-1000 m, 65 species were collected between 1000-1500 m and 26 species were collected between 1500-2000 m (Fig. 6). However, some species were recorded between 0-500 m and also between 1500-2000 m. Moreover, 3 species were recorded only between 0-500 m, 3 species were recorded only between 500-1000 m, 31 species were recorded only between 1000-1500 m and 6 species were recorded only between 1500-2000 m.

Consequently, 51 % of all determined species were recorded between 1000-1500 m, 20 % of the determined species were recorded between 1500-2000 m, 16 % of the determined species were recorded between 500-1000 m and 13 % of the determined species were recorded between 0-500 m.

Zoogeographically, 4 dominant chorotypes for the research area are under consideration. These are Turano-Mediterranean (14.5 %), E-Mediterranean (13.3 %), Turano-European (13.3 %) and Anatolian (12 %) chorotypes. According to this status, the main characters of fauna of the research area are formed Mediterranean, E-European and Turanian elements with together endemic (Anatolian) elements. In addition to this, South-Western Asian species (8.4 %) make an important contribution to the fauna (Fig. 7).

* This work supported by the projects of TÜBİTAK (project number TBAG-105T329) and GAZİ UNIVERSITY (project number BAP-06/32). It is Ph. D. thesis of Semra Turgut.

Some records given in the present text were evaluated by Özdikmen & Turgut (2007), Özdikmen & Turgut (2008c), Özdikmen & Turgut (2009a,b,c,d,e).

LITERATURE CITED

- Acatay, A.** 1943. İstanbul çevresi ve bilhassa Belgrad Ormanındaki zararlı orman böcekleri, mücadeleleri ve işletme üzerine tesirleri Vol: 142, T. C. Ziraat Vekâleti Yüksek Ziraat Enstitüsü Çalışmaları, Ankara, 163 pp.
- Alkan, B.** 1946. Tarım Entomolojisi Vol: 31, T. C. Tarım Bakanlığı Ankara Yüksek Ziraat Enstitüsü Ders Kitabı, Ankara, 232 pp.
- Acatay, A.** 1948. Zararlı Orman Böcekleri, Teşhis Anahtarı Vol: 76, T. C. Tarım Bakanlığı Orman Genel Müdürlüğü Yay., İstanbul, 113 pp.
- Acatay, A.** 1961. Zararlı Orman Böcekleri, Teşhis Anahtarı Vol: 938, İstanbul Üniversitesi Yay., İstanbul, 152 pp.
- Acatay, A.** 1963. Tatbiki Orman Entomolojisi Vol: 1068, İstanbul Üniversitesi Yay., İstanbul, 169 pp.
- Acatay, A.** 1968. Zararlı Orman Böcekleri, Teşhis Anahtarı Vol: 1358, İstanbul Üniversitesi Yay., İstanbul, 153 pp.
- Adlbauer, K.** 1988. Neues zur Taxonomie und Faunistik der Bockkäferfauna der Türkei (Coleoptera, Cerambycidae), Entomofauna, 9: 257-297.
- Adlbauer, K.** 1992. Zur Faunistik und Taxonomie der Bockkäferfauna der Türkei II (Coleoptera, Cerambycidae), Entomofauna, 13: 485-509.
- Adlbauer, K.** 2004. Eine neue Obriini-Art aus der Türkei (Coleoptera: Cerambycidae). Koleopterologische Rundschau, 74: 419-421.
- Alkan, H.** 2000. Türkiye orman Cerambycidae (Insecta, Coleoptera)'lerinin tanıtımı ve Doğu Karadeniz Bölgesindeki türlerin araştırılması, Yüksek Lisans Tezi, Karadeniz Teknik Üniversitesi Fen Bilimleri Enstitüsü, Trabzon, 227 pp.
- Althoff, J. & Danilevsky, M. L.** 1997. A Check-list of longicorn beetles (Coleoptera, Cerambycoidea) of Europe. Slovensko Entomološko Društvo Štefana Michielija, Ljubljana, 64 pp.
- Bodemeyer, H. E. V.** 1900. Quer durch Klein Asien, in den Bulghar Dag; Eine Naturwissenschaftliche Studien-Reise, Coleopterologisches, 196 pp.
- Bodemeyer, H. E. V.** 1906. Beitrage zur Käferfauna von Klein Asien, Deutsche Entomologische Zeitschrift, 2: 417-437.
- Bodenheimer, F. S.** 1941. Etude sur les insectes nuisibles à l'agriculture et arboriculture et les Moyens de Lutte, Bayur Matbaası, Ankara, 347 pp.
- Bodenheimer, F. S.** 1958. Türkiye'de ziraate ve ağaçlara zararlı olan böcekler ve bunlarla savaş hakkında bir etüt, Bayur Matbaası, Ankara, 347 pp.
- Braun, W.** 1978. Die Dorcadienausbeute der Forschungsreisen von W. Heinz 1963-1977, Faunistische aufstellung, beschreibung einer neuen unterart und bemerkungen zur Systematik wenig bekannter Arten (Coleoptera, Cerambycidae), Nachrichtenblatt der Bayerischen Entomologen, 27: 101-116.
- Breuning, S.** 1962. Contribution à la connaissance des Lamiens du Laos, 2ème Partie, Bulletin de la Société Royale des Sciences Naturelles du Laos, 3: 7-10.
- Breuning, S. & Villiers, A.** 1967. Cérambycides de Turquie (2. note), L'entomologiste, 23: 59-63.
- Çanakçıoğlu, H.** 1956. Bursa ormanlarında entomolojik araştırmalar, Vol: 690, İstanbul Üniversitesi Yay., Orman Fakültesi Yay., İstanbul, pp. 9-13.
- Çanakçıoğlu, H.** 1983. Orman Entomolojisi: Özel Bölüm. Vol: 349, İstanbul Üniversitesi Orman Fakültesi Yay., İstanbul, 535 pp.
- Çanakçıoğlu, H. & Mol, T.** 1998. Orman Entomolojisi: Zararlı ve Yararlı Böcekler, Vol: 451, İstanbul Üniversitesi Orman Fakültesi, İstanbul, pp. 144-174.

- Cherepanov, A. I.** 1990. Cerambycidae of Northern Asia, Volume 1 (Prioninae, Disteniinae, Lepturinae, Aseminae), Oxonian Press Pvt. Ltd., New Delhi, 642 pp.
- Daniel, K. & Daniel, J.** 1891. Revision der mit *Leptura unipunctata* F. und *fulva* Deg. verwandten Arten, Coleopteren-Studien, 1: 1-40.
- Danilevsky, M. L. & Miroshnikov, A. I.** 1985. Timber-beetles of Caucasus (Coleoptera, Cerambycidae), a key book. Krasnodar, 419 pp.
- Danilevsky, M. L.** 2008. *Apatophysis* Chevrolat, 1860 (Coleoptera, Cerambycidae) of Russia and adjacent regions, Studies and reports of District Museum Prague-East. Taxonomical Series, 4: 7-55.
- Danilevsky, M. L.** 2010a. A Check-list of longicorn beetles (Coleoptera, Cerambycoidea) of Europe, Available from: <http://www.cerambycidae.net>.
- Danilevsky, M. L.** 2010b. Systematic list of longicorn beetles (Cerambycoidea) of the territory of the former USSR. Available from: , <http://www.cerambycidae.net>.
- Defne, M. Ö.** 1954. Batı Karadeniz Bölgesindeki gökнарların zararlı böcekleri ve mücadele metodları, Vol: 105, T. C. Tarım Bakanlığı, Orman Genel Müdürlüğü, Ankara, pp. 60-72.
- Demelt, C. V.** 1963. Beitrag zur Kenntnis der Cerambycidenfauna Kleinasiens und 13. Beitrag zur Biologie Palaearkt. Cerambyciden, sowie beschreibung einer neuen *Oberea*-Art, Entomologische Blätter, 59: 132-151.
- Demelt, C. V.** 1967. Nachtrag zur Kenntnis der Cerambyciden-Fauna Kleinasiens, Entomologische Blätter, 63: 106-109.
- Demelt, C. V. & Alkan, B.** 1962. Short information of Cerambycidae fauna of Turkey, Bitki Koruma Bülteni, 2: 49-56.
- Duman, H., Aytaç, Z. & Karavelioğulları, F. A.** 2000. Gevne Valley (Hadim-Alanya) florası, Kırsal Çevre ve Ormanlık Sorunları Araştırma Derneği, Yayın No 9, Ankara, 52 pp.
- Ekici, M.** 1971. Sedir (*Cedrus libani* Barre.) zararlı böceklerinin biyolojisi ve mücadelesi, Ormanlık Araştırma Enstitüsü Yay., Teknik Bülten Serisi No: 45, pp. 50-51.
- Erdem, R.** 1947. Sarıkamış ormanlarında entomolojik müşahedeler, Vol: 52, T. C. Tarım Bakanlığı Orman Genel Müdürlüğü Yay., Ankara, pp. 11-13.
- Erdem, R.** 1968. Ormanın faydalı ve zararlı böcekleri, İstanbul Üniversitesi Orman Fakültesi Yay., İstanbul, pp. 43-58.
- Erdem, R. & Çanakçoğlu, H.** 1977. Türkiye odun zararlıları, İstanbul Üniversitesi Orman Fakültesi Yay., İstanbul, pp. 113-134.
- Fairmaire, M. L.** 1884. Liste des Coleopteres recueillis par M. L'abbé David a Akbes (Asie-Mineure) et descriptions des especes nouvelles, Annales de la Societe Entomologique de France, Octobre (1884): 165-180.
- Fuchs, E. & Breuning, S.** 1971. Die Cerambycidenausbeute der Anatolienexpedition 1966-67 des Naturhistorischen Museums, Wien, Annalen Naturhistorischen Museum Wien, 75: 435-439.
- Ganglbauer, L.** 1884. Bestimmungs-Tabellen Der Europaeischen Coleopteren. VIII. Cerambycidae, Verhandlungen Der Kaiserlich-Kongiglichen Zoologisch.-Botanischen Gesellschaft in Wien, 33: 437-586.
- Ganglbauer, L.** 1885. Neue und Weniger bekannte Longicornier des Paläarktischen Faunengebietes, Verhandlungen Der Kaiserlich-Kongiglichen Zoologisch.-Botanischen Gesellschaft in Wien, 33: 515-524.
- Gfeller, W.** 1972. Cerambycidae (Coleoptera) der Türkei-Persienexpedition 1970 der Herren Dr. H. C. W. Wittmer und U. V. Botmer, Mitteilungen der Entomologischen Gesellschaft Basel, 22: 1-8.
- Gül-Zümreoğlu, S.** 1972. Böcek ve genel zararlılar kataloğu (1928-1969), T. C. Tarım Bakanlığı Yay., Bornova, İzmir, 119 pp.

Gül-Zümreoğlu, S. 1975. Ege Bölgesi teke böcekleri (Cerambycidae-Coleoptera) türleri, taksonomileri, konukçuları ve yayılış alanları üzerine araştırmalar Vol: 28, T. C. Gıda, Tarım ve Hayvancılık Bakanlığı, İstiklal Matbaası, İzmir, 208 pp.

Hellrigl, K. 1971. Die bionomie der Europäischen *Monochamus*-Arten und ihre bedeutung für die Forst- und Holzwirtschaft, Redia, 52: 367-510.

Heyden, L. 1888. Neue und interessante Coleopteren aus Malatia in Mesopotamien, Deutsche Entomologische Zeitschrift, 32: 72-78.

Holzschuh, C. 1975. Neue Westpalaearktische Bockkafer aus den Gattungen *Cortodera*, *Vadonia* und *Agapanthia* (Coleoptera: Cerambycidae), Zeitschrift der Arbeitsgemeinschaft Oesterreich Entomologen, 26: 77-90.

Holzschuh, C. 1980. Revision einer Cerambycidenausbeute des Naturhistorischen Museums Wien (Coleoptera), Annalen des Naturhistorischen Museums in Wien, 83: 573-574.

Holzschuh, C. 2003. Beschreibung von 72 neuen Bockkäfern aus Asien, vorwiegend aus China, Indien, Laos und Thailand (Coleoptera, Cerambycidae), Entomologica Basiliensia, 25: 147-241.

Hoskovec, M. & Rejzek, M. 2010. Cerambycidae, Longhorned Beetles (Cerambycidae) of the West Palaeartic Region. Available from: <http://www.cerambyx.uochb.cz/>.

İren, Z. & Ahmed, M. K. 1973. Microlepidoptera and pests of fruit-trees in Turkey, Bitki Koruma Bülteni, Ankara, 1: 41-42.

İyriboz, N. 1938. Bağ Hastalıkları, T. C. Ziraat Vekaleti Neşriyatı Umumi Sayı: 323, Ankara, pp. 109-111.

İyriboz, N. 1940. İncir Hastalıkları, T. C. Ziraat Vekaleti Neşriyatı Umumi Sayı: 489, İzmir, pp. 44-47.

İyriboz, N. 1931. Untersuchungen über möhrenblatt-sauger (*Trioza viridula*), Z. Ang. Ent., 18: 175-188.

Jenis, I. 2001. Long-horned beetles, Vesperidae & Cerambycidae of Europe I, Atelier Regulus, Zlin, Czechoslovakia, 333 pp.

Kanat, M. 1998. Kahramanmaraş ormanlarında önemli zararlı böceklerin araştırılması, Yüksek Lisans Tezi, Karadeniz Teknik Üniversitesi Fen Bilimleri Enstitüsü, Trabzon, pp. 41-127.

Lobanov, A. L., Danilevsky, M. L. & Murzin, S. V. 1981. Systematic list of longicorn beetles (Coleoptera, Cerambycidae) of the USSR. 1, Revue D'entomologie, 60: 784-803.

Lodos, N. 1998. Türkiye Entomolojisi 6 (Genel, Uygulamalı ve Faunistik), Ege Ü. Ziraat Fak. Yayınları No: 529, İzmir, 300 pp.

Nizamhoğlu, K. 1957. Türkiye meyve ağacı zararlıları ve mücadelesi, Koruma Tarım İlaçları A. Ş. Neşriyatı, 5: 134, 146, 153-154.

Ohbayashi, N. & Niisato, T. 2007. Longicorn beetles of Japan, Tokai University Press, Kanagawa, Japan, 880 pp.

Önalp, B. 1988. Taxonomic researches on *Agapanthia* Serville, 1835 species (Coleoptera, Cerambycidae: Lamiinae) I, H. Ü. Eğitim Fakültesi Dergisi, 3: 257-295.

Önalp, B. 1989. Taxonomic researches on *Agapanthia* Serville, 1835 species (Coleoptera, Cerambycidae: Lamiinae) II, H. Ü. Eğitim Fakültesi Dergisi, 4: 197-234.

Önalp, B. 1990. Systematic researches on *Dorcadion* Dalman, 1817 species in Turkey (Coleoptera, Cerambycidae: Lamiinae) I, H. Ü. Eğitim Fakültesi Dergisi, 5: 57-102.

Önder, F., Karsavuran, Y., Tezcan, S. & Önder, P. 1987. Türkiye'de tarım, orman ve evcil hayvanlarda hayvansal kökenli zararlı ve yaralı türlerin bilimsel ve Türkçe isimleri, T. C. Tar. Orm. Köyişl. Bakanlığı, Mesleki Yayınlar No: 8, 120 pp.

Öymen, T. 1987. The forest Cerambycidae of Turkey. İ. Ü. Forest Faculty, İstanbul, 146 pp.

Özbek, H. 1978. *Hylotrupes bajulus* (L.) Serville in Erzurum and the Near, and some others longhorn beetles, Atatürk Üniversitesi Ziraat Fakültesi Dergisi, 9: 31-44.

- Özer, M. & Duran, M.** 1968. Orta Anadolu'da yonca ve korungalara zarar yapan bazı böcek türleri üzerinde ilk çalışmalar. Ankara Üniversitesi Ziraat Fakültesi Yayınları, pp. 34-38.
- Özdikmen, H.** 2003a. The genus *Cortodera* Mulsant, 1863 (Cerambycidae: Coleoptera) in Turkey, *Phytoparasitica*, 31: 433-441.
- Özdikmen, H.** 2003b. Check-list of the genus *Cortodera* Mulsant, 1863 (Coleoptera: Cerambycidae) in Turkey with two new records, *Acta Entomologica Slovenica*, 11: 183-188.
- Özdikmen, H.** 2006. Contribution to the knowledge of Turkish longicorn beetles fauna (Coleoptera: Cerambycidae), *Munis Entomology & Zoology*, 1: 71-90.
- Özdikmen, H.** 2007. The longicorn beetles of Turkey (Coleoptera: Cerambycidae) Part I - Black Sea Region, *Munis Entomology & Zoology*, 2: 179-422.
- Özdikmen, H.** 2008. The longicorn beetles of Turkey (Coleoptera: Cerambycidae) Part II – Marmara Region, *Munis Entomology & Zoology*, 3: 7-152.
- Özdikmen, H. & Çağlar, Ü.** 2004. Contribution to the knowledge of longhorned beetles (Coleoptera, Cerambycidae) from Turkey, Subfamilies Prioninae, Lepturinae, Spondylidinae and Cerambycinae, *J. Ent. Res. Soc.*, 6: 39-69.
- Özdikmen, H. & Demir, H.** 2006. Notes on longicorn beetles fauna of Turkey (Coleoptera: Cerambycidae), *Munis Entomology & Zoology*, 1: 157-166.
- Özdikmen, H. & Demirel, E.** 2005. Additional notes to the knowledge of longhorned beetle collection from Zoological Museum of Gazi University, Ankara, Turkey (GUZM) for Turkish fauna (Coleoptera, Cerambycidae), *J. Ent. Res. Soc.*, 7: 13-38.
- Özdikmen, H. & Hasbenli, A.** 2004. Contribution to the knowledge of longhorned beetles (Coleoptera, Cerambycidae) from Turkey, Subfamily Lamiinae, *J. Ent. Res. Soc.*, 6: 25-49.
- Özdikmen, H. & Okutaner, A. Y.** 2006. The longhorned beetles fauna (Coleoptera, Cerambycidae) of Kahramanmaraş province, *G. U. Journal of Science*, 19: 77-89.
- Özdikmen, H., Özdemir, Y. & Turgut, S.** 2005. Longhorned beetles collection of the Nazife Tuatay Plant Protection Museum, Ankara, Turkey (Coleoptera, Cerambycidae), *J. Ent. Res. Soc.*, 7: 1-33.
- Özdikmen, H. & Şahin, Ö.** 2006. İç Anadolu Ormancılık Araştırma Müdürlüğü, Entomoloji Müzesi (Türkiye, Ankara) teke böcekleri koleksiyonu (Coleoptera, Cerambycidae), *G. U. Journal of Science*, 19: 1-8.
- Özdikmen, H. & Turgut, S.** 2006a. A zoogeographical review of Spondylidinae in Turkey (Coleoptera: Cerambycidae), *Munis Entomology & Zoology*, 1: 279-288.
- Özdikmen, H. & Turgut, S.** 2006b. An evaluation on the known taxa of Necdalinae and Apatophyseinae from Turkey (Coleoptera: Cerambycidae), *Munis Entomology & Zoology*, 1: 199-204.
- Özdikmen, H. & Turgut, S.** 2006c. The genus *Mesosa* Latreille, 1829 (Coleoptera, Cerambycidae) in Turkey with a new record, *Entomological News*, 117: 309-312.
- Özdikmen, H. & Turgut, S.** 2007. A review of the genus *Musaria* Thomson, 1864 (Coleoptera: Cerambycidae) in Turkey with zoogeographical remarks, *Munis Entomology & Zoology*, 2: 511-516.
- Özdikmen, H. & Turgut, S.** 2008a. A new species of the genus *Stictoleptura* Casey, 1924 from Turkey (Coleoptera: Cerambycidae: Lepturinae), *Munis Entomology & Zoology*, 3: 548-553.
- Özdikmen, H. & Turgut, S.** 2008b. The genus *Tetrops* Stephens, 1829 with a new subspecies, *Tetrops praeustus anatolicus* ssp. n. from Turkey (Coleoptera: Cerambycidae: Lamiinae), *Munis Entomology & Zoology*, 3: 621-635.
- Özdikmen, H. & Turgut, S.** 2008c. A new *Cortodera* species for Turkey (Coleoptera: Cerambycidae: Lepturinae). *Munis Entomology & Zoology* 3 (2): 596-605.
- Özdikmen, H. & Turgut, S.** 2009a. On Turkish *Cerambyx* Linnaeus, 1758 with zoogeographical remarks (Coleoptera: Cerambycidae: Cerambycinae), *Munis Entomology & Zoology*, 4: 301-319.

- Özdikmen, H. & Turgut, S.** 2009b. A synopsis of Turkish *Clytus* Laicharting, 1784 and *Sphegoclytus* Sama, 2005 with zoogeographical remarks (Coleoptera: Cerambycidae: Cerambycinae), *Munis Entomology & Zoology*, 4: 353-370.
- Özdikmen, H. & Turgut, S.** 2009c. A synopsis of Turkish Vesperinae Mulsant, 1839 and Prioninae Latreille, 1802 (Coleoptera: Cerambycidae). *Munis Entomology & Zoology*, 4: 402-423.
- Özdikmen, H. & Turgut, S.** 2009d. A short review on the genus *Plagionotus* Mulsant, 1842 (Coleoptera: Cerambycidae: Cerambycinae). *Munis Entomology & Zoology*, 4: 457-469.
- Özdikmen, H. & Turgut, S.** 2009e. A synopsis of Turkish *Chlorophorus* Chevrolat, 1863 with zoogeographical remarks (Coleoptera: Cerambycidae: Cerambycinae). *Munis Entomology & Zoology*, 4: 577-595.
- Özdikmen, H. & Turgut, S.** 2010a. An overview on the Palaearctic subgenus *Phytoecia* (*Pilemia*) Fairmaire, 1864 with a new species *Phytoecia* (*Pilemia*) *samii* sp. n. from Turkey (Coleoptera: Cerambycidae: Lamiinae). *Munis Entomology & Zoology*, 5 (1): 90-108.
- Özdikmen, H. & Turgut, S.** 2010b. An overview on the W-Palaearctic subgenus *Phytoecia* (*Helladia*) Fairmaire, 1864 with a new subspecies *Phytoecia* (*Helladia*) *humeralis caneri* ssp. n. from Turkey (Coleoptera: Cerambycidae: Lamiinae). *Munis Entomology & Zoology*, 5 (2): 317-343.
- Perissinotto, A. & Luchini, S. R.** 1966. Coleotteri raccolti nel vicino E Medio Oriente Nota I. *Dorcadion* Dalm. (Coleoptera, Cerambycidae), *Bollettino Della Societa Entomologica Italiana*, 96: 147-149.
- Pic, M.** 1892. [Note] Séance Du 14 Décembre 1892, *Ann. Soc. Ent. Fr.*, 61: CCUX-CCLX.
- Rejzek, M. & Hoskovec, M.** 1999. Cerambycidae of Nemrut Dağı National Park (Anatolia, South-East Turkey), *Biocosme Mésogéen*, Nice, 15: 257-272.
- Rejzek, M., Sama, G. & Alziar, G.** 2001. Host plants of several herb-feeding Cerambycidae mainly from East Mediterranean Region (Coleoptera: Cerambycidae), *Biocosme Mésogéen*, Nice, 17 : 263-294.
- Sabbadini, A. & Pesarini, C.** 1992. Note su *Purpuricenus budensis* (Goeze) e specie affini, *Bollettino della Società Italiana di Entomologia*, Genova, 124: 55-64.
- Sama, G.** 1982. Contributo allo studio dei Coleotteri Cerambycidae di Grecia e Asia Minore, *Fragmenta Entomologica*, Roma, 16: 205-227.
- Sama, G.** 1994a. Note sulla nomenclatura dei Cerambycidae della regione Mediterranea. II. Revisione di alcuni tipi di Kraatz, V. Heyden, e Stierlin. (Coleoptera, Cerambycidae), *Lambillionea*, 94: 321-334.
- Sama, G.** 1994b. Cerambycidae nuovi o poco noti del Mediterraneo Orientale (Coleoptera, Cerambycidae), *Lambillionea*, 94: 9-13.
- Sama, G.** 1994c. Descrizione di *Parmena striatopunctata* n. sp. della Turchia Nord Orientale e note sul genere *Delagrangues* Pic, 1892 (Coleoptera, Cerambycidae), *Lambillionea*, 94: 553-558.
- Sama, G.** 1995. Note sul Molorchini. II. I generi *Glaphyra* Newman, 1840 e *Nathrioglaphyra* nov. (Coleoptera, Cerambycidae), *Lambillionea*, 95: 363-390.
- Sama, G.** 1996a. Contribution a la connaissance des Longicornes de Grece et D'asie Mineure (Coleoptera, Cerambycidae), *Biocosme Mésogéen*, 12 : 101-116.
- Sama, G.** 1996b. Note preliminaire pour une revision du genre *Cortodera* Mulsant, 1863 (Coleoptera-Cerambycidae), avec la description de deux especes nouvelles, *Biocosme Mésogéen*, 13: 107-114.
- Sama, G.** 2002. Atlas of the Cerambycidae of Europe and the Mediterranean Area, Vol. I, Kabourek, Zlin, 173 pp.
- Sama, G. & Rapuzzi, P.** 1999. Cerambycidae nuovi o poco noti di Turchia e Medio Orientis (Coleoptera, Cerambycidae), *Lambillionea*, 99: 461-468.
- Sama, G. & Rapuzzi, P.** 2000. Note preliminaire pour une faune des Cerambycidae du Liban (Coleoptera, Cerambycidae), *Lambillionea*, 100: 7-23.

- Schmitschek, E.** 1944. Forstinsekten der Türkei und ihre umwelt grundlagen der Türkischen Forstentomologie, Volk Und Reich Verlag, Prag, pp. 125-141.
- Sekendiz, O. A.** 1974. Türkiye hayvansal kavak zararlıları üzerine araştırmalar. K. T. Ü. Orman Fakültesi Yayın No: 3, Trabzon, 194 pp.
- Sekendiz, O. A.** 1981. Doğu Karadeniz Bölümünün önemli teknik hayvansal zararlıları üzerine araştırmalar, K. T. Ü. Orman Fakültesi Yayınları No: 12, Trabzon, 114 pp.
- Semenov, A.** 1900. Coleoptera Asiatica Nova, Horae Societatis Entomologicae Rossicae, 34: 303-334.
- Švácha, P. & Danilevsky, M. L.** 1986. Cerambycoid larvae of Europe and Soviet Union (Coleoptera, Cerambycoidea), Part I., Acta Universitatis Carolinae–Biologica, 30: 1-186.
- Švácha, P. & Danilevsky, M. L.** 1988. Cerambycoid larvae of Europe and Soviet Union (Coleoptera, Cerambycoidea). Part III, Acta Universitatis Carolinae-Biologica, 32: 1-205.
- Tauzin, P.** 2000. Complement a l'inventaire des Coleopteres Cerambycidae de Turquie, L'entomologiste, 56: 151-153.
- Tezcan, S. & Rejzek, M.** 2002. Longhorn beetles (Coleoptera: Cerambycidae) recorded in cherry orchards in Western Turkey, Zoology in the Middle East, 27: 91-100.
- Tosun, İ.** 1975. Akdeniz Bölgesi iğne yapraklı ormanlarında zarar yapan böcekler ve önemli türlerin parazit ve yırtıcıları üzerine araştırmalar. Orman Genel Müdürlüğü Yay. Sıra No: 612 Seri No: 24, İstanbul, 201 pp.
- Tuatay, N., Kalkandelen, A. & Aysev, N.** 1972. Bitki Koruma Müzesi Böcek Kataloğu (1961-1971), T. C. Tarım Bakanlığı, Ankara, pp. 53-55.
- Tozlu, G.** 2001a. Studies on species belonging to Elateridae, Buprestidae, Cerambycidae, Curculionidae (Coleoptera) and Diprionidae (Hymenoptera) damaging on *Pinus sylvestris* L. in Sarıkamış (Kars) forests, Türkiye Entomoloji Dergisi, 25: 194-204.
- Tozlu, G.** 2001b. Determination of damaging insect species on *Populus tremula* L. in Sarıkamış (Kars) and studies on biology of some important species, Türkiye Entomoloji Dergisi, 25: 133-146.
- Tozlu, G., Rejzek, M. & Özbek, H.** 2002. A contribution to the knowledge of Cerambycidae (Coleoptera) fauna of Turkey. Part I: Subfamilies Prioninae to Cerambycinae, Biocosme Mésogéen, 19: 55-94.
- Tozlu, G., Rejzek, M. & Özbek, H.** 2003. A contribution to the knowledge of Cerambycidae (Coleoptera) fauna of Turkey Part II: Subfamily Lamiinae, Biocosme Mésogéen, 19: 95-110.
- Ulusoy, R., Vatanserver, G. & Uygun, N.** 1999. The cherry pests, their natural enemies and observations on some important species in Ulukışla (Niğde) and Pozantı (Adana) provinces of Turkey, Türkiye Entomoloji Dergisi, 23: 111-120.
- Villiers, A.** 1959. Cérambycides de Turquie, L'entomologiste, 15: 7-11.
- Villiers, A.** 1967. Coléoptères Cérambycides de Turquie (1. partie), L'entomologiste, 23: 18-22.
- Winkler, A.** 1924-1932. Catalogus Coleopterorum Regionis Palaearcticae, Verlag Von Albert Winkler, pp. 1135-1226.
- Yüksel, B.** 1996. Doğu Ladin ağaçlarında zararlı böcekler ve predatörleri ve parazit türler-1 (Zararlı Böcekler), Yüksek Lisans Tezi, Karadeniz Teknik Üniversitesi Fen Bilimleri Enstitüsü, Trabzon, 222 pp.



Map1. The research area

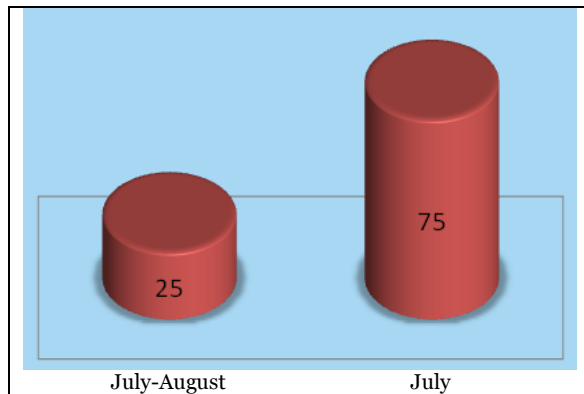


Figure 1. Phenology of the adults specimens of Prioninae (%).

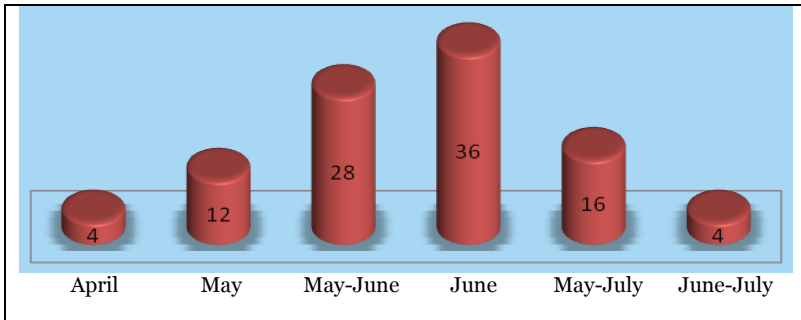


Figure 2. Phenology of the adults specimens of Lepturinae (%).

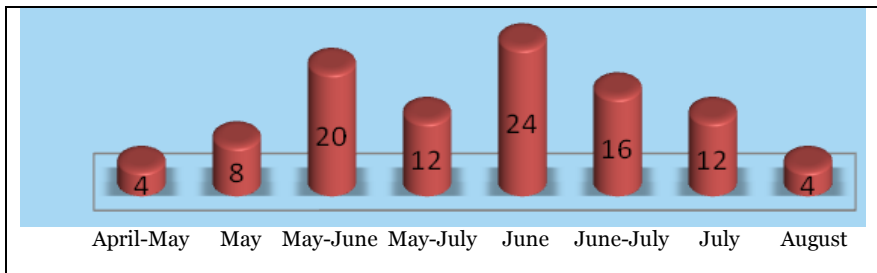


Figure 3. Phenology of the adults specimens of Cerambycinae (%).

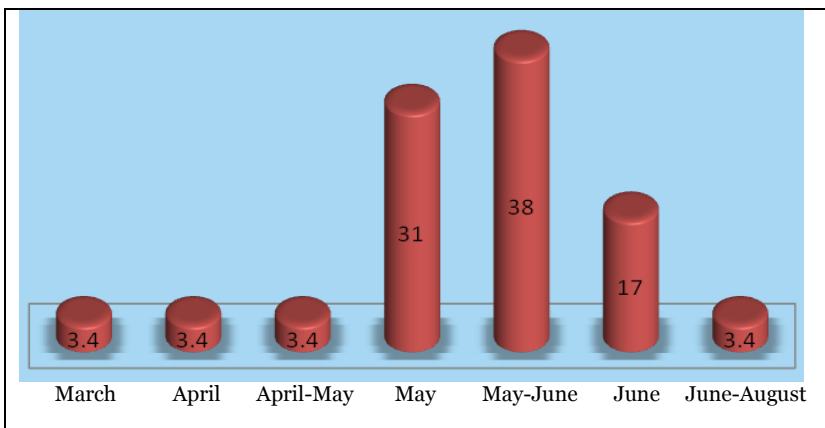
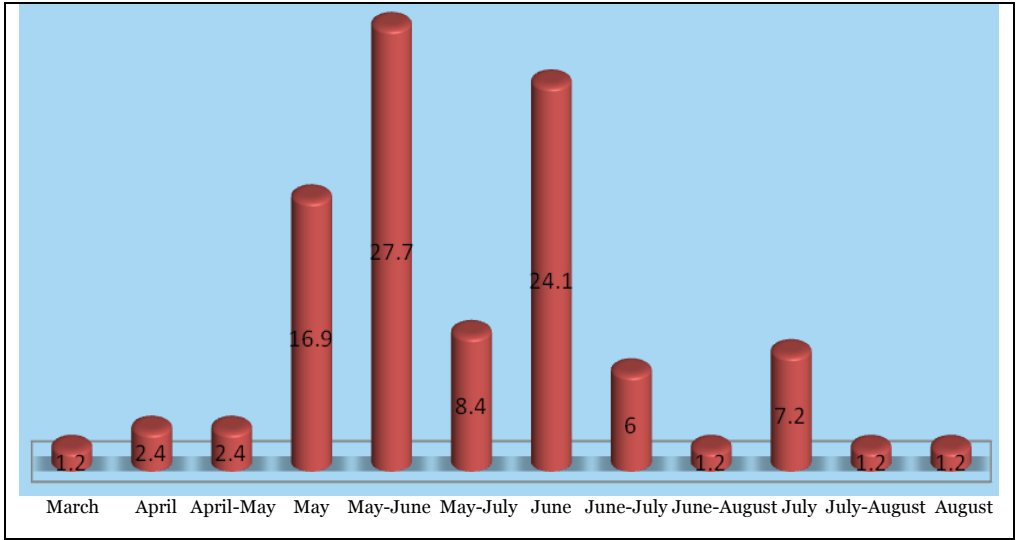


Figure 4. Phenology of the adults specimens of Lamiinae (%).



Şekil 5. Cerambycidae erginlerinin fenolojik dağılımı (%).

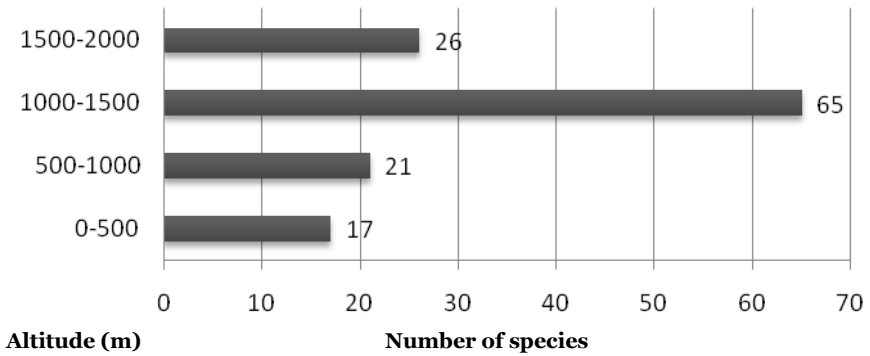


Figure 6. Vertical distribution of Cerambycid species.

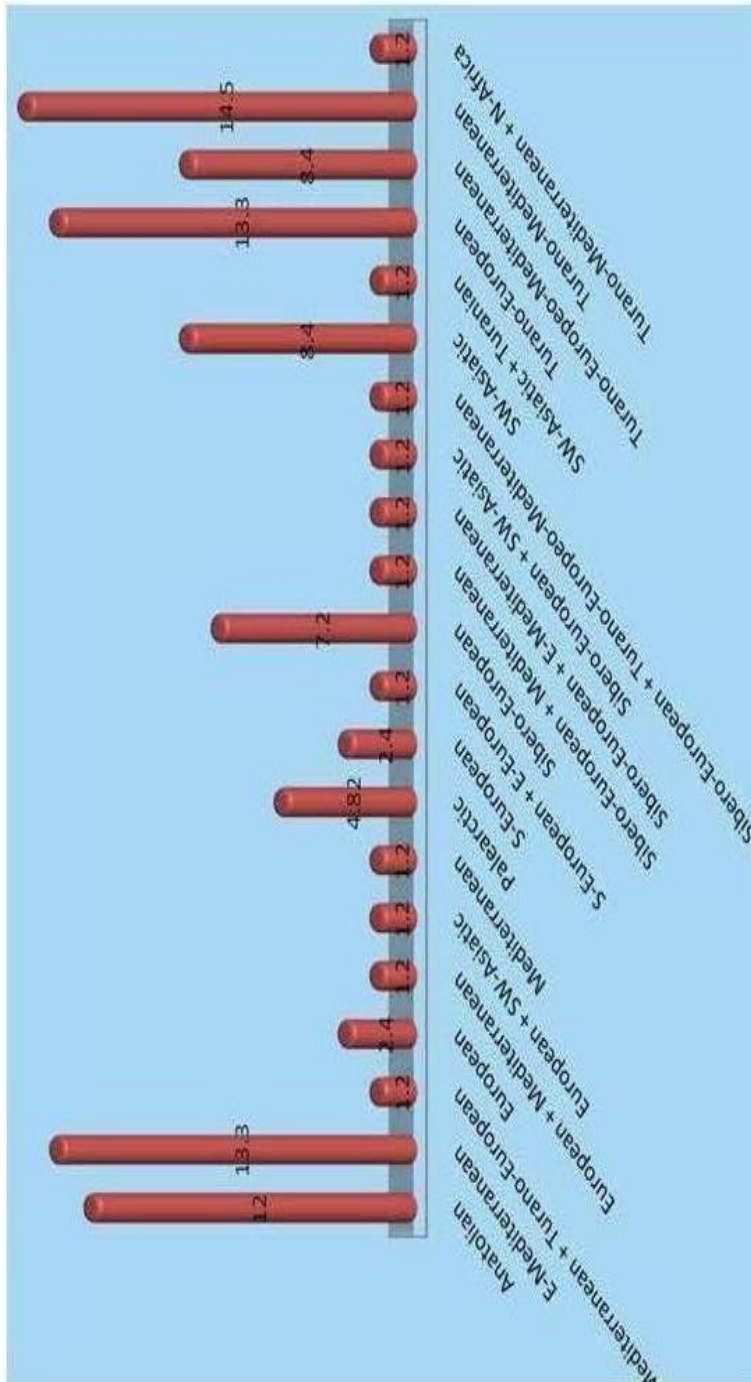


Figure 7. Chorotype of Cerambycidae species (%)