

A NEW SPECIES OF *LAMPOTERMA* (HYMENOPTERA: PTEROMALIDAE) FROM ERZURUM, TURKEY

Mikdat Doğanlar*

* Honorary Professor, Biological Control Research Station, Adana, TURKEY. E-mail: mikdoganlar@yahoo.com.tr

[Doğanlar, M. 2018. A new species of *Lampoterma* (Hymenoptera: Pteromalidae) from Erzurum, Turkey. *Munis Entomology & Zoology*, 13 (2): 386-394]

ABSTRACT: In this paper two new parasitoid *Lampoterma* (Hymenoptera: Chalcidoidea: Pteromalidae) species, *L. yoncae* sp. nov., *L. ceutorhynchae* sp. nov., and its twin *L. viride* (Thomson) were described from Erzurum, Oğuzeli, Gaziantep, Turkey. An identification key for the species of the genus was provided. *Lampoterma gympicum* Boucek, 1988 was transferred from *Lampoterma* to *Stinoplus* (new combination).

KEY WORDS: New species, Chalcidoidea, Erzurum, Turkey

Lampoterma (Hymenoptera: Chalcidoidea: Pteromalidae) was described by Graham (1956) with its type species being *Metastenus viridis* Thomson, 1876, by original designation. Later, Graham (1969) studied on the Palearctic species of the genus and described another new species from Europe. Boucek (1988) described a new species from Australia. Noyes (2017) listed 4 world species of *Lampoterma*, 2 of them from Europe, one from North America and other from Australia, gave their synonyms, distributions and literature lists. Up to now, only one species of *Lampoterma ceutorhynchae* sp. nov., as *L. viride* (Thomson) has been recorded from Turkey by Doğanlar (1985) and Öncüer (1991). Recently, the specimens of *Lampoterma* spp., collected from Turkey, were described as new species for science. An identification key for the species of the genus was provided.

MATERIAL AND METHOD

The type specimens of the new species were obtained by rearing from galls of *Ceutorhynchus assimilis* Payk. (Coleoptera: Curculionidae) on *Lepidium draba* L., and swept from field of *Medicago sativa* L. infested by *Hypera postica* (Gyllenhal, 1813) in Erzurum and Oğuzeli, Gaziantep, Turkey. Morphological terminology follows Graham (1969). The left antenna of the holotype was slide-mounted in Canada balsam. The holotype of the new species was deposited in Insect Museum of Biological Control Station, Yüreğir, Adana, Turkey (IMBC). Photographs of diagnostic characters of the new species were taken by using of Leica DM 500 microscopes with a digital Leica ICC 50 camera attached to it.

RESULTS AND DISCUSSION

LAMPOTERMA Graham, 1956

Metastenus Thomson, 1876a: 205 [nec Walker, 1834].

Lampoterma Graham, 1956: 256. Type-species: *Metastenus viridis* Thomson, 1876, by original designation.

Diagnosis: Head and thorax reticulate; anterior margin of clypeus truncate, gena strongly converging and fairly long in facial view and head often thin in lower half; occiput without transverse fold; antennae inserted below centre of face;

antennal flagellum slender, each funicular segment with one row of linear sensillae; pronotum distinctly narrower than mesoscutum, dorsally rounded, sloping downwards straight from hind margin, without any differentiation of collar. Fore wing with basal cell having scattered hairs distally; postmarginal vein distinctly longer than the marginal vein, curved; marginal vein thinner, about ten times as long as its medial breadth; stigmal vein not capitate; propodeum short, medially one quarter to one third as long as the scutellum, the surface including that of the shallow spiracular sulci shiny, alutaceous to nearly smooth, plicae absent or with plicae represented only by foveae at the base of the propodeum; with spiracles small, circular to shortly oval, separated by nearly or quite their own length from the hind margin of the metanotum; between the spiracles very shiny, smooth or weakly alutaceous; female gaster longer and acuminate; Tip of hypopygium usually situated in or before the middle of the gaster; femora mainly, coxae and gaster entirely dark.

I have not seen the types but by examining the their descriptions the *Lampoterma gypsicum* Boucek, 1988, especially in having forewing with marginal vein 1.2x as long as postmarginal vein and propodeum short, medially one third as long as the scutellum, was transferred to the genus *Stinoplus* Thomson 1878 which were fits definition given for the characters by Graham (1969), i.e. Postmarginal vein of fore wing (Text-figs. 563, 564 of Graham, 1969) slightly shorter than, or at most as long as, the marginal vein, straight or nearly so; marginal vein slightly thickened, seven to nine times as long as broad. Tibiae, sometimes also femora, occasionally some of the coxae, yellow; gaster sometimes reddish basally.

Stinoplus gypsicum (Boucek, 1988). Australia: Queensland. (**New combination**).

Lampoterma gypsicum Boucek, 1988: 430. New species, Holotype female, ANIC. The new combination is a result of the study on the description of the species and illustrations of female head and antenna given by Boucek, (1988).

Key to species of *Lampoterma* Graham, 1956

- 1- Antennae with 2 anelli and 6 funicular segments; Mandibles small, the left one with three, the right with four, teeth; combined length of pedicellus and flagellum fully equal to, or slightly greater than, the breadth of the head; flagellum slightly clavate, the funicular segments only slightly transverse; clava slightly shorter than the three preceding funicular segments together; Fore wing with costal cell bare on its upper surface except for a short row of hairs at its apex, its lower surface with one complete row of hairs and two other partial rows in its distal third; basal vein pilose, basal cell (upper surface) with several hairs in the distal third, but open below; speculum more or less open below; costal cell about 9.2x as long as width and 1.6x marginal vein; marginal vein 1.33x stigmal vein, and 0.8x as long as postmarginal vein; stigmal vein 0.6x as long as post marginal vein; antenna with scape hardly three quarters the length of an eye, 4.17x as long as width; pedicellus about 1.7 times as long as broad ; combined length of pedicellus and flagellum about equal to, or slightly greater than, the breadth of the head ; funicle proximally slightly stouter than the pedicel, becoming very slightly thicker distad, its segments slightly to distinctly transverse; anelli 2 segmented, total length of anelli plus F1 slightly shorter than pedicel; F1 1.6x, F2 1.5x, F3-F5 1.3x, F6 1.43x as wide as length; club hardly more than twice as long as broad, slightly shorter than the three preceding funicular segments together.....
*L. bianellatum* Graham, 1969
- Antennae with 3 anelli and 5 funicular segments; both mandibles with 3 teeth; combined length of pedicellus and flagellum less than breadth of head; flagellum strongly clavate, all the funicular segments strongly transverse; clava slightly longer than the three preceding funicular segments together.....2

2- Basal cell of forewing closed and with many seta in apical half; costal cell bare on both surface except for a short row of hairs at its apex; speculum having lower side with densely hairy; costal cell about 12.2x as long as width and 1.73x marginal vein; Forewing disc having dense setae on both sides from beginning of marginal vein to tip of wing; marginal vein 1.16x stigmal vein, and 0.88x as long as postmarginal vein; stigmal vein 0.64x as long as post marginal vein; Antenna with scape 4.8x as long as width; pedicel about 1.9x as long as broad; 3rd anellus almost as long as 0.62x preceding ones; total length of anelli plus F1 as long as pedicel; F1 1.3x, F2-F3 1.4x, F4 1.5x, F5 1.7x as wide as length; club 2.1x as long as width.....*L. viride* (Thomson) Graham, 1956

-- Basal cell of forewing bare, basal vein with 4-5 setae; costal cell bare on its upper surface except for a short row of hairs at its apex; speculum broad, almost reaching whole length of marginal vein, open below; marginal vein 1.38x stigmal vein, and 0.75x as long as postmarginal vein; stigmal vein 0.65x as long as post marginal vein; antenna with scape 0.75x the length of an eye, 5.0x as long as width.....3

3- Forewing with costal cell its lower surface with one complete row of hairs and two other partial rows in its distal third; speculum having lower side with densely hairy; costal cell about 10x as long as width and 2.17x marginal vein; forewing disc having dense setae on both sides from beginning of marginal vein to tip of wing; antenna with pedicel about 1.3x as long as broad; combined length of pedicel and flagellum about 0.76x breadth of the head; 3rd anellus almost as long as 2 preceding ones, total length of anelli plus F1 about 1.5x as long as pedicel; F1 1.43x, F2-F5 1.7x as wide as length; club 1.83x as long as width.....

.....*L. ceutorhynchae* nov. sp.
 -- Forewing with costal cell its lower surface with one complete row of hairs and one other partial short row in its distal third; speculum having lower side bare; costal cell about 8x as long as width and 2.13x marginal vein. Forewing disc having sparse setae on upper side; with lower side almost completely bare; antenna with pedicel about 1.9x as long as broad; combined length of pedicel and flagellum about 0.7x breadth of the head; anelli almost in equal size, total length of anelli plus F1 about as long as pedicel; F1 1.5x, F2 1.25x, F3 1.37x, F4 1.83; F5 2x as wide as length; club 2.1x as long as width.....*L. yoncae* nov. sp.

***Lampoterma bianellatum* Graham, 1969**

Holotype Fem. ENGLAND : Oxfordshire, Otmoor, 21.viii.1955, on flowers of *Angelica sylvestris* L. (Graham), in Hope Department, University Museum, Oxford. Paratypes: Same data as holotype, 1 Fem, 21.viii.1955, 1 female, 8 .ix.1956 ; Berkshire, Wytham, 1 male, 19.vii.1953, on flowers of *Angelica sylvestris* L. (Graham), in Graham collection. All taken in marshy places. IRELAND: Antrim, Selshan, 1 fem, 26.vi.1957, taken in marshy ground by the shore of Lough Neagh (Graham), in Graham collection.

Diagnosis: Both sexes: Antenna (female, Text-fig. 558, male, Text-fig. 559 of Graham, 1969) with two anelli and six funicular segments; combined length of pedicellus and flagellum fully equal to, or slightly greater than, the breadth of the head ; flagellum slightly clavate, the funicular segments only slightly transverse ; clava slightly shorter than the three preceding funicular segments together; left mandible with three teeth, right mandible with four.

Biology: Unknown.

***Lampoterma viride* (Thomson, 1876)**

(Fig. 3c); Figs. 419 and 420 of Boucek & Rasplus (1991)

Metastenus viridis Thomson, 1875 (1876): 206, fem.

Lampoterma viride (Thomson) Graham, 1956: 256. Type material. Syntypes, 6 fem. Lectotype labelled " Scor " [Scanor].

Diagnosis: Female: Antenna with three anelli and five funicular segments; combined length of pedicellus and flagellum less than breadth of head; flagellum strongly clavate, all the funicular segments strongly transverse; clava slightly longer than the three preceding funicular segments together; both mandibles with three teeth. Length 2.0 mm.

Male: similar to female, excepts as follows: combined length of pedicellus and flagellum barely equal to the breadth of the head; all the funicular segments slightly transverse; clava about as long as the three preceding funicular segments together. Length 2.0 mm.

Description based on figures 419 and 420 of Boucek & Rasplus (1991):

Head (Fig. 419) (dorsal view) 1.2x as broad as the mesoscutum, 1.2x as broad as long; temples slightly curved, about 0.26x as long as an eye; POL 2.3 OOL. Antennae (Fig. 420) with combined length of pedicellus and flagellum less than breadth of head; scape 4.8x as long as width; pedicel about 1.9x as long as broad; funicle proximally slightly stouter than the pedicellus, becoming very slightly thicker distad, flagellum strongly clavate, anelli 3 segmented, 3rd anellus almost as long as 0.62x preceding ones; total length of anelli plus F1 as long as pedicel; all the funicular segments strongly transverse, F1 1.3x, F2-F3 1.4x, F4 1.5x, F5 1.7x as wide as length; club 2.1x as long as width, almost 1.12x as long as the three preceding funicular segments together.

Mesosoma (Fig. 419) with pronotum, viewed dorsally, short and strongly transverse; mesoscutum hardly 1.8x as broad as long, notauli traceable about 1/3 way across the mesoscutum; scutellum as long as broad, breadth of its base about 0.23x breadth of the mesoscutum. Forewing with basal cell (Fig. 3c) almost closed and with many seta in basal half; costal cell bare on both surface except for a short row of hairs at its apex; speculum (Fig. 3c) having lower side with densely hairy; costal cell about 12.2x as long as width and 1.73x marginal vein; forewing disc having dense setae on both sides from beginning of marginal vein to tip of wing; marginal vein 1.16x stigmal vein, and 0.88x as long as postmarginal vein; stigmal vein 0.64x as long as post marginal vein Forewing disc having dense setae on both sides almost from beginning of marginal vein to tip of wing. Propodeum short, medially 0.27 as long as scutellum and nearly 4.7x as long as dorsellum, medially smooth, shiny; finely reticulated basally; the median part is hardly produced behind the level of the supracoxal flanges, which are extremely narrow; median carina fairly distinct, plicae absent; nucha represented by a narrow transverse strip; spiracular sulci broad but very shallow, nearly smooth; callus sparsely pilose.

Metasoma (Fig. 419) lanceolate, acuminate, almost as long as head plus thorax, almost 0.8x as broad as mesosoma, 2.45x as long as broad; tips of ovipositor sheaths just visible in dorsal view.

Distribution: Britain, Sweden, Moldavian SSR; local, in marshy places.

Biology: unknown.

***Lampoterma ceutorhynchae* nov. sp.**

(Figs. 1a-h; (Fig. 3b)

Etymology. The name is derived from the name of the host, *Ceutorhynchus assimilis*, from which the types were reared.

Diagnosis: Both mandibles with 3 teeth. Antennae with 3 anelli and 5 funicular segments; scape 0.75x the length of an eye, 5.0x as long as width; pedicel about 1.3x as long as broad; combined length of pedicellus and flagellum about 0.76x breadth of the head; flagellum strongly clavate, all the funicular segments strongly transverse; 3rd anellus almost as long as 2 preceding ones, total length of anelli plus F1 about 1.5x as long as pedicel; F1 1.43x, F2-F5 1.7x as wide as length; club 1.83x as long as width, slightly longer than the three preceding funicular segments together; forewing with costal cell its lower surface with one complete row of hairs and two other partial rows in its distal third; on its upper surface bare, except for

a short row of hairs at its apex; costal cell about 10x as long as width and 2.17x marginal vein; forewing disc having dense setae on both sides from beginning of marginal vein to tip of wing; basal cell bare, basal vein with 4-5 setae; speculum broad, almost reaching whole length of marginal vein, open below, having lower side with densely hairy; marginal vein 1.38x stigmal vein, and 0.75x as long as postmarginal vein; stigmal vein 0.65x as long as post marginal vein.

Description. Female: Body length. 1.87-2.00 mm.

Colour. Body (Figs. 1a,b) with head, thorax and gaster bluish green, some parts occasionally tending towards brassy. Antennal scape and pedicellus testaceous, the former slightly metallic-tinged basally; flagellum testaceous. Coxae concolorous with the thorax; femora in basal 3/4 testaceous; 1/4 apex of femora, trochanters tibiae and tarsi white, pretarsi brown. Tegulae testaceous. Wings hyaline; venation testaceous.

Head (Figs. 1b,e) in dorsal view about as broad as the mesoscutum, 2x as broad as long; temples slightly curved, about 0.45x as long as an eye; POL 2.5 OOL. Head (Figs. 1c,d) about 1.3 times as broad as high in frontal view; eyes separated by about 1.2 times their own length; malar space about 0.44 length of eye, genae converging moderately towards the mouth, their outline only slightly curved; breadth of mouth-opening about 2x the malar space. Mandibles with three teeth. Head with reticulation relatively fine, especially on the face, and not strongly raised. Clypeus with slight strigosity, its anterior margin smooth and polished. Antennae (Fig. 1f) inserted distinctly above the ventral edge of the eyes, but distinctly nearer to the anterior margin of the clypeus than to the median ocellus; scape 0.7x length of an eye, 5x as long as width; pedicel about 1.3x as long as broad; combined length of pedicellus and flagellum about 0.76x breadth of the head; funicle proximally slightly stouter than the pedicellus, becoming very slightly thicker distad, anelli 3 segmented, 3rd anellus almost as long as 2 preceding ones; total length of anelli plus F1 about 1.5x as long as pedicel; F1 1.43x, F2-F5 1.7x as wide as length; club 1.83x as long as width, almost as long as the three preceding funicular segments together.

Mesosoma (Fig. 1b) with pronotum, viewed dorsally, short and strongly transverse, wholly reticulate, with a transverse row of bristles close to its hind margin. Mesoscutum hardly 2.1x as broad as long, moderately shiny, its reticulation rather fine, slightly raised above the general surface; notauli traceable about half way across the mesoscutum. Scutellum 1.2x longer than broad, breadth of its base about 1/4 breadth of the mesoscutum; moderately convex, sculptured like the mesoscutum but more finely. Axillae sculptured like the scutellum. Dorsellum (Fig. 1h) smooth, shiny, not narrowed laterally. Propodeum (Fig. 1h) short, medially 0.25 as long as scutellum and nearly 3.7x as long as dorsellum, medially smooth, shiny; finely reticulated basally; the median part is hardly produced behind the level of the supracoxal flanges, which are extremely narrow; median carina fairly distinct, plicae absent; nucha represented by a narrow transverse strip which is weakly reticulate; spiracular sulci broad but very shallow, nearly smooth; callus sparsely pilose. Post spiracular sclerite not very broad, irregularly reticulate. Reticulation of metapleuron very fine, that of the mesepimeron and mesepisternum coarser; mesepisternum with a large subtriangular almost smooth area below the base of the hind wing. Forewing (Fig. 1g) with costal cell bare on its upper surface except for a short row of hairs at its apex, its lower surface with one complete row of hairs and two other partial rows in its distal third; basal cell bare, basal vein with 5 setae; speculum (Fig. 3b) broad, almost reaching whole length of marginal vein, open below, lower side with

densely hairy; costal cell about 10x as long as width and 2.17x marginal vein; the latter 1.16x stigmal vein, and 0.86x as long as postmarginal vein; stigmal vein 0.64x as long as post marginal vein. Forewing disc having dense setae on both sides from beginning of marginal vein to tip of wing.

Metasoma (Figs. 1a,b) lanceolate, acuminate, almost as long as head plus thorax, compressed and almost 0.8x as broad as mesosoma, 1.75x as long as broad; tips of ovipositor sheaths just visible in dorsal view; tip of hypopygium situated at 0.35 length of metasoma.

Male. unknown.

Material studied: Holotype fem. TURKEY: Erzurum, 1.vii.1979, H. Özbek, reared from the *Ceutorhynchus assimilis* Payk. (Coleoptera: Curculionidae) galls on *Lepidium draba* L. (Doğanlar), in Insect Museum of Biological Control Station, Yüreğir, Adana, Turkey (IMBC). Paratype: 1 fem. Erzurum, 26.vi. 1979, M. Doğanlar; same host and deposition as the holotype.

Comments: *Lampoterma ceutorhynchae* nov. sp. is similar to *Lampoterma viride* (Tomson) and *Lampoterma yoncae* nov. sp. in having antennae with 3 anelli, 5 funicular segments and both mandible with 3 teeth. But it differs from *L. viride* in having basal cell bare, basal vein with 5 setae; marginal vein 1.38x stigmal vein, and 0.75x as long as postmarginal vein; stigmal vein 0.65x as long as post marginal vein; antenna with scape 0.75x the length of an eye, 5.0x as long as width; antenna with pedicel about 1.3x as long as width; combined length of pedicel and flagellum about 0.76x breadth of the head; 3rd anellus almost as long as 2 preceding ones, total length of anelli plus F1 about 1.5x as long as pedicel; F1 1.43x, F2-F5 1.7x as wide as length; club 1.83x as long as width (in *L. viride* basal cell of forewing closed and with many seta in apical half; marginal vein 1.16x stigmal vein, and 0.88x as long as postmarginal vein; antenna with pedicel about 1.9x as long as broad; 3rd anellus almost as long as 0.62x preceding ones; total length of anelli plus F1 as long as pedicel; F1 1.3x, F2-F3 1.4x, F4 1.5x, F5 1.7x as wide as length; club 2.1x as long as width). The new species also differs from *L. yoncae* in having Forewing with speculum having lower side with densely hairy; costal cell about 10x as long as width; forewing disc having dense setae on both sides from beginning of marginal vein to tip of wing; antenna with pedicel about 1.3x as long as broad; 3rd anellus almost as long as 2 preceding ones, total length of anelli plus F1 about 1.5x as long as pedicel; F1 1.43x, F2-F5 1.7x as wide as length; club 1.83x as long as width (in *L. yoncae* Forewing with speculum having lower side bare; costal cell about 8x as long as width; forewing disc having sparse setae on upper side; with lower side almost completely bare basally up to tip of stigmal vein; antenna with pedicel about 1.9x as long as broad; anelli almost in equal size, total length of anelli plus F1 about as long as pedicel; F1 1.5x, F2 1.25x, F3 1.37x, F4 1.83; F5 2x as wide as length; club 2.1x as long as width).

***Lampoterma yoncae* nov. sp.**

(Figs. 2a-h; Fig. 3a)

Etymology. The name is derived from the name of the host plant, *Medicago sativa*, from which the types were swept.

Diagnosis: Both mandibles with 3 teeth. Antennae with 3 anelli and 5 funicular segments; scape 0.75x the length of an eye, 5.0x as long as width; pedicel about 1.9x as long as broad; combined length of pedicellus and flagellum about 0.7x breadth of the head; anelli almost in equal size, flagellum strongly clavate, all the funicular segments strongly transverse; total length of anelli plus F1 about as long as pedicel; F1 1.5x, F2 1.25x, F3 1.37x, F4 1.83; F5 2x as wide as length; club 2.1x as long as width, slightly longer than the three preceding funicular segments

together; forewing with costal cell its lower surface with one complete row of hairs and one other partial short row in its distal third; on its upper surface bare, except for a short row of hairs at its apex; costal cell about 8x as long as width and 2.13x marginal vein; forewing with lower side almost completely bare up to level of tip of stigmal vein, disc having sparse setae on both sides from beginning of marginal vein to tip of wing; basal cell bare, basal vein with 4-5 setae; speculum broad, almost reaching whole length of marginal vein, open below, having lower side bare; marginal vein 1.15x stigmal vein, and 0.75x as long as postmarginal vein; stigmal vein 0.65x as long as post marginal vein.

Description. Female: Body (Figs. 2a,b) length. 1.62-1.9 mm.

Colour. Head, thorax and gaster green to bluish green, some parts occasionally tending towards brassy. Antennal scape and pedicellus yellow, the former slightly metallic-tinged basally; flagellum testaceous. Coxae and trochanters concolorous with the thorax; femora in basal 2/3 testaceous, 1/3 apex white; tibiae and tarsi white, pretarsi yellow. Tegulae testaceous. Wings hyaline; venation testaceous.

Head (Fig. 2d) in dorsal view about 1.14 times as broad as the mesoscutum, 2.22 times as broad as long; temples curved, about 0.4x as long as an eye; POL 2.4 OOL. Head (Fig. 2c) in front view about 1.52 times as broad as high; eyes separated by about 1.4 times their own length; malar space about 0.37 length of eye, genae converging moderately strongly towards the mouth, their outline only slightly curved; breadth of mouth-opening about 2.3 times the malar space. Mandibles with three teeth. Head with reticulation relatively fine, especially on the face, and not strongly raised. Clypeus with slight strigosity, its anterior margin smooth and polished. Antennae (Fig. 2e) inserted distinctly above the ventral edge of the eyes, but distinctly nearer to the anterior margin of the clypeus than to the median ocellus; scape three quarters the length of an eye, 5.25x as long as width; pedicel about 1.9x as long as broad; combined length of pedicellus and flagellum about 0.7x breadth of the head; funicle proximally slightly stouter than the pedicellus, becoming very slightly thicker distad, anelli 3 segmented, total length of anelli plus F1 about as long as pedicel; F1 1.5x, F2 1.25x, F3 1.37x, F4 1.83; F5 2x as wide as length; club 2.1x as long as width, almost as long as the three preceding funicular segments together.

Mesosoma (Fig. 2a) with pronotum, viewed dorsally, very short and strongly transverse, wholly reticulate, with a transverse row of bristles close to its hind margin. Mesoscutum hardly 1.8 times as broad as long, moderately shiny, its reticulation rather fine, slightly raised above the general surface; notauli traceable about half way across the mesoscutum. Scutellum (Figs. 2b,f) hardly longer than broad, breadth of its base about 1/3 breadth of the mesoscutum; moderately convex, sculptured like the mesoscutum but more finely. Axillae sculptured like the scutellum. Dorsellum (Figs. 2f,g) with areolae and transverse costula, shiny, not narrowed laterally. Propodeum (Figs. 2f,g) short, medially 0.27 as long as the scutellum and nearly twice as long as the dorsellum, medially smooth, shiny; with 3 longitudinal carinae; the median part is hardly produced behind the level of the supracoxal flanges, which are extremely narrow; median carina fairly distinct, plicae absent; nucha represented by a narrow transverse strip which is weakly reticulate; spiracular sulci broad but very shallow, nearly smooth; callus sparsely pilose. Post spiracular sclerite not very broad, irregularly reticulate. Reticulation of metapleuron very fine, that of the mesepimeron and mesepisternum coarser; mesepisternum with a large subtriangular almost smooth area below the base of the hind wing. Forewing (Fig. 2h) with costal cell bare on its upper surface except for a short row of hairs at its apex, its lower surface with one complete row of

hairs and one other partial short row in its distal third; basal vein with 4 setae, basal cell bare; speculum (Fig. 3a) broad, almost reaching whole length of marginal vein, open below, lower side bare; 2.11x as long as width; costal cell about 8x as long as width and 2.13x marginal vein; the latter 1.15x stigmal vein, and 0.75x as long as postmarginal vein; stigmal vein 0.65x as long as post marginal vein. Forewing disc having sparse setae on upper side; with lower side almost completely bare.

Metasoma (Figs. 2a,b) lanceolate, acuminate, almost as long as head plus thorax, compressed and almost as broad as mesosoma, 1.6x as long as broad; tips of ovipositor sheaths just visible in dorsal view; tip of hypopygium situated at 0.6 length of metasoma.

Male. Unknown.

Material studied: Holotype fem. TURKEY: Erzurum, 21.vii.1982, swept from field of *Medicago sativa* L. infested by *Hypera postica*, leg. Doğanlar. Paratype fem. Gaziantep, Oğuzeli, 23.vi. 2006, same host as the holotype; in Insect Museum of Biological Control Station, Yüreğir, Adana, Turkey (IMBC).

Comments: The distinctions between this species and other species were summarized above.

Biology. Unknown.

LITERATURE CITED

- Bouček, Z.** 1988. Australasian Chalcidoidea (Hymenoptera). A biosystematic revision of genera of fourteen families, with a reclassification of species. CAB International, Wallingford, Oxon, U.K., Cambrian News Ltd; Aberystwyth, Wales. 832 pp.
- Bouček, Z. & Rasplus, J.-Y.** 1991. Illustrated key to West-Palaeartic genera of Pteromalidae (Hymenoptera: Chalcidoidea). Institut National de la Recherche Agronomique Paris, 140 pp.
- Doğanlar, M.** 1985. Notes on Chalcidoidea of Turkey, II. Pteromalidae. Türkiye Bitki Koruma Dergisi, 9: 27-43.
- Graham, M. W. R. de V.** 1956. A revision of the Walker types of Pteromalidae (Hym., Chalcidoidea). Part 2 (including descriptions of new genera and species). Entomologist's Monthly Magazine, 92: 246-263.
- Graham, M. W. R. de V.** 1969. The Pteromalidae of north-western Europe (Hymenoptera: Chalcidoidea). Bulletin of the British Museum (Natural History) (Entomology) Supplement 16, 909 pp.
- Noyes, J. S.** 2017. Universal Chalcidoidea Database, Natural History Museum London. Available from: www.nhm.ac.uk/entomology/chalcidooids/index.html (accessed September, 2017).
- Öncüler, C.** 1991. A catalogue of the parasites and predators of insect pests of Turkey. 250 pp.
- Thomson, C. G.** 1876. Hymenopteren Scandinaviae. Tom. IV. *Pteromalus* (*Svederus*). 4: 206, Lund.

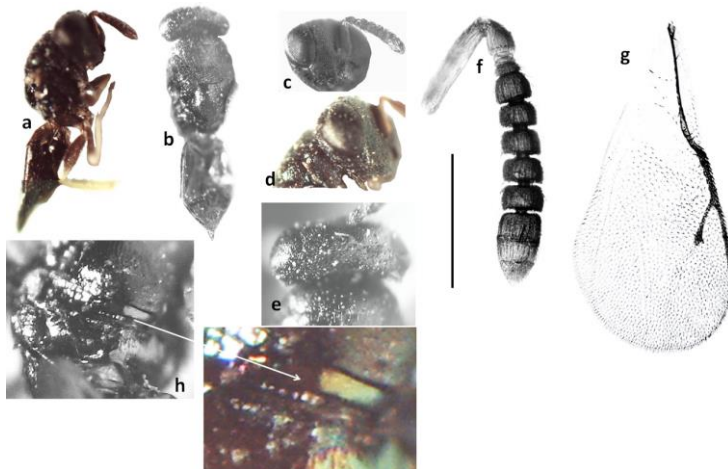


Figure 1. *Lampterma ceutorhynchae* nov. sp. female. a,b. body, a. in lateral view, b. in dorsal view; c-e. head, c. in frontal view; d. fronto-lateral view, e. in dorsal view; f. antenna; g. forewing; h. dorsellum and propodeum, in dorsolateral view. (Scale bar for a,b=1.1 mm; for c=0.37 mm; for d,e=0.7 mm; for f=0.2 mm; for g,h=0.55 mm).

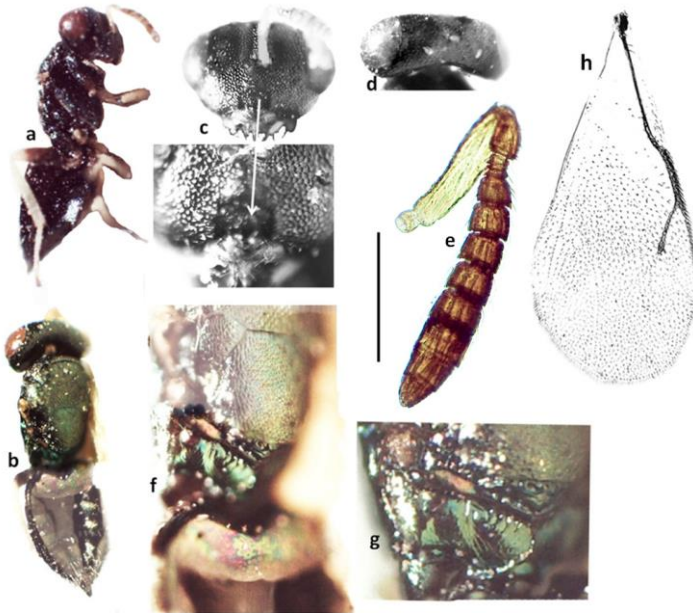


Figure 2. *Lampoterma yoncae* nov. sp. female. a,b. body, a. in lateral view, b. in dorsal view; c,d. head, c. in frontal view; d. in dorsal view; e. antenna; f. scutellum, propodeum and base of metasoma, in dorsal view; g. propodeum, in dorsolateral view; h. forewing. (Scale bar for a,b=0.91 mm; for c,d= 0.6 mm; for e,f= 0.18 mm; for g=0.11 mm; for h=0.54 mm) .

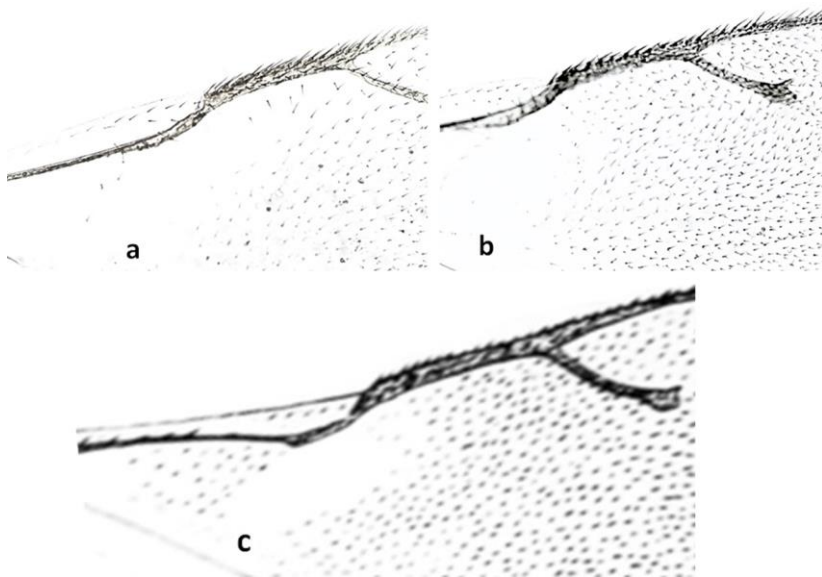


Figure 3. *Lampoterma* spp. female. speculum. a. *L. yoncae* nov. sp.; b. *L. ceutorhynchae* nov. sp. c. *L. viride* (Tomson) (Scale bar for marginal vein=0.42 mm).