

## SCIENTIFIC NOTE

**FIRST RECORD ON INCIDENCE OF BEAN SEED FLY,  
*DELIA PLATURA* MEIGEN (ANTHOMYIIDAE: DIPTERA)  
IN AUTUMN SOWN BEANS IN KASHMIR VALLEY (INDIA)****Satnam Singh\*, Z. A. Baba\*\*,  
Mohd Abas Shah\*\* and Rajesh Kumar\*\*\***

\* Punjab Agricultural University, Regional Station Faridkot, Punjab, INDIA.

\*\* Faculty of Agriculture and Regional Research Station, Wadura, Sopore, SKUAST-Kashmir, INDIA.

\*\*\* Entomology Section, Central Muga Eri Research and Training Institute, Central Silk Board, Ministry of Textiles: Gov. of India, Lahdoigarh, Jorhat Assam, INDIA. E-mail: rajesh.ento@gmail.com

**[Singh, S., Baba, Z. A., Abas Shah, M., Kumar, R. 2014. First record on incidence of Bean Seed Fly, *Delia platura* Meigen (Anthomyiidae: Diptera) in Autumn Sown Beans in Kashmir valley (India). Munis Entomology & Zoology, 9 (1): 586-587]**

*Delia platura* (Diptera: Anthomyiidae) (Figs. A to F) was observed damaging germinating autumn sown beans in Wadura area of Sopore district in Kashmir Valley in March 2008. This is the first record of this pest attacking beans in India. The pest was very serious on the germinating seeds with about one to seven maggots recorded on the single germinating seedling. The attacked seedlings became weak and the turned rusty brown and ultimately dried off. The maggots were creamish in colour and 10 to 15 mm in length. The pupation was in the soil from which blackish fly emerged.

*D. platura* characterized with the following characters: In males, in the hind femur, only around 3-5 posteroventral setae are present. In females, common arrangement of mid-tibial setae, though may be any combination of 1-2 anterodorsal, (1-2) posterodorsal and 2(-3) posteroventral setae. The specimens were photographed through Stereoscopic Zoom Microscope (RSMr 10) with the help of software View7 at CMERTI, Lahdoigarh (Figs. A to F). Field photograph were taken at crop field, Agriculture and Regional Research Station, Sopore, Jammu & Kashmir (Fig. G).

Bean seed fly, seed corn maggot polyphagous, attacks beans, maize, crucifers, cucurbits, cotton. Information is given on the geographical distribution in Europe, Albania, Austria, Azores, Balearic Islands, Belgium, Bulgaria, Channel Islands, Corsica, Crete, Cyprus, Czechoslovakia, Denmark, Faroe Islands, Finland, France, Germany, East Germany, West Greece, Hungary, Iceland, Italy, Netherlands, Norway, Poland, Portugal, Romania, Sicily, Spain, Switzerland, Turkey, United Kingdom, Yugoslavia, USSR, Azerbaijan, Byelorussia, Republic of Georgia, Kazakhstan, Russian SFSR, Ukraine, Uzbekistan, Africa, Algeria, Canary Islands, Egypt, Ethiopia, Kenya, Libya, Madagascar, Madeira, Morocco, Rwanda St. Helena, South Africa, Sudan, Tanzania, Tunisia, Uganda, Zimbabwe, ASIA, China, India, Iran, Iraq, Israel, Japan, Korea, Lebanon, Nepal, Pakistan, Saudi Arabia, Sri Lanka, Syria, Taiwan, Yemen, Australasia and Pacific Islands, Australia, Hawaii, New Zealand, North America, Canada, Greenland, Mexico, USA, Central America and Caribbean, Bermuda, South America, Argentina, Bolivia, Brazil, Chile, Colombia, Ecuador, Peru, Uruguay, Venezuela (Anon. 1985; Chaudhary, 1989) and now first time in the Kashmir valley on beans. It may be concluded that

such migrations and shift in the host plant can be used as indicators of climate change.

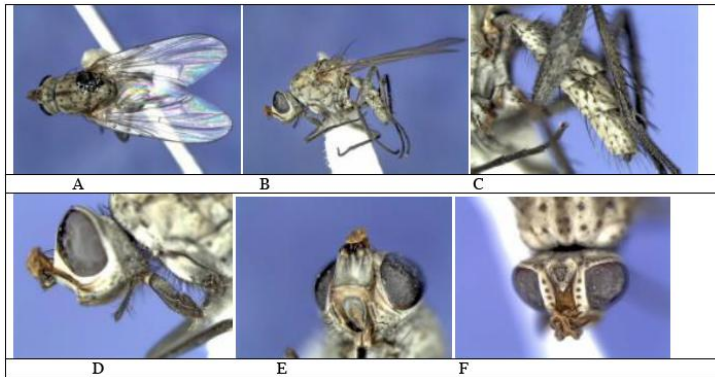
### ACKNOWLEDGEMENT

The identification and photographs done by Dr. Rajesh Kumar, Scientist, In-charge Entomology Section, Central Muga Eri Research and Training Institute, Central Silk Board, Ministry of Textiles: Govt. of India, Lahdoigarh, Jorhat 785700 is gratefully acknowledged.

### LITERATURE CITED

**Anonymous**, 1985. *Delia platura*, Distribution map. Distribution Maps of Plant Pests. (December): Map 141.

**Chaudhary, R. N., Kanaujia, K. R. & Sharma, V. K.** 1989. A note on the incidence of seed corn maggot, *Delia platura* Meigen (Anthomyiidae: Diptera) in spring sown maize. Bulletin of Entomology, 28: 159-161.



Figures A-F. A. Dorsal View, B. Lateral View, C. Enlarged abdomen, D. Lateral view of mouth parts, E. Ventral View of mouth part, and F. Dorsal view of mouth parts.



Figure G. Damaged seedlings due to maggots of *Delia platura*.