

**AN ATTEMPT ON SUBGENERIC COMPOSITION OF THE  
PALAEARCTIC GENUS *STENURELLA* VILLIERS, 1974  
(CERAMBYCIDAE: LEPTURINAE: LEPTURINI)**

**Hüseyin Özdikmen\***

\* Gazi Üniversitesi, Fen-Edebiyat Fakültesi, Biyoloji Bölümü, 06500 Ankara / TÜRKİYE. E-mail: ozdikmen@gazi.edu.tr

[**Özdikmen, H.** 2013. An attempt on subgeneric composition of the genus *Stenurella* Villiers, 1974 (Cerambycidae: Lepturinae: Lepturini). *Munis Entomology & Zoology*, 8 (2): 509-531]

**ABSTRACT:** The paper was presented an essay on subgeneric composition of the palaeartic genus *Stenurella* Villiers, 1974. As a result of the present work, four new subgenera were described except the nominotypical subgenus for the genus *Stenurella* Villiers, 1974 that has not been included any subgenus until now. Also a key was proposed for all valid taxa of the genus in the text.

**KEY WORDS:** *Stenurella*, Cerambycidae, Lepturinae, Lepturini.

The genus *Stenurella* was described by Villiers (1974) with the type species *Leptura melanura* Linnaeus, 1758 by original designation. A total of 9 species which are placed in the genus *Stenurella* Villiers, 1974 now, had been described by various authors until that time. These species are *Strangalia approximans* Rosenhauer, 1856: 305, *Leptura bifasciata* O. F. Müller, 1776: 93, *Strangalia hybridula* Reitter, 1902: 188, *Leptura jaegeri* Hummel, 1825: 68, *Leptura melanura* Linnaeus, 1758: 397, *Leptura nigra* Linnaeus, 1758: 398, *Strangalia novercalis* Reitter, 1901: 78, *Leptura septempunctata* Fabricius, 1792: 346 and *Leptura vaucheri* Bedel, 1900: 336.

After that time, some new species and subspecies have been described by various authors up to now. These species and subspecies are *Stenurella samai* Rapuzzi, 1995: 617, *Stenurella sennii* Sama, 2002: 40, *Stenurella intermedia* Holzschuh, 2006: 219, *Stenurella pamphyliae* Rapuzzi & Sama, 2009: 182, *Stenurella bifasciata safronovi* Danilevsky, 2011: 2, *Stenurella zehrae* Özdikmen et al., 2012: 18, *Stenurella sabiniae* Rapuzzi & Sama, 2012: 664 and *Stenurella solaris* Rapuzzi & Sama, 2012: 665 chronologically.

Moreover, *Strangalia nigrosuturalis* Reitter, 1895: 88 was accepted by Adlbauer (1988) as a subspecies of *Stenurella bifasciata*. *Stenurella intermedia* was downgraded by Danilevsky (2011) as a subspecies of *Stenurella bifasciata*. In the same work, he accepted *Strangalia bifasciata* v. *ferruginipes* that was described by Pic (1895: 76) and *Strangalia lanceolata* Mulsant & Rey, 1863: 177 that was regarded as a synonym of *Stenurella bifasciata*, as subspecies of *Stenurella bifasciata*. Also *Strangalia bifasciata* v. *ferruginipes* was accepted by Rapuzzi & Sama (2012) as a separate species.

Newly, Löbl & Smetana (2010) gave a total of 15 valid taxa for the genus *Stenurella* in their catalogue as follows:

*Stenurella approximans* (Rosenhauer, 1856)  
*Stenurella bifasciata bifasciata* (O. F. Müller, 1776)  
*Stenurella bifasciata limbiventris* (Reitter, 1898)  
*Stenurella bifasciata nigrosuturalis* (Reitter, 1895)  
*Stenurella hybridula* (Reitter, 1902)

*Stenurella intermedia* Holzschuh, 2006  
*Stenurella jaegeri* (Hummel, 1825)  
*Stenurella melanura* (Linnaeus, 1758)  
*Stenurella nigra* (Linnaeus, 1758)  
*Stenurella novercalis* (Reitter, 1901)  
*Stenurella samai* Rapuzzi, 1995  
*Stenurella sennii* Sama, 2002  
*Stenurella septempunctata septempunctata* (Fabricius, 1792)  
*Stenurella septempunctata suturata* (Reiche & Saulcy, 1858)  
and *Stenurella vaucheri* (Bedel, 1900)

In this manner, the data for the genus were accumulated over the time. Therefore, the data need to be arranged.

**Subfamily** LEPTURINAE Latreille, 1802: 218

**Tribe** LEPTURINI Latreille, 1802: 218

**Genus** *STENURELLA* Villiers, 1974

Type sp.: *Leptura melanura* Linnaeus, 1758: 397

The main diagnostic character for the genus is “pronotum evenly rounded behind front margin”.

Also the characters of the genus can be summarized as follows:

Long 5-15 mm. Narrow body, base of elytra rather more large than that of pronotum. Head with more or less lengthened. Eyes big and protruding, emarginated. Antennae strongly at the base, slightly thickened, attaining almost the apex of elytra or slightly longer than elytral apex in the males, about the apical third or the apical fourth in the females, the longest third article, the fifth a little longer than the fourth.

Pronotum trapezoidal, at the front edge narrow, followed by a transverse depression, basal depression weakly and posterior angle very sharpened and strongly extended laterally. Elytra narrow, obliquely truncate or more or less rounded in the apex, if obliquely truncate, then the outer angle of apex pointed or thornlike. Legs long and slender, hind tarsi very narrow, first segment much longer than following two segments together.

The genus *Stenurella* has Palaearctic chorotype. *Stenurella melanura* (Linnaeus, 1758) and *Stenurella bifasciata* (O. F. Müller, 1776) are the widely distributed species. *Stenurella nigra* (Linnaeus, 1758) and *Stenurella septempunctata* (Fabricius, 1792) follow them. The other species have more or less locally distribution. Among them, *Stenurella approximans* (Rosenhauer, 1856) and *Stenurella vaucheri* (Bedel, 1900) are endemic to Western Mediterranean area; *Stenurella hybridula* (Reitter, 1902) is endemic to Iberian Peninsula; and *Stenurella pamphylliae* Rapuzzi & Sama, 2009 and *Stenurella zehrae* Özdikmen et al., 2012 are endemic to Turkey.

Relatively, *Stenurella approximans* (Rosenhauer, 1856) is the biggest, *Stenurella nigra* (Linnaeus, 1758) is the smallest species for the genus.

The genus can be divided into 7 groups as follows:

Group I (melanura species-group)

Including *Stenurella melanura*, *Stenurella pamphylliae*, *Stenurella samai samai*, *Stenurella samai sennii*, *Stenurella zehrae*.

## Group II (bifasciata species-group)

Including *Stenurella bifasciata bifasciata*, *Stenurella bifasciata intermedia*, *Stenurella bifasciata lanceolata*, *Stenurella bifasciata limbiventris*, *Stenurella bifasciata nigrosuturalis*, *Stenurella bifasciata safronovi*, *Stenurella ferruginipes* (= *Stenurella solaris*), *Stenurella sabinae*.

## Group III (septempunctata species-group)

Including *Stenurella septempunctata septempunctata*, *Stenurella septempunctata latenigra*, *Stenurella vaucheri*.

## Group IV (jaegeri species-group)

Including *Stenurella jaegeri*, *Stenurella novercalis*.

## Group V (nigra species-group)

Including *Stenurella nigra*.

## Group VI (approximans species-group)

Including only *Stenurella approximans*.

## Group VII (hybridula species-group)

Including only *Stenurella hybridula*.

#### A KEY OF THE GENUS *STENURELLA* VILLIERS, 1974

1. Posterior part of head (neck) with shallow transverse depression.....2
- Posterior part of head (neck) with deeper transverse depression.....4
2. Pronotum with erect hairs; elytral apex more or less rounded.....
- .....**Subgen. nov. *IBEROSTENURELLA***
- .....***Stenurella hybridula* (Reitter, 1902)**
- Pronotum without erect hairs; elytral apex more or less obliquely truncate.....3
3. Larger body; Upperside bicolored, head and pronotum black, elytra dark brownish-red.....
- .....**Subgen. nov. *CRASSOSTENURELLA***
- .....***Stenurella approximans* (Rosenhauer, 1856)**
- Smaller body; Upperside unicolored, completely black.....
- .....**Subgen. nov. *NIGROSTENURELLA***
- .....***Stenurella nigra* (Linnaeus, 1758)**
4. Elytral apex more or less rounded; In females, elytra completely black except brown-yellow or reddish colored basal quarter of elytra.....
- .....**Subgen. nov. *STENURELLOIDES*.....5**
- Elytral apex more or less obliquely truncate; In females, elytra never so like.....6
5. Elytra brown-yellow with grayish pubescence; antennae extend to the elytral apex.....
- .....***Stenurella jaegeri* (Hummel, 1825)**
- Elytra reddish with black pubescence; antennae slightly longer than elytral apex.....
- .....***Stenurella novercalis* Reitter, 1901**
6. Abdomen completely black; pronotal punctuation strongly or deeper; legs always completely black.....
- .....***melanura*-species group...**
- .....**Subgen. *STENURELLA* Villiers, 1974.....7**

- . Abdomen completely or partly reddish or yellowish; pronotal punctuation finely; legs completely black or at least partly reddish or brown-yellow.....  
 .....**bifasciata-species group** and **septempunctata-species group**....  
 .....**Subgen. nov. PRISCOSTENURELLA**.....**12**
- 7.** Elytra with black pubescence; In females, black sutural spot extends elytral apex to base.....***Stenurella melanura* (Linnaeus, 1758)**  
 -. Elytra with yellow or golden-yellow pubescence; In females, black sutural spot extends elytral apex to about first quarter of elytra, not base.....**8**
- 8.** Pronotal punctuation deeply.....**9**  
 -. Pronotal punctuation relatively strongly and deeper.....  
 .....***Stenurella zehrae* Özdikmen, Mercan & Cihan, 2012**
- 10.** Elytra reddish in both sexes.....  
 .....***Stenurella pamphylliae* Rapuzzi & Sama, 2009**  
 -. Elytra yellowish in males, reddish in females.....**11**
- 11.** Pronotal punctuation deeply and dense.....  
 .....***Stenurella samai sennii* Sama, 2002 stat. nov.**  
 -. Pronotal punctuation not so deeply and moderately dense.....  
 .....***Stenurella samai samai* Rapuzzi, 1995**
- 12.** Elytra yellowish with black or darkened areas.....  
 .....***septempunctata-species group***.....**13**  
 -. Elytra reddish with black or darkened areas.....  
 .....***bifasciata-species group***.....**15**
- 13.** Pronotum completely yellowish.....  
 .....***Stenurella septempunctata septempunctata* (Fabricius, 1792)**  
 -. Pronotum completely black.....**14**
- 14.** Vertex brownish-yellow.....  
 .....***Stenurella septempunctata latenigra* (Pic, 1915)**  
 -. Vertex black.....***Stenurella vaucheri* (Bedel, 1900)**
- 15.** Legs completely black.....**16**  
 -. Legs at least partly reddish.....**21**
- 16.** Abdomen completely black.....  
 .....***Stenurella bifasciata limbiventris* (Reitter, 1898)**  
 -. Abdomen partly or completely reddish.....**17**
- 17.** Elytra widely darkened along the suture.....**18**  
 -. Elytra not widely darkened along the suture.....**20**
- 18.** Pronotal punctuation rough.....**19**  
 -. Pronotal punctuation rough not so like; Western European subspecies.....  
 .....***Stenurella bifasciata lanceolata* (Mulsant & Rey, 1863)**
- 19.** Elytral black area much more developed.....  
 .....***Stenurella bifasciata nigrosuturalis* (Reitter, 1895)**

- . Elytral black area less developed.....  
 .....***Stenurella bifasciata safronovi* Danilevsky, 2011**
- 20.** Pronotal punctuation finely and dense.....  
 .....***Stenurella bifasciata bifasciata* (Müller, 1776)**
- . Pronotal punctuation relatively bigger.....  
 .....***Stenurella bifasciata intermedia* Holzschuh, 2006**
- 21.** Elytral apex more or less rounded.....  
 .....***Stenurella ferruginipes* (Pic, 1895)**  
 .....***Stenurella solaris* Rapuzzi & Sama, 2012 syn. nov.**
- . Elytral apex more or less obliquely truncate.....  
 .....***Stenurella sabiniae* Rapuzzi & Sama, 2012**

### Subgenus *STENURELLA* Villiers, 1974

Type sp.: *Leptura melanura* Linnaeus, 1758: 397

#### Group I (*melanura* species-group)

Including *Stenurella melanura*, *Stenurella pamphylicae*, *Stenurella samai samai*, *Stenurella samai sennii*, *Stenurella zehrae*.

#### Description:

6-12 mm;

Head black except yellowish maxillae; Antennae black in both sexes; In males, antennae extend to the elytral apex or slightly longer than elytral apex; In females, antennae as long as about three fourth or about four fifth of elytra; In both sexes, 3rd the longest antennal segment, 5th and 4th follow it; 4<sup>th</sup> segment as long as about two third- four fifth (0.64-0.82) of 3<sup>rd</sup> segment; 4<sup>th</sup> segment as long as about four fifth-nine tenth (0.76-0.93) or about the same length (0.98) of 5<sup>th</sup> segment; 5<sup>th</sup> segment as long as about three fourth-nine tenth (0.73-0.96) of 3rd segment; Posterior part of head (neck) with deeper transverse depression;

Pronotum completely black and as long as about one fourth-two fifth (0.24-0.39) of elytra;

Elytral coloration with sexual dimorphism; In males, elytra brown-yellow, reddish or yellowish with darkened apex and suture; In females, red or reddish with apex and along the suture widely black (apex to base of elytra or never reaches to scutellum (extends apex to first quarter or about one fifth of elytra)); Elytral apex oblique truncate; Elytral width slightly more than half of elytral length (0.50-0.54) or as long as about two fifth (0.38-0.39) of elytra;

Pygidium black;

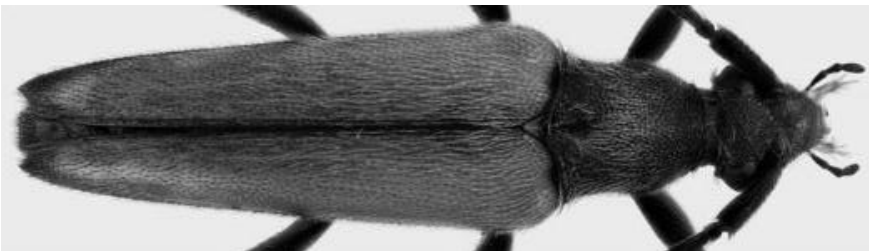
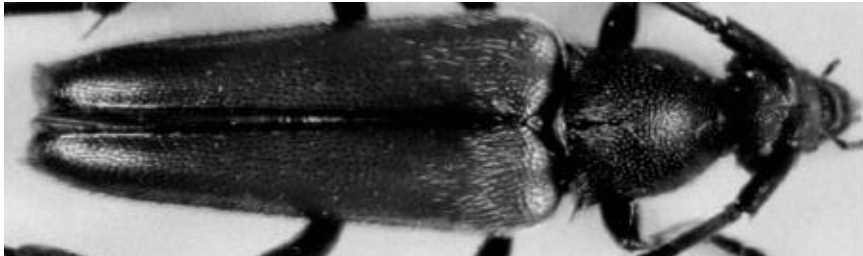
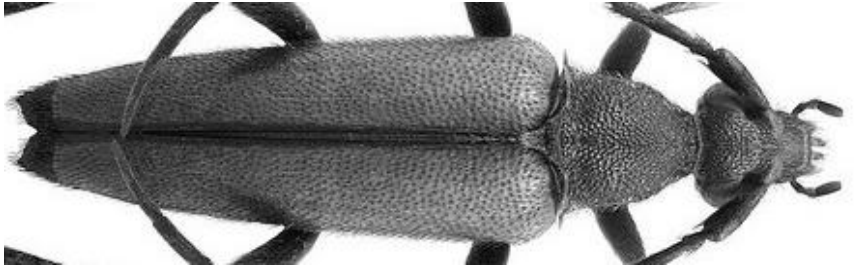
Abdomen completely black in both sexes;

Legs completely black or completely black, but especially tibiae clothed very dense yellow pubescence; First segment of metatarsus slightly longer than the remaining segments together (1.06-1.13 times); First segment of metatarsus as long as 1.50-1.92 times of the 2-3rd segments together; Hind tibia shorter than metatarsus and as long as about two third (0.62) or more (up to 0.88) of metatarsus; Hind tibia longer than first segment of metatarsus. First segment of metatarsus as long as about three fifth-four fifth (0.56-0.81) of hind tibia;

Punctuation of head, pronotum and elytra almost same each other: strongly or deeply; very dense, dense or densely; contiguous or not contiguous;

Upperside with variable pubescence; Head and anterior half of pronotum sometimes with short black pubescence; Pronotum with yellowish or golden yellow pubescence especially in the basal half; Elytra with black or golden-yellow pubescence; Underside with dense yellowish or golden yellow pubescence; Pronotum without erect hairs.

Chorotype: Sibero-European [It distributed in almost all Europe, Siberia, Russian Far East, Japan, China, Mongolia, Kazakhstan, all Caucasus, Turkey].





This group includes five species-group taxa as *Stenurella melanura* (Linnaeus, 1758), *Stenurella pamphylicae* Rapuzzi & Sama, 2009, *Stenurella samai samai* Rapuzzi, 1995, *Stenurella samai sennii* Sama, 2002 and *Stenurella zehrae* Özdikmen et al., 2012 now. The above mentioned characters for the group, therefore, are obtained from them.

**Species** *Stenurella melanura* Linnaeus, 1758: 397 (*Leptura*)  
*diversiventris* Dufour, 1843: 103 (*Strangalia*)  
*georgiana* Pic, 1891g: 63 (*Strangalia*)  
*latesaturata* Pic, 1891g: 63 (*Strangalia*)  
*melanurella* Reitter, 1901b: 78 (*Strangalia*)  
*rubellata* Reitter, 1901b: 77 (*Strangalia*)  
*semicrassa* Pic, 1901n: 58 (*Leptura*)  
*similis* Herbst, 1784: 101 (*Leptura*)  
*suturanigra* DeGeer, 1775: 138 (*Leptura*)

Type loc.: Europa (Europe)

Chorotype: Sibero-European [It distributed in almost all Europe, Siberia, Russian Far East, Japan, China, Mongolia, Kazakhstan, all Caucasus, Turkey].

**Species** *Stenurella pamphylicae* Rapuzzi & Sama, 2009: 182

Type loc.: Antalya (Turkey)

It is endemic to Turkey now.

Chorotype: Anatolian [It distributed only in SW Turkey].

**Species** *Stenurella samai* Rapuzzi, 1995: 617

**Subspecies** *Stenurella samai samai* Rapuzzi, 1995: 617

Type loc.: Ildiz dag; Demirköy (European Turkey: Kırklareli prov.)

It is Eastern subspecies.

Chorotype: SE European [It distributed only in Balkans: Bulgaria, Greece, NW Turkey].

**Subspecies** *Stenurella samai sennii* Sama, 2002: 40 **stat. nov.**

Type loc.: France

It is Western subspecies. The taxon was described by Sama (2002) from France. He distinguished only from *Stenurella melanura* in his original description. The taxon, however, is very close to *Stenurella samai* Rapuzzi, 1995. It differs from *Stenurella samai* by denser and deeper pronotal punctuation as the main character. So, it is a subspecies of *Stenurella samai* Rapuzzi, 1995.

Chorotype: S-European [It distributed in France, Switzerland, Italy, Greece].

**Species** *Stenurella zehrae* Özdikmen et al., 2012: 18

Type loc.: Düzce (Turkey)

It is endemic to Turkey now.

Chorotype: Anatolian [It distributed only in NW Turkey].

**Subgen. nov. PRISCOSTENURELLA**

Type sp.: *Leptura bifasciata* O. F. Müller, 1776: 93

The subgenus includes 2 species-groups as follows:

**Group II (*bifasciata* species-group)**

Including *Stenurella bifasciata bifasciata*, *Stenurella bifasciata intermedia*, *Stenurella bifasciata lanceolata*, *Stenurella bifasciata limbiventris*, *Stenurella bifasciata nigrosuturalis*, *Stenurella bifasciata safronovi*, *Stenurella ferruginipes* (= *Stenurella solaris*), *Stenurella sabiniae*.

**Group III (*septempunctata* species-group)**

Including *Stenurella septempunctata septempunctata*, *Stenurella septempunctata latenigra*, *Stenurella vaucheri*.

So, the following description obtained from the taxa that mentioned above.

**Description:**

6-12.5 mm;

Head completely black or black except yellowish maxillae, or orange or brown-yellow mouth parts and vertex; Antennae completely black, reddish or orange, or orange or brown-yellow except darkened basal segments; In males, antennae extend to the elytral apex, or slightly longer or slightly shorter than elytral apex; In females, antennae as long as about three fourth or four fifth of elytra; In both sexes, 3<sup>rd</sup> the longest antennal segment, 5<sup>th</sup> and 4<sup>th</sup> follow it, or 3<sup>rd</sup> antennal segment as long as the same length (0.95-1.05) of 5<sup>th</sup> and 4<sup>th</sup> follow it; 4<sup>th</sup> segment as long as about two third-nine tenth (0.64-0.89) of 3<sup>rd</sup> segment; 4<sup>th</sup> segment as long as about three fourth-nine tenth (0.76-0.94) of 5<sup>th</sup> segment; 5<sup>th</sup> segment as long as about three fourth (0.72-0.75)-nine tenth (0.82-0.90) of 3<sup>rd</sup> segment; Posterior part of head (neck) with deeper transverse depression;

Pronotum completely black or almost completely orange; Pronotum as long as about three tenth—one third (0.28-0.37) of elytra;



Elytral coloration with or without sexual dimorphism; If with that, then, in males, elytra dark reddish with darkened apex and the suture, or elytra yellowish with darkened apex, black suture and the base widely or narrowly; In females, reddish or dark red with black apex and behind the middle black widely transversal spot that sometimes very widened along the suture to elytral base; If without that, then, elytra orange (brown-yellow) or yellow with variable black spots in both sexes, but with or without sutural black band; Elytral apex more or less oblique truncate or more or less rounded; Elytral width slightly more than half of elytral length (0.50-0.60);

Pygidium completely black, orange, brown-yellow or reddish, or reddish with black apex;

Abdomen completely or mostly red with last segment blackened in both sexes, or completely orange or brown-yellow except black last segment, or reddish except darkened laterally in males;

Legs completely black, or red or reddish with at least hind tibiae entirely or only apically black, tarsi black, or legs not completely black, in both sexes, mostly orange or brown-yellow with black apex of hind femora and also top of hind tibiae and sometimes middle and hind tarsi darkened, or if legs black except all femora reddish in males, then legs completely reddish in females; First segment of metatarsus slightly shorter or slightly longer than the remaining segments together (0.94-0.97 or 1.04-1.08 times); First segment of metatarsus as long as 1.44-1.64 times of the 2-3rd segments together; Hind tibia shorter than metatarsus and as long as about three fifth (0.58-0.59) or more (up to 0.86) of metatarsus; Hind tibia slightly longer or longer than first segment of metatarsus; First segment of metatarsus as long as about two third- nine tenth (0.66-0.92) of hind tibia;

Punctuation of head, pronotum and elytra almost same each other: finely or deeply; moderately dense or dense; slightly contiguous or not contiguous;

Upperside and underside with yellowish or golden yellow pubescence; Pronotum without erect hairs.

Chorotype: Palaearctic [It is distributed in almost all Europe, European Russia, Caucasus (Armenia, Azerbaijan, Georgia), Turkey, Iran, Iraq, Siberia, Kazakhstan, China, North Africa (Morocco)].

Etymology: From the Latin word “priscus” (meaning in English “ancient, early, former”).

The subgenus includes 2 species-groups. Therefore, descriptions of these groups are also given separately as follows:

### **Group II (*bifasciata* species-group)**

Including *Stenurella bifasciata bifasciata*, *Stenurella bifasciata intermedia*, *Stenurella bifasciata lanceolata*, *Stenurella bifasciata limbiventris*, *Stenurella bifasciata nigrosuturalis*, *Stenurella bifasciata safronovi*, *Stenurella ferruginipes* (= *Stenurella solaris*), *Stenurella sabinae*.

### **Description:**

6-10 mm;

Head black except yellowish maxillae; Antennae black in both sexes; In males, antennae slightly longer or slightly shorter than elytral apex; In females, antennae as long as about four fifth of elytra; In both sexes, 3<sup>rd</sup> the longest antennal

segment, 5<sup>th</sup> and 4<sup>th</sup> follow it, or 3<sup>rd</sup> antennal segment as long as the same length (0.95-1.05) of 5<sup>th</sup> and 4<sup>th</sup> follow it; 4<sup>th</sup> segment as long as about two third-nine tenth (0.64-0.89) of 3<sup>rd</sup> segment; 4<sup>th</sup> segment as long as about three fourth-nine tenth (0.76-0.93) of 5<sup>th</sup> segment; 5<sup>th</sup> segment as long as the same length (0.95-1.05) or as long as about nine tenth (0.85-0.90) of 3<sup>rd</sup> segment; Posterior part of head (neck) with deeper transverse depression;

Pronotum completely black; Pronotum as long as about one third (0.32-0.37) of elytra;

Elytral coloration with sexual dimorphism; In males, elytra dark reddish with darkened apex and the suture, or elytra yellowish with darkened apex, black suture and the base widely or narrowly; In females, reddish or dark red with black apex and behind the middle black widely transversal spot that sometimes very widened along the suture to elytral base; Elytral apex more or less oblique truncate or more or less rounded; Elytral width slightly more than half of elytral length (0.54-0.60);

Pygidium completely black or reddish with black apex;

Abdomen completely or mostly red with last segment blackened in both sexes;

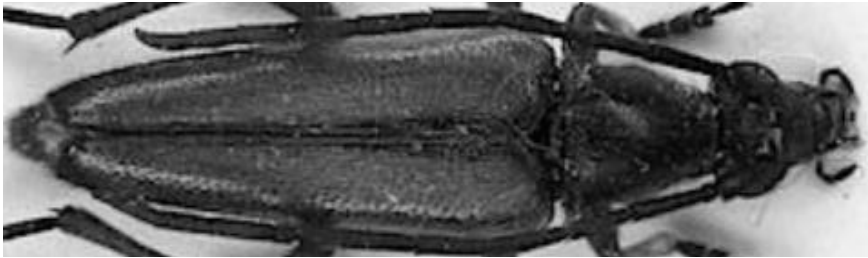
Legs completely black, or red or reddish with at least hind tibiae entirely or only apically black, tarsi black; First segment of metatarsus slightly shorter or slightly longer than the remaining segments together (0.94-0.96 or 1.04-1.07 times); First segment of metatarsus as long as 1.44-1.64 times of the 2-3<sup>rd</sup> segments together; Hind tibia shorter than metatarsus and as long as about two third (0.63) or more (up to 0.86) of metatarsus; Hind tibia longer than first segment of metatarsus. First segment of metatarsus as long as about two third-three fourth (0.66-0.73) of hind tibia;

Punctuation of head, pronotum and elytra almost same each other: finely or deeply; moderately dense or dense; slightly contiguous or not contiguous;

Upperside and underside with yellowish or golden yellow pubescence; Pronotum without erect hairs.

Chorotype: Sibero-European [It is distributed in almost all Europe, European Russia, Caucasus (Armenia, Azerbaijan, Georgia), Turkey, Iran, Iraq, Siberia, Kazakhstan, China].





This group includes eight species-group taxa as *Stenurella bifasciata bifasciata* (O. F. Müller, 1776), *Stenurella bifasciata intermedia* Holzschuh, 2006, *Stenurella bifasciata lanceolata* (Mulsant & Rey, 1863), *Stenurella bifasciata limbiventris* (Reitter, 1898), *Stenurella bifasciata nigrosuturalis* (Reitter, 1895), *Stenurella bifasciata safronovi* Danilevsky, 2011, *Stenurella ferruginipes* (Pic, 1895) [= *Stenurella solaris* Rapuzzi & Sama, 2012] and *Stenurella sabinae* Rapuzzi & Sama, 2012 now. The above mentioned characters for the group, therefore, are obtained from them.

**Species** *Stenurella bifasciata* O. F. Müller, 1776: 93 (*Leptura*)

**Subspecies** *Stenurella bifasciata bifasciata* O. F. Müller, 1776: 93 (*Leptura*)

*albarracina* Wagner, 1927a: 45 (*Leptura*)

*cruciata* Olivier, 1795: 7 (*Leptura*)

*immaculata* Pic, 1889b: 55 (*Strangalia*)

*nigriventris* Pic, 1891b: 15 (*Strangalia*)

*sedakovii* Mannerheim, 1852b: 307 (*Stenura*)

*ustulata* Laicharting, 1784: 157 [HN] (*Leptura*)

Type loc.: Dania (Denmark)

Chorotype: Sibero-European [It is distributed in almost all Europe, European Russia, Caucasus (Armenia, Azerbaijan, Georgia), Turkey, Iran, Iraq, Siberia, Kazakhstan, China].

**Subspecies** *Stenurella bifasciata intermedia* Holzschuh, 2006: 219

Type loc.: Magnisia (Greece)

It was described by Holzschuh (2006) as a separate species. Danilevsky (2011) accepted it as a subspecies of the species.

Chorotype: SE-European [It is distributed only in south-eastern Europe (Balkans: Albania, Macedonia, Bulgaria, Greece)].

**Subspecies** *Stenurella bifasciata lanceolata* Mulsant & Rey, 1863: 177 (*Strangalia*)

Type loc.: L'Espagne (Spain)

It was described by Mulsant & Rey (1863) as a variety of *Strangalia bifasciata*. Danilevsky (2011) upgraded it as a subspecies of the species.

Chorotype: W-European [It is distributed only in western Europe (Spain, France)].

**Subspecies** *Stenurella bifasciata limbiventris* Reitter, 1898: 21 (*Strangalia*)

Type loc.: Caucasus

It was described by Reitter (1898) as a separate species *Strangalia limbiventris*.

Chorotype: SW-Asiatic (Anatolo-Caucasian) [It is distributed only in Caucasus (Georgia) and NE Turkey].

**Subspecies** *Stenurella bifasciata nigrosuturalis* Reitter, 1895: 88 (*Strangalia*)

Type loc.: Akbes (Turkey: Hatay: Akbez)

It was described by Reitter (1895) as a separate species *Strangalia nigrosuturalis*.

Chorotype: E-Mediterranean (Palestino-Taurian) [It is distributed only in Lebanon, Syria, S Turkey].

**Subspecies** *Stenurella bifasciata safronovi* Danilevsky, 2011: 2

Type loc.: Antalya and Isparta provinces (Turkey)

It is endemic to Turkey now.

Chorotype: Anatolian [It is distributed only in SW Anatolia].

**Species** *Stenurella ferruginipes* (Pic, 1895: 76)  
*solaris* Rapuzzi & Sama, 2012: 665 **syn. nov.**

Type loc.: Bitlis (E Turkey)

It is endemic to Turkey now. *Stenurella solaris* that was newly described by Rapuzzi & Sama (2012) also from Bitlis province in East Turkey, is only a color form of the species.

Chorotype: Anatolian [It is distributed only in E Anatolia].

**Species** *Stenurella sabinae* Rapuzzi & Sama, 2012: 664

Type loc.: Hakkari (SE Turkey); Kordestan (W Iran)

Chorotype: SW-Asiatic (Irano-Anatolian) [It is distributed only in SE Anatolia and W Iran].

**Group III (*septempunctata* species-group)**

Including *Stenurella septempunctata septempunctata*, *Stenurella septempunctata latenigra*, *Stenurella vaucheri*.

**Description:**

7-12.5 mm;

Head completely black or black except orange or brown-yellow mouth parts and vertex; Antennae completely black, reddish or orange, or orange or brown-yellow except darkened basal segments; In males, antennae extend to the elytral apex; In females, antennae as long as about three fourth or four fifth of elytra; In both sexes, 3<sup>rd</sup> the longest antennal segment, 5<sup>th</sup> and 4<sup>th</sup> follow it; 4<sup>th</sup> segment as long as about two third (0.66-0.67) - about three fourth (0.74-0.77) of 3<sup>rd</sup> segment; 4<sup>th</sup> segment as long as about nine tenth (0.88-0.94) of 5<sup>th</sup> segment; 5<sup>th</sup> segment as long as about three fourth (0.72-0.75) - four fifth (0.82-0.87) of 3<sup>rd</sup> segment; Posterior part of head (neck) with deeper transverse depression;

Pronotum completely black or almost completely orange; Pronotum as long as about three tenth (0.28-0.31) - about one third (0.34) of elytra;

Elytral coloration with or without sexual dimorphism; Elytra orange (brown-yellow) or yellow with variable black spots in both sexes, but with or without sutural black band; Elytral apex more or less obliquely truncate; Elytral width slightly more than half of elytral length (0.50-0.53);

Pygidium orange, brown-yellow or reddish;

Abdomen completely orange or brown-yellow except black last segment, or reddish except darkened laterally in males;

Legs not completely black; In both sexes, mostly orange or brown-yellow with black apex of hind femora and also top of hind tibiae and sometimes middle and hind tarsi darkened, or if legs black except all femora reddish in males, then legs completely reddish in females; First segment of metatarsus slightly shorter or slightly longer than the remaining segments together (0.97 or 1.07-1.08 times); First segment of metatarsus as long as 1.48-1.60 times of the 2-3<sup>rd</sup> segments together; Hind tibia shorter than metatarsus and as long as about three fifth (0.58-0.59) or more (up to 0.78) of metatarsus; Hind tibia slightly longer or longer than first segment of metatarsus. First segment of metatarsus as long as about three fourth (0.71) - four fifth (0.80) or about nine tenth (0.86-0.92) of hind tibia;

Punctuation of head, pronotum and elytra almost same each other: finely; dense or moderately dense; not contiguous;

Upper and underside with yellow pubescence; Pronotum without erect hairs.

Chorotype: W-Palaeartic [It distributed in Europe, Caucasus (Armenia, Georgia), European Russia, Turkey, North Africa (Morocco)].





This group includes three species-group taxa as *Stenurella septempunctata septempunctata* (Fabricius, 1792), *Stenurella septempunctata latenigra* (Pic, 1915) and *Stenurella vaucheri* (Bedel, 1900) now. The above mentioned characters for the group, therefore, are obtained from them.

**Species** *Stenurella septempunctata* Fabricius, 1792: 346 (*Leptura*)

**Subspecies** *Stenurella septempunctata septempunctata* Fabricius, 1792: 346 (*Leptura*)

*atrosuturalis* Pic, 1915a: 38 (*Leptura*)

*corcyrica* Pic, 1915e: 5 (*Strangalia*)

*dobiachi* Pic, 1916b: 4 (*Strangalia*)

*gasturica* Pic, 1915a: 38 (*Leptura*)

*holtzi* Pic, 1916b: 5 (*Strangalia*)

*montandoni* Pic, 1915e: 5 (*Strangalia*)

*notaticollis* Pic, 1915e: 5 (*Strangalia*)

*pallidicolor* Pic, 1915e: 5 (*Strangalia*)

*rubronotata* Pic, 1916b: 5 (*Strangalia*)

*semireducta* Pic, 1915e: 5 (*Strangalia*)

*suturata* Reiche & Saulcy, 1858: 22 (*Strangalia*) ["Péloponèse"]

*velebitica* Pic, 1916b: 4 (*Strangalia*)

Type loc.: Hungaria (Hungary)

It is the Western subspecies of *Stenurella septempunctata*.

Chorotype: European [It distributed in Europe (Central and South Europe (Germany and Italy) to Balkans and East Europe (up to Ukraine and European Russia)].

**Species** *Stenurella septempunctata latenigra* Pic, 1915: 5 (*Strangalia*)

*anatolica* Heyrovský, 1961a: 45 (*Strangalia*)

*roberti* Pic, 1915a: 38 (*Leptura*) ["Transsylvanie et Turquie"]

Type loc.: Asie Mineure (Turkey)

It is the Eastern subspecies of *Stenurella septempunctata*.

Chorotype: E-European [It distributed in Europe (Bulgaria, European Turkey, European Russia), Caucasus (Armenia, Georgia), Turkey].

**Species** *Stenurella vaucheri* Bedel, 1900: 336 (*Leptura*)

Type loc.: Maroc (Morocco)

It is endemic to Western Mediterranean area.

Chorotype: W-Mediterranean [It distributed only in W-Europe (Spain) and North Africa (Morocco)].

### **Subgen. nov. STENURELLOIDES**

Type sp.: *Leptura jaegeri* Hummel, 1825: 68

### **Group IV (*jaegeri* species-group)**

Including *Stenurella jaegeri*, *Stenurella novercalis*.

### **Description:**

7-11.5 mm;

Head black except brown-yellow maxillae; Antennae completely black; In males, antennae extend to the elytral apex or slightly longer than elytral apex; In females, antennae as long as about four fifth of elytra; In both sexes, 3<sup>rd</sup> the longest antennal segment, 5<sup>th</sup> and 4<sup>th</sup> follow it; 4<sup>th</sup> segment as long as about three fourth (0.74-0.76) or four fifth (0.79-0.80) of 3<sup>rd</sup> segment; 4<sup>th</sup> segment as long as about nine tenth (0.87-0.91) of 5<sup>th</sup> segment; 5<sup>th</sup> segment as long as about four fifth (0.77)- nine tenth (0.87-0.94) of 3<sup>rd</sup> segment; Posterior part of head (neck) with deeper transverse depression;

Pronotum completely black; Pronotum as long as about one fourth (0.26-0.27)-three tenth (0.28-0.30) of elytra;

Elytral coloration with sexual dimorphism; In males, brown-yellow or reddish with black apex, the suture and side edges; In females, black with brown-yellow or reddish basal one third of elytra or sometimes almost basal half of elytra; Elytral apex rounded; Elytral width slightly more than half of elytral length (0.52-0.56);

Pygidium black;

Abdomen completely black;

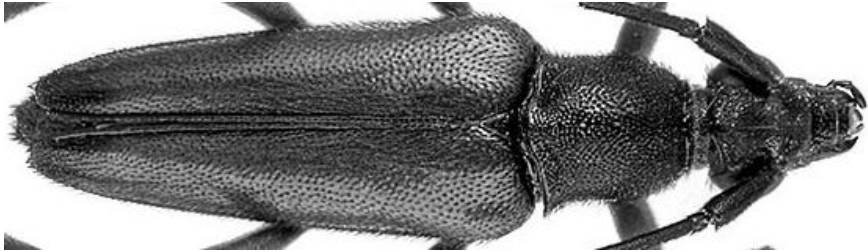
Legs not completely black; In both sexes, at least all femora brown-yellow or reddish; First segment of metatarsus slightly shorter or slightly longer than the remaining segments together (0.92 or 1.11 times); First segment of metatarsus as long as 1.33-1.59 times of the 2-3<sup>rd</sup> segments together; Hind tibia shorter than metatarsus and as long as about three fourth (0.70) or more (up to 0.90) of metatarsus; Hind tibia longer than first segment of metatarsus. First segment of metatarsus as long as about three fifth (0.56-0.61) or about two third (0.68) of hind tibia;

Punctuation of head, pronotum and elytra almost same each other: strongly; very dense; contiguous;

Upper and underside with grayish or black pubescence; Pronotum without erect hairs.

Chorotype: E-European [It distributed in Caucasus (Armenia, Azerbaijan, Georgia), Ukraine (Crimea), European Russia, Turkey, Iran].

Etymology: From the Latin suffix "oides" (meaning in English "like, resembling").



This subgenus includes two species as *Stenurella jaegeri* (Hummel, 1825) and *Stenurella novercalis* Reitter, 1901 now. The above mentioned characters for the subgenus, therefore, are obtained from them.

**Species** *Stenurella jaegeri* Hummel, 1825: 68 (*Leptura*)

*fenestrata* Reitter, 1901b: 79 (*Strangalia*)

*jekeli* Pic, 1901u: 236 (*Strangalia*)

*mingrelica* Tournier, 1872: 344 (*Strangalia*)

*oxyptera* Faldermann, 1837: 318 (*Stenura*)

Type loc.: Rossia meridionali (Southern Russia)

Chorotype: E-European [It distributed in Caucasus (Armenia, Azerbaijan, Georgia), Ukraine (Crimea), European Russia, Turkey, Iran].

**Species** *Stenurella novercalis* Reitter, 1901: 78

Type loc.: Caucasus

Chorotype: E-European [It distributed in Caucasus (Georgia), European Russia, Turkey].



**Subgen. nov. *NIGROSTENURELLA***

Type sp.: *Leptura nigra* Linnaeus, 1758: 358

**Group V (*nigra* species-group)**

Including *Stenurella nigra*.

**Description:**

5-9 mm;

Head black except yellowish maxillae; Antennae black in both sexes; In males, antennae slightly longer than elytral apex; In females, antennae as long as about four fifth of elytra; In both sexes, 3<sup>rd</sup> and 5<sup>th</sup> antennal segment as long as about the same length; 4<sup>th</sup> segment always shorter; 4<sup>th</sup> antennal segment as long as about four fifth (0.83-0.87) of 3<sup>rd</sup> or 5<sup>th</sup> segments; Posterior part of head (neck) with shallow transverse depression;

Pronotum completely black; Pronotum as long as about one third (0.31-0.35) of elytra;

Elytral coloration without sexual dimorphism; completely black; Elytral apex oblique truncate; Elytral width slightly more than half of elytral length (0.52);

Pygidium reddish with black apex;

Abdomen 4-5<sup>th</sup> sternites reddish except black apex of last segment in males; 1-5<sup>th</sup> sternites (abdomen completely) reddish except black apex of last segment in females;

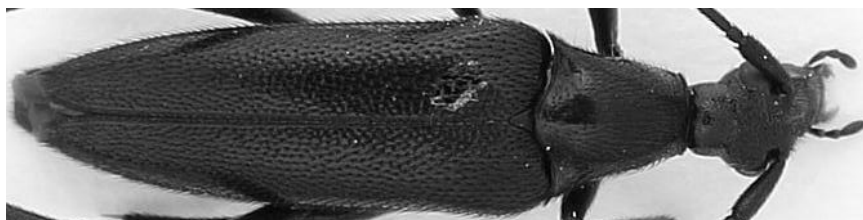
Legs completely black; First segment of metatarsus slightly longer than the remaining segments together (1.09 times); First segment of metatarsus as long as 1.52 times of the 2-3<sup>rd</sup> segments together; Hind tibia shorter than metatarsus and as long as two third (0.62-0.66) of metatarsus; Hind tibia longer than first segment of metatarsus. First segment of metatarsus as long as about three fourth (0.75)-about four fifth (0.81) of hind tibia;

Punctuation of head, pronotum and elytra almost same each other: finely; moderately dense; not contiguous;

Upperside and underside with grayish pubescence; Pronotum without erect hairs.

Chorotype: European [It distributed in almost all Europe, European Russia, Caucasus (Armenia, Azerbaijan, Georgia), Turkey, Iran].

Etymology: From the completely black upperside coloration.



This subgenus includes only one species as *Stenurella nigra* (Linnaeus, 1758) now. The above mentioned characters for the subgenus, therefore, are obtained from *Stenurella nigra*.

**Species** *Stenurella nigra* Linnaeus, 1758: 398 (*Leptura*)  
*giraudi* Pic, 1946a: 14 (*Strangalia*)  
*picea* Geoffroy, 1785: 87 (*Stenocorus*)  
*varicollis* Schaefer, 1932: 31 (*Stenura*)

Type loc.: Europa (Europe)

Chorotype: European [It distributed in almost all Europe, European Russia, Caucasus (Armenia, Azerbaijan, Georgia), Turkey, Iran].

### **Subgen. nov. CRASSOSTENURELLA**

Type sp.: *Strangalia approximans* Rosenhauer, 1856: 305

### **Group VI (*approximans* species-group)**

Including only *Stenurella approximans*.

#### **Description:**

10-15 mm;

Head black; Antennae completely black; In males, antennae slightly longer than elytral apex; In females, antennae as long as about four fifth of elytra; In both sexes, 3<sup>rd</sup> the longest antennal segment, 5<sup>th</sup> and 4<sup>th</sup> follow it; 4<sup>th</sup> segment as long as about four fifth (0.77-0.84) of 3<sup>rd</sup> segment; 4<sup>th</sup> segment as long as about nine tenth (0.90-0.91) of 5<sup>th</sup> segment; 5<sup>th</sup> segment as long as about nine tenth (0.85-0.94) of 3<sup>rd</sup> segment; Posterior part of head (neck) with shallow transverse depression;

Pronotum completely black; Pronotum as long as three tenth (0.30) of elytra;

Elytral coloration with sexual dimorphism; In males, dark brownish-red sometimes with darkened elytral apex and the suture; In females, dark brownish-red (*forma typica*), and sometimes with a very large black sutural stripe that extends elytral base to apex and clothed the most part of elytra (*ab. edmundi* Pic); Elytral apex oblique truncated; Elytral width slightly more than half of elytral length (0.54-0.55);

Pygidium black;

Abdomen black;

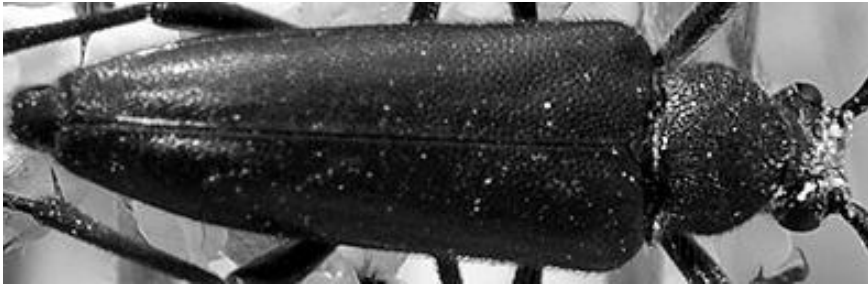
Legs completely black; First segment of metatarsus slightly shorter than the remaining segments together (0.90); First segment of metatarsus as long as 1.5 times of the 2-3<sup>rd</sup> segments together; Hind tibia shorter than metatarsus and as long as three fourth (0.75) or more (up to 0.88) of metatarsus; Hind tibia longer than first segment of metatarsus. First segment of metatarsus as long as about three fifth (0.57) or two third (0.64-0.69) of hind tibia;

Punctuation of head, pronotum and elytra almost same each other: strongly; very dense; contiguous;

Upper and underside with grayish pubescence; Pronotum without erect hairs.

Chorotype: W-Mediterranean [It is distributed only in Western Mediterranean area (Portugal, Spain and Morocco)].

Etymology: From the Latin word “crassus” (meaning in English “big”).



This subgenus includes only one species as *Stenurella approximans* (Rosenhauer, 1856) now. The above mentioned characters for the subgenus, therefore, are obtained from *Stenurella approximans*.

**Species** *Stenurella approximans* Rosenhauer, 1856: 305 (*Strangalia*)

*purpuripennis* Mulsant, 1863: 515 (*Strangalia*)

*edmundi* Pic, 1901u: 237 (*Strangalia*)

Type loc.: bei Algericas (Spain: Cadiz)

It is endemic to Western Mediterranean area.

Chorotype: W-Mediterranean [It is distributed only in Western Mediterranean area (Portugal, Spain and Morocco)].

### **Subgen. nov. *IBEROSTENURELLA***

Type sp.: *Strangalia hybridula* Reitter, 1902: 188

### **Group VII (*hybridula* species-group)**

Including only *Stenurella hybridula*.

### **Description:**

9-12 mm;

Head black except yellowish maxillae; Antennae yellowish-brown with darkened basal segments; In males, antennae longer than elytral apex; In females, antennae as long as about four fifth of elytra; In both sexes, 3<sup>rd</sup> and 5<sup>th</sup> antennal segment as long as the same length; 4<sup>th</sup> segment always shorter; 4<sup>th</sup> antennal segment as long as about four fifth (0.80-0.83) of 3<sup>rd</sup> or 5<sup>th</sup> segments; Posterior part of head (neck) with shallow transverse depression;

Pronotum completely black; Pronotum as long as about three tenth (0.27-0.33) of elytra;

Elytral coloration without sexual dimorphism; Elytra yellowish-brown with suture and lateral margins black, apex darkened; Elytral apex more or less rounded; Elytral width slightly more than half of elytral length (0.52-0.56);

Pygidium black;

Abdomen black in males, red except black 1<sup>st</sup> tergite and apex of last tergite in females;

Legs predominantly black sometimes with partly more or less yellowish-brown tibiae; First segment of metatarsus longer than the remaining segments together (1.25 times); First segment of metatarsus as long as almost 2 times (1.93) of the 2-3rd segments together; Hind tibia shorter than metatarsus and as long as

three fourth (0.75) or more (up to 0.88) of metatarsus; Hind tibia longer than first segment of metatarsus. First segment of metatarsus as long as about three fifth (0.57)-two third (0.67-0.70) of hind tibia;

Punctuation of head, pronotum and elytra almost same each other: finely; dense; not contiguous;

Upper and underside with yellowish pubescence; Pronotum with erect hairs.

Chorotype: Iberian endemic [It is distributed only in Iberian Peninsula (Portugal, Spain)].

Etymology: From the distribution area, Iberian Peninsula.



This subgenus includes only one species as *Stenurella hybridula* (Reitter, 1902) now. The above mentioned characters for the subgenus, therefore, are obtained from *Stenurella hybridula*.

**Species** *Stenurella hybridula* Reitter, 1902: 188 (*Strangalia*)  
*atriventris* Pic, 1905a: 8 (*Leptura*) [DA]  
*atronotata* Pic, 1918d: 5

Type loc.: Asturien: Albas (Spain); Sierra do Gerez (Portugal)

It is endemic to Iberian Peninsula.

Chorotype: Iberian endemic [It is distributed only in Iberian Peninsula (Portugal, Spain)].

**A necessary explanation:** Löbl & Smetana (2010) gave the species as follows:

*hybridula* Reitter, 1901h: 188 (*Strangalia*) E: PT SP  
*atriventris* Pic, 1905a: 8 (*Leptura*) [DA]  
*atronotata* Pic, 1918d: 5

And also they gave as the mentioned reference:

Reitter E. 1901h: Vierzehnter Beitrag zur Coleopteren-Fauna von Europa und den angrenzenden Ländern. Wiener Entomologische Zeitung 20: 200-202.

However, the publication does not include the description of *Strangalia hybridula*. The species was described by Reitter (1902). The reference that missing in the Catalog, is presented as follows:

Reitter E. 1902: Neue Coleopteren aus Europa und den angrenzenden Ländern. Deutsche Entomologische Zeitschrift 1901 [1901-1902]: 187-188.

So, *Stenurella hybridula* should be attributed to Reitter (1902: 188) as correct.

**Consequently, the genus *Stenurella* Villiers, 1974 can be arranged in accordance with Löbl & Smetana (2010) as follows:**

**genus *Stenurella* Villiers, 1974:** 217 type species *Leptura melanura* Linnaeus, 1758

**subgenus *Crassostenurella* Özdikmen, 2013:** 526 type species *Strangalia approximans* Rosenhauer, 1856

*approximans* Rosenhauer, 1856: 305 (*Strangalia*) E: PT SP N: MO

*purpuripennis* Mulsant, 1863: 515 (*Strangalia*)

*edmundi* Pic, 1901u: 237 (*Strangalia*)

**subgenus *Iberostenurella* Özdikmen, 2013:** 527 type species *Strangalia hybridula* Reitter, 1902

*hybridula* Reitter, 1902e: 188 (*Strangalia*) E: PT SP

*atriventris* Pic, 1905a: 8 (*Leptura*) [DA]

*atronotata* Pic, 1918d: 5

**subgenus *Nigrostenurella* Özdikmen, 2013:** 525 type species *Leptura nigra* Linnaeus, 1758

*nigra* Linnaeus, 1758: 398 (*Leptura*) E: AB AL AR AU BE BH BU BY CR CT CZ DE EN FR GB GE GG GR HU IR IT LA LS LT LU MC MD NL NR NT PT RO

SK SL SP ST SV SZ UK YU A: IN TR

*giraudi* Pic, 1946a: 14 (*Strangalia*)

*picea* Geoffroy, 1785: 87 (*Stenocorus*)

*varicollis* Schaefer, 1932: 31 (*Stenura*)

**subgenus *Priscostenurella* Özdikmen, 2013:** 516 type species *Leptura bifasciata* O. F. Müller, 1776

*bifasciata bifasciata* O. F. Müller, 1776: 93 (*Leptura*) E: AB AL AR AU BE BH BU BY CR CT CZ EN FR GE GG GR HU IT LA LS LT LU MC MD NL NT PL PT

RO SK SL SP ST SZ TR UK YU A: ES IN IQ KZ TR WS XIN

*albarracina* Wagner, 1927a: 45 (*Leptura*)

*cruciata* Olivier, 1795: 7 (*Leptura*)

*immaculata* Pic, 1889b: 55 (*Strangalia*)

*nigriventris* Pic, 1891b: 15 (*Strangalia*)

*sedakovii* Mannerheim, 1852b: 307 (*Stenura*)

*ustulata* Laicharting, 1784: 157 [HN] (*Leptura*)

*bifasciata intermedia* Holzschuh, 2006: 219 E: AL BU GR MC

*bifasciata lanceolata* Mulsant & Rey, 1863: 177 (*Strangalia*) E: FR SP

*bifasciata limbiventris* Reitter, 1898a: 21 (*Strangalia*) E: GG A: TR

*bifasciata nigrosuturalis* Reitter, 1895a: 88 (*Strangalia*) A: LE SY TR

*bifasciata safronovi* Danilevsky, 2011: 2 A: TR

*ferruginipes* (Pic, 1895: 76) A: TR

*solaris* Rapuzzi & Sama, 2012: 665 **syn. nov.**

*sabinae* Rapuzzi & Sama, 2012: 664 A: IN TR

*septempunctata septempunctata* Fabricius, 1792b: 346 (*Leptura*) E: AL AU BH BU CR CZ GE GR HU IT MC MD PL RO SK SL ST SZ UK YU

*atrosuturalis* Pic, 1915a: 38 (*Leptura*)

*corcyrica* Pic, 1915e: 5 (*Strangalia*)

*dobiachi* Pic, 1916b: 4 (*Strangalia*)

*gasturica* Pic, 1915a: 38 (*Leptura*)

*holtzi* Pic, 1916b: 5 (*Strangalia*)

*montandoni* Pic, 1915e: 5 (*Strangalia*)

*notaticollis* Pic, 1915e: 5 (*Strangalia*)

*pallidicolor* Pic, 1915e: 5 (*Strangalia*)

- rubronotata* Pic, 1916b: 5 (*Strangalia*)  
*semireducta* Pic, 1915e: 5 (*Strangalia*)  
*suturata* Reiche & Saulcy, 1858: 22 (*Strangalia*) [“Péloponèse”]  
*velebitica* Pic, 1916b: 4 (*Strangalia*)  
*septempunctata latenigra* Pic, 1915: 5 (*Strangalia*) **E:** AR BU GG **A:** TR  
*anatolica* Heyrovský, 1961a: 45 (*Strangalia*)  
*roberti* Pic, 1915a: 38 (*Leptura*) [“Transsylvanie et Turquie”]  
*vaucheri* Bedel, 1900: 336 (*Leptura*) **E:** SP **N:** MO  
**subgenus** *Stenurella* Villiers, 1974: 217 type species *Leptura melanura* Linnaeus, 1758  
*melanura* Linnaeus, 1758: 397 (*Leptura*) **E:** AB AL AR AU BE BH BU BY CR CT CZ DE EN FI FR GB GE GG GR HU IR IT LA LS LT LU MC MD NL NT NR PL PT RO SK SL SP ST SV SZ YU UK MD **A:** ES FE JA KZ MG TR WS XIN  
*diversiventris* Dufour, 1843: 103 (*Strangalia*)  
*georgiana* Pic, 1891g: 63 (*Strangalia*)  
*latesuturata* Pic, 1891g: 63 (*Strangalia*)  
*melanurella* Reitter, 1901b: 78 (*Strangalia*)  
*rubellata* Reitter, 1901b: 77 (*Strangalia*)  
*semicrassa* Pic, 1901n: 58 (*Leptura*)  
*similis* Herbst, 1784: 101 (*Leptura*)  
*suturanigra* DeGeer, 1775: 138 (*Leptura*)  
*pamphylliae* Rapuzzi & Sama, 2009: 182 **A:** TR  
*samai samai* Rapuzzi, 1995: 617 **E:** BU GR TR **A:** TR  
*samai sennii* Sama, 2002: 40 **E:** FR GR IT SZ  
*zehrae* Özdikmen et al., 2012: 18 **A:** TR  
**subgenus** *Stenurelloides* Özdikmen, 2013: 523 type species *Leptura jaegeri* Hummel, 1825  
*jaegeri* Hummel, 1825: 68 (*Leptura*) **E:** AB AR GG ST UK **A:** TR  
*fenestrata* Reitter, 1901b: 79 (*Strangalia*)  
*jekeli* Pic, 1901u: 236 (*Strangalia*)  
*mingrelica* Tournier, 1872: 344 (*Strangalia*)  
*oxyptera* Faldermann, 1837: 318 (*Stenura*)  
*novercalis* Reitter, 1901b: 78 **E:** GG ST **A:** TR

**Notes:** The taxon, *Strangalia lindbergi* Villiers, 1943: 233, that sometimes is placed in the genus *Stenurella*, definitely belongs to the genus *Nustera* Villiers, 1974.

#### LITERATURE CITED

- Adlbauer, K.** 1988. Neues zur Taxonomie und Faunistik der Bockkäferfauna der Türkei (Coleoptera, Cerambycidae). Entomofauna, 9 (12): 257-297.
- Bedel, L.** 1900. Descriptions de deux coléoptères nouveaux du Nord de l’Afrique. Bulletin de la Société Entomologique de France, 1900: 335-337.
- Danilevsky, M.** 2011. New subspecies of *Stenurella bifasciata* (Müller, 1776) (Coleoptera, Cerambycidae) from South West Turkey. Munis Entomology & Zoology, 6 (1): 1-5.
- Fabricius, J. C.** 1792. Entomologia Systematica emendata et Aucta. Secundum classes, ordines, genera, species. Adjectus synonymibus, locis, observationibus, descriptionibus. Tome I: p. 346.
- Holzschuh, C.** 2006. Beschreibung von 51 neuen Bockkäfern aus der palaearktischen und orientalischen Region, vorwiegend aus Borneo und China (Coleoptera, Cerambycidae). Entomologica Basiliensia et Collectionis Frey, 28: 205-276.

- Hummel, A. D.** 1825. *Novae Species Variorum. Ess. Entomol.*, 4: 58-71.
- Linnaeus, C.** 1758. *Systema Naturae per regna tria naturae, secundum classes, ordines, genera, species, cum characteribus, differentiis, synonymiis, locis. Tomus I. Editio decima, reformata. Holmiae. Impensis Direct. Laurentii Salvii*, iv + 824 + [1] pp.
- Löbl, I. & Smetana A.** (ed.) 2010. *Catalogue of Palaearctic Coleoptera, Vol. 6. Chrysomeloidea. Stenstrup. Apollo Books*, 924 pp.
- Mulsant, E. & Rey, C.** 1863. *Longicornes nouveaux ou peu connus. Annales de la Société Linnéenne de Lyon*, (2) 10: 144-184.
- Müller, O. F.** 1776. *Zoologiae Danicae prodromus, seu animalium Daniae et Norvegiae indigenarum characteres, nomina et synonyma imprimis popularium. Hafniae. Hallagerii*, xxxii + 282 pp.
- Özdikmen, H., Mercan, N. & Cihan, N.** 2012. A new species of the genus *Stenurella* Villiers, 1974 from Turkey (Coleoptera: Cerambycidae: Lepturinae). *Munis Entomology & Zoology*, 7 (1): 18-21.
- Pic, M.** 1895. Longicornes de la collection H. Tournier. *L'Échange, Revue Linnéenne*, 11 (127): 75-78.
- Rapuzzi, P.** 1995. Descrizione di *Stenurella samai* n. sp. di Turchia europea e di *Axinopalpis gracilis christinae* n. ssp. di Grecia (Coleoptera, Cerambycidae). *Lambillionea*, 95 (4): 617-619.
- Rapuzzi, P. & Sama, G.** 2009. Description of new Cerambycidae from Greece, Turkey, northern Syria and China (Insecta Coleoptera Cerambycidae). *Quaderno di Studi e Notizie di Storia Naturale della Romagna*, 29: 181-188.
- Rapuzzi, P. & Sama, G.** 2012. New taxa and new records of Longhorn-Beetles from Eastern Mediterranean Region (Coleoptera: Cerambycidae). *Munis Entomology & Zoology*, 7 (2): 663-690.
- Reiche, L. & Saulcy, F. De.** 1858. Coléoptères nouveaux ou peu connu recueilli par M.de Saulcy dans son voyage en Grèce, Palestine et autour de la Mer Morte. *Ann.Soc.ent.Fr.*, 3 (6): 306-318.
- Reitter, E.** 1895. Beschreibung neuer oder wenig bekannter Coleopteren aus der Umgebung von Akbes in Syrien. *Wiener Entomologische Zeitung*, 14: 79-88.
- Reitter, E.** 1898. Sechzehnter Beitrag zur Coleopteren-Fauna des russischen Reiches. *Wiener Entomologische Zeitung*, 17: 17-22.
- Reitter, E.** 1901. Uebersicht der Arten der Coleopteren-Gattung *Strangalia* Serv. aus der Verwandtschaft der *St. melanura* L. und *bifasciata* Müll.. *Wiener Entomologische Zeitung*, 20: 77-80.
- Reitter, E.** 1902. Neue Coleopteren aus Europa und den angrenzenden Ländern. *Deutsche Entomologische Zeitschrift*, 1901 [1901-1902]: 187-188.
- Rosenhauer, W. G.** 1856. *Thiere Andalusiens nach dem resultate einer Reise zusammengestellt, nebst den Beschreibungen von 249 neuen oder bis jetzt unbeschriebenen Gattungen und Arten. Erlangen: Theodor Blaesing, VIII + 429 pp.*
- Sama, G.** 2002. *Atlas of the Cerambycidae of Europe and the Mediterranean Area, Volume I, Kabourek, Zlin*, 173 pp.
- Villiers, A.** 1946. Coléoptères Cérambycides de l'Afrique du Nord.- Faune de l'Empire français. 5. Paris: 153 pp.
- Villiers, A.** 1974. Une nouvelle nomenclature des lepturines de France (Col. Cerambycidae). *L'Entomologiste*, 30: 207-217.